

175 YEARS OF PRESBYTERIAN MISSION
2011 ANNUAL REPORT



General Assembly Mission Council



CONTENTS

- 1 Message from Linda Valentine and Michael Kruse
- 2 Message from Roger Dermody and Mission Highlights
- 4 Compassion, Peace and Justice
- 6 Evangelism and Church Growth
- 8 Racial Ethnic & Women's Ministries/PW
- 10 Theology, Worship and Education
- 12 Office of Vocation
- 14 World Mission
- 16 Communications and Funds Development
- 18 Shared Services
- 20 Executive Director's Office
- 22 General Assembly Mission Council Organizational Chart
- 23 General Assembly Mission Council Members
- 24 Overview of General Assembly Agencies
- 26 Financial Data

On the cover

A Senegalese woman tends a community garden, part of a local cereal bank supported by the Presbyterian Hunger Program. Photo courtesy of the Presbyterian Hunger Program.

PC(USA) mission co-worker Dr. Les Morgan followed God's call to serve in Bangladesh.



MESSAGE FROM LINDA VALENTINE AND MICHAEL KRUSE

“But you will receive power when the Holy Spirit has come upon you; and you will be my witnesses in Jerusalem, in all Judea and Samaria, and to the ends of the earth.” (Acts 1:8)



The spirit of the Great Commission—coupled with the charge by the 2008 and 2010 General Assemblies to “Grow Christ’s Church Deep and Wide”—renewed the General Assembly Mission Council in 2011 in our call to inspire, equip, and connect Presbyterians to join in God’s mission for the transformation of the world.

In 2011, hundreds of Presbyterians in scores of congregations used our new *Engage* resource designed to connect evangelism with disciple making. Dozens of congregations utilized the New Beginnings assessment to help them envision a new future. A new curriculum was launched, built upon the award-winning lectionary resource *Feasting on the Word*. Dozens of pastors found mentoring and support in their first calls through the Company of New Pastors. Emerging racial ethnic and women leaders came together in leadership institutes for learning, networking, and encouragement. Young adult interns learned and worked in the Office of Public Witness at the intersection of justice and evangelism. New immigrant fellowships and racial ethnic congregations and their presbyteries were resourced and encouraged toward our becoming a more welcoming and inclusive denomination.

As we prepare to celebrate the 175th anniversary of Presbyterian World Mission in 2012, we rejoice in those Young Adult Volunteers and mission workers who answered God’s call in 2011 to serve Christ’s church around the world. Hundreds of Presbyterians supported them through 40 country-related mission networks. New seminary graduates were matched with small, underserved congregations in the *For Such a Time as This* pastoral residency program. Military chaplains embodied Christ’s presence by ministering to military personnel and their families. Fifteen hundred Presbyterians came together at Big Tent, where they were inspired, equipped, and connected in mission and ministry.

Individuals, congregations, and presbyteries responded to dozens of disasters through Presbyterian Disaster Assistance. Presbyterians generously responded to the devastating earthquake in Haiti with gifts totaling more than \$11 million, enabling both immediate relief and long-term recovery and development.

Because we are mindful of the dramatic changes and challenges facing today’s church, we have been in the midst of many conversations about the church’s future. And so we continue, as we did in 2011, to join with Presbyterians and our many partners to ask the hard questions, but most of all to serve Christ with joy, giving thanks to God for the generous gifts and talents of individuals, congregations, and mid councils, which significantly contribute to the life and health of the PC(USA).

Linda B. Valentine

Linda B. Valentine, Executive Director
General Assembly Mission Council

Michael W. Kruse

Michael W. Kruse, Chair
General Assembly Mission Council

MESSAGE FROM ROGER DERMODY



In 2011 tornadoes wreaked havoc across communities throughout this country, leaving massive damage in Alabama, Missouri, Georgia, Tennessee, and other states, in some places wiping out entire towns. These storms radically changed the lives of all those impacted.

It's obvious that our denomination is likewise going through a series of storms that threatens to radically change the lives of all its people.

In the aftermath of the tornadoes, Presbyterians were there, aiding the victims, serving, sharing, reaching out, and providing hope. I pray that in the midst of the storms we currently face, Presbyterians will continue to serve, share, reach out, and provide hope, as we have in international mission the past 175 years.

Our history as Presbyterians is a rich and vibrant one. Presbyterians have always been at the forefront of missional activity. The fruit of our mission and ministry efforts can be seen literally all over the world. There is much for which we can praise God. There is much that we have done. There is much that we are still doing. And I urge you to read about some of this work, from four of my colleagues. I firmly believe that there is much we can—and with God's help—*will* still do to the glory of God, by the power of the Holy Spirit, in the name of Jesus Christ. It seems to me that it's often in the midst of and after the biggest storms that God's people most clearly serve, share, reach out, and reflect the hope of Christ to a broken world.



Roger Dermody, Deputy Executive Director for Mission
General Assembly Mission Council



Courtesy of World Mission



Paul Jeffrey/ACT Alliance

Left: Sook Hee Bae (left) prays at the baptism of Ms. Suh 10 years after Sook Hee met her at a domestic violence shelter in Seoul, Korea. Right: Haitian earthquake survivor Alexis Marie Carmel has moved into a new house in Léogâne that was built with assistance from Presbyterian Disaster Assistance in cooperation with ACT Alliance.

MISSION HIGHLIGHTS



The Presbyterian Hunger Program works with RELUFA, a network of churches and nonprofits. Vulnerable communities in semi-Saharan northern Cameroon are thriving through RELUFA's Food Sovereignty program, which allows

farmers in 42 villages to ward off speculators at harvest time and stock their crops to eat later or sell when prices are higher. This program, coupled with an innovative tuition-assistance arrangement for children, has been highlighted as a pilot for rural development throughout the country.

Ruth Farrell, Coordinator
Presbyterian Hunger Program



Church Growth Ministries works in partnership with pastors, committees, and mid councils to provide training, materials, and consultation in planting and growing new congregations. One of their initiatives is New Beginnings,

an assessment and discernment process that provides congregations a critical and in-depth look at themselves while guiding them into a future both true to their historical commitments and relevant to the 21st century.

Philip Lotspeich, Coordinator
Church Growth Ministries



The Office of Public Witness (OPW) advocates for the social justice perspectives and policies approved by the Presbyterian Church (U.S.A.) General Assembly. This valuable denominational

resource is involved in ecumenical and interfaith collaboration on political issues and serves as a prophetic voice concerning proposed legislation affecting how we live together in God's world. The OPW's central advocacy, grounded in Scripture, brings the heart of the gospel to the nation's capital and equips Presbyterians for advocacy in their own contexts.

J. Herbert Nelson II, Director
Office of Public Witness



In collaboration with Presbyterian Publishing Corporation, Congregational Ministries Publishing launched a new curriculum in 2011 called *Feasting on the Word: Teaching the Revised Common Lectionary*. Based on

the award-winning commentary, this ecumenical, downloadable resource provides materials for all ages and connects worship and faith formation like no lectionary curriculum ever has.

Clare Lewis, Publisher
Congregational Ministries Publishing

COMPASSION, PEACE AND JUSTICE

www.pcusa.org/cpj

Sara Lisherness, Director



The ministries of Compassion, Peace and Justice focus on rebuilding communities after a tornado or hurricane wipes out an entire city, eliminating hunger by educating and equipping individuals and congregations to address the issues that perpetuate hunger, and helping people help themselves with long-term solutions to poverty and pressing community problems. These ministries, in very real and tangible ways, respond to God's call through the prophet Isaiah that we be "the repairer of the breach, the restorer of streets to live in" (58:12)—making God's community livable for all.

Ministries of Compassion, Peace and Justice

James N. Jarvie Commonweal Service
Presbyterian Disaster Assistance
Presbyterian Hunger Program
Presbyterian Ministry at the United Nations
Presbyterian Office of Public Witness
Presbyterian Peacemaking Program
Self-Development of People

Social Witness Ministries

The Advisory Committee on Social Witness Policy
Child Advocacy
Environmental Ministries
Mission Responsibility Through Investment
Presbyterian Health, Education and Welfare Association

HAITI: REACHING FARTHER THROUGH PARTNERSHIPS

In times of disaster, the most marginalized are often the last to get help. But by working with in-country and local partners in Haiti, the Presbyterian Hunger Program, Presbyterian Disaster Assistance, and the Self-Development of People programs are able to reach those who would otherwise be overlooked. These programs are making a difference through efforts such as helping disabled business owners in the Port-au-Prince area,



Jessica Reid

repairing and improving a damaged hospital in the rural town of Léogâne with the Medical Benevolence Foundation, and through an eco-villages project with the Farmers Movement of Papaye, providing livelihoods, homes, and a community for those displaced by the 2010 earthquake.

Lausore Manel Kookonaté and his family, in front of their newly constructed home. Kookonaté lives and works in the eco-villages, learning ways to improve his gardens so they also provide a livelihood for his family.

CAUGHT RED-HANDED

We've all seen horrific images of children victimized by war, including young children forced to serve as soldiers or become sex slaves or unwilling servants to older combatants. The Red Hand Campaign, promoted by the Presbyterian Peacemaking Program, the Office of Child Advocacy, and the Presbyterian Ministry at the United Nations, is an international initiative designed to create awareness about the use of children as soldiers and to have every country in the world ratify the U.N.'s 2002

Optional Protocol on the involvement of children in armed conflict, which forbids the practice. Two-thirds of the world's countries have ratified it, but 60 still have not. By the end of 2011, the Presbyterian Ministry at the U.N. had delivered thousands of red hands to the U.N. offices of those countries yet to ratify the protocol.

Presbyterians of all ages create red paper handprints customized with messages of support for the protocol.



Courtesy of the Red Hand Campaign

EVANGELISM AND CHURCH GROWTH

www.pcusa.org/ecg

Eric Hoey, Director



Evangelism and Church Growth ministries support the Church's desire to make disciples for the transformation of the world. We do this by helping congregations and mid councils partner with

the Holy Spirit to accomplish God's redemptive plan through faith in Jesus Christ. Our vision is to help the PC(USA) become a turnaround denomination, by igniting a passion for Jesus, inspiring the church to be the church, and equipping leaders for 21st century mission and ministry. We are gratified that God is working through Evangelism and Church Growth ministries to impact the lives of congregations, presbyteries, church leaders, youth and the people who work with them, young adults, college students, and our PC(USA) camp and conference center leaders.

Evangelism Ministries

Camp and Conference Ministry
Collegiate Ministries
Evangelism
Ministries with Youth

Church Growth Ministries

Congregational Transformation
Mission Program Grants
New Church Development

FRESH AND INNOVATIVE WITNESS



Courtesy of C. N. Jenkins Memorial Presbyterian Church

Engage, a new evangelism resource that connects faith sharing with disciple making, made a powerful impact on a Charlotte congregation. In 2011 session leaders began to pray and read Scripture together. Their faith stories came alive, touching 94 people who made professions of faith, 63 becoming new members. The congregation began to engage in new mission and service opportunities in their community. After getting a free hair cut, shave, and clothing, one homeless man told them, "You have allowed me to go home with dignity." At C. N. Jenkins Memorial Presbyterian Church, the ripple effect of *Engage*—connecting people to God and each other—has been profound.

Engage helped a Charlotte congregation touch people in their community with God's love. Volunteer barbers, who gave more than 50 free haircuts in two hours at the Impact Charlotte event, say some of the children were "so excited by how they looked that they didn't want to leave the room."



Gary Walts

NEW WORSHIPPING COMMUNITY FEEDS THE HUNGRY

Starting New Churches and *New Beginnings*, Church Growth ministry resources, helped a Syracuse congregation get “unstuck.” Throughout 2011 leaders at First Presbyterian Church United struggled to keep their doors open. They prayed, asking God to guide them through Scripture. Seeing new mission opportunities, they started a breakfast for kids who were coming to Sunday school hungry. Mainly adults, including people who were homeless, showed up. Their logical next step was to open a food pantry. Before long, the congregation

came to discern God calling them to form a new worshipping community dedicated to feeding the hungry, this new fellowship continuing as an instrument of God’s redemption in its neighborhood.

Church Growth resources helped the people of First Presbyterian discover and embrace the blessing God was working through them in their community. “We don’t want to be church just to keep the buildings and care only for ourselves.”

RACIAL ETHNIC & WOMEN'S MINISTRIES/PW

www.pcusa.org/raciaethnic

Rhashell Hunter, Director



In Racial Ethnic & Women's Ministries/Presbyterian Women, we engage the church in its mission to become more diverse and inclusive of racial, ethnic, cultural, and language groups, and we equip women

for leadership in all ministries of the church.

The newest growth in the church is in racial ethnic and new immigrant worshiping communities. In the Office of Cross Cultural Ministries we assist European American congregations to better reflect the diversity of their surrounding communities. We work in the areas of Women's Leadership Development and resource young women's ministries.

With Presbyterian Women Inc., we work on behalf of the church for women's empowerment and racial justice, for in God's beloved community there are no arbitrary distinctions; we are all one in Christ Jesus.

Racial Ethnic and Cross Cultural Ministries

African American Congregational Support
African Emerging Ministries
Asian Congregational Support
Cross Cultural Ministries
Hispanic/Latino-a Congregational Support
including Brazilian/Portuguese Congregational Support
Korean Emerging Ministries
including Korean English Ministries (EM)
Multicultural Congregational Support
New Immigrant and Emerging Ministries
including Middle Eastern Ministries
Native American Congregational Support
Racial Ethnic Leadership Development
including Racial Ethnic Schools and Colleges

Women's Leadership Development and Justice Ministries

Gender and Racial Justice
Women's Leadership Development
Young Women's Leadership Development
including NNPCW and REYWT

Presbyterian Women Inc.

CREATING DIVERSITY IN LEADERSHIP

Flo Watkins knows what it means to be a trailblazer. She's the first woman and first African American to serve as a pastor at her Charlotte, N.C., church. But she hadn't considered leadership at higher levels of the PC(USA) until receiving an invitation to participate in the African American Executive Leadership Seminar last fall. It



Kim Hayes Watkins

is racial ethnic leaders like Flo that Racial Ethnic & Women's Ministries is working to identify and equip to serve in executive and head of staff positions, as well as in other leadership roles in the church. Through ministries like the RE&WM/PW Leadership Institutes, racial ethnic Presbyterians are networking, strengthening their management skills, discovering new spiritual disciplines, and discerning their gifts at all levels of the PC(USA).

Attendees made connections at the African American Executive Leadership Seminar in August 2011.

PREPARING YOUNG WOMEN FOR LEADERSHIP



Mark Koenig

One of the annual Young Women's Leadership Development events is the United Nations Commission on the Status of Women. Women learn about the legislative process and engage with diverse women from different socio-economic backgrounds from all over the

world in an effort to impact change and make life better for all women.

A group of Racial Ethnic Young Women Together visit the United Nations in New York.

THEOLOGY, WORSHIP AND EDUCATION

www.pcusa.org/theology

Charles B. (“Chip”) Hardwick, Director



Theology, Worship and Education (TWE) ministries support Presbyterians’ commitment to join God’s mission in the world by working in three distinct areas: Congregational

Ministries Publishing and the Offices of Theological Education and of Theology and Worship. Our ministries prepare clergy and all Christians to wrestle with issues of theology, discipleship, and worship, in congregational and seminary contexts. TWE initiatives inspire, equip, and connect the church to think, pray, and live the faith and are animated by the conviction that what we believe shapes how we pray, and how we pray shapes how we live.

Congregational Ministries Publishing

Feasting on the Word (ecumenical curriculum)
Korean, Spanish, and Braille language resources
We Believe (denominational curriculum for all ages)

Theological Education

Committee on Theological Education
Seminary Support Network
Theological Education Fund

Theology and Worship

Communities of Theological Friendship
Company of New Pastors
Interfaith Relations
Invitation to the Word
Worship Resources

PREPARED FOR A LIFETIME OF MINISTRY

The Company of New Pastors (CNP), a ministry of the Office of Theology and Worship, has touched lives in more than 1,300 congregations. Each year 70 future pastoral leaders in their middler year of seminary covenant to follow classical spiritual practices in groups for five years. Disciplines of prayer, reading Scripture, and studying the confessions with mentors connect these new leaders to God, the world, and each other, while nurturing a strong foundation for ministering in a complex world. Of the nearly 400 program graduates, more than 99 percent remain committed to full-time ministry, making CNP a remarkably successful and cost-effective (\$7,500 per member over five years) pastoral vocation transition into ministry program.

Students in the Company of New Pastors from Columbia Theological Seminary celebrate both their daily practice of prayer and Scripture, and their graduation, as they prepare to receive their first call to ministry.



Courtesy of Katie Archibald-Woodward

PARTNERS IN MINISTERIAL FORMATION

The ministry of Theological Education provides the only denomination-wide financial support to all Presbyterian Church (U.S.A.) seminaries, including those related to the church by covenant agreement. In 2011 mid councils, individuals, and more than 1,400 congregations gave nearly \$1.4 million to the Theological Education Fund (TEF). For example, Princeton used its TEF-designated funds to pay for field education stipends, making it possible for 300 students to serve in either small urban and rural congregations or specialized social justice and campus ministry sites. These field sites benefit too as

students gain invaluable practical ministry experience supporting God's renewal of the church's life and mission. Theological Education works for seminaries and churches together, for generations to come.

Austin Presbyterian Theological Seminary student William West (Pflugerville, Texas) with homiletics professor Kristin Emery Saldine. Churches and seminaries benefit from these kinds of mentoring relationships, as students experience some of the riches of ministry that support God's renewal of the Church's life and mission.



Jody Horton, courtesy of Austin Presbyterian Theological Seminary

OFFICE OF VOCATION

www.pcusa.org/vocation

Marcia Myers, Director



Today's church leaders are called to discern God's will, explore new paths, and take risks to seize new opportunities. The focus of the work of the Office of Vocation is to support the development

of leaders for our changing church—leaders who effectively love and lead existing congregations into new mission in their neighborhoods, and leaders who birth new worshiping communities reaching new Christians in 1,001 new ways. In 2011 we planted the seeds for Transformational Leadership Debt Assistance, a new forgivable loan program for risk-taking pastors of small, growing communities of faith. We commissioned 10 new pastoral residents through the For Such a Time as This program and continue to work with our seminaries and presbyteries on the complex task of ministerial formation and development. Now is the time to ask, why not? Why not explore possibilities for new forms of ministry, and support passionate and creative leaders for times such as these? We're doing just that.

Vocation Programs

Affiliated Specialized Ministry Organizations
Christian Educator Certification/Christian Vocation
Church Leadership Connection
Commissioned Ruling Elders
Financial Aid for Studies
For Such a Time as This Pastoral Residency Program
Ministry Support/Committee on Ministry
PC(USA) Leadership Trends
Preparation for Ministry/Ordination Exams
Presbyterian Council for Chaplains
and Military Personnel

Racial Ethnic Seminarians' and
Healthy Ministry Conferences

HEALING THE WOUNDS OF WAR



Army photo, courtesy of Cpl (CO) Barbara Sherer

Helping returning soldiers and their families heal from the stresses of wartime deployments is a vital ministry. The Office of Vocation—through the Presbyterian Council for Chaplains and Military Personnel—supports the work of Presbyterian military chaplains while equipping congregations to provide spiritual and practical resources to military chaplains and personnel and their families. Simple loving gestures by churches—such as letters from Sunday school classes or distributing CDs with beloved hymns of the church to active duty military chaplains—make a tremendous difference in the lives of those serving in all branches of the military.

Army chaplain Barbara Sherer serves Communion in Iraq.



Courtesy of Jason Clapper

MATCHES MADE IN HEAVEN

For Such a Time as This is an innovative program focused on spiritual, vocational, and congregational transformation. Says go-getter Michael Wood, a pastoral resident in Pontotoc, Miss., “*For Such a Time as This* is something that we need to support, or we need to quit complaining about the decline in membership, because this is something we can actually do to change that.” The program pairs small, underserved congregations in rural,

small town, and urban settings with recent seminary graduates in two-year pastoral calls. Through *For Such a Time as This*, congregations are finding renewal and growth in expanding witness in their communities.

The Rev. Jason Clapper, a member of the For Such a Time as This Class of 2011, with his family, following worship at Lavonia (Ga.) Presbyterian Church

WORLD MISSION

www.pcusa.org/worldmission

Hunter Farrell, Director



As we celebrate the 175 years of Presbyterian world mission, our vision is to continue this faithful mission heritage. With thanks and pride, we honor Presbyterian missionaries who planted churches, built

hospitals, and started schools on every continent. These seeds have often grown into self-sustaining churches and institutions now led by local Christians. More than 94 million Christians around the world have come to faith through denominations founded or cofounded by Presbyterian Church (U.S.A.) mission workers. Today World Mission sends out almost 200 mission co-workers serving in over 50 countries. Along with global partners and U.S. Presbyterians, we are tackling three critical global issues: partnering with communities to lift people out of desperate poverty, empowering the global church to reach more people with Christ's message of love, and facilitating reconciliation in troubled places.

Mission Personnel

Mission Partners and Programs (as of May 2012)

Area Offices

Africa
Asia and the Pacific
Latin America and the Caribbean
Middle East, Central Asia, and Europe

Program Offices

International Evangelism
International Health and Development
Jinishian Memorial Program

Global Discipleship

Equipping for Mission Involvement
Mission Personnel Recruitment and Relations
Young Adult and National Volunteers

BUILDING PEACE IN NORTHERN IRELAND

Doug Baker works for reconciliation in Northern Ireland, alongside church leaders and through the many Young Adult Volunteers (YAVs) he mentors. One way YAVs work for peace is by arranging joint activities that include youth from unionist communities (those wanting to remain part of the United Kingdom) and from nationalist communities (those wanting to unite



Courtesy of Doug Baker

with the Republic of Ireland). One volunteer has helped boys from both communities come together weekly to play soccer. The games don't pit the unionists against the nationalists; teams are selected so that boys from both communities play on the same side. "They learn week by week, in a very natural way, that these folks really aren't that different," says Doug.

Doug Baker has served the cause of peacemaking and reconciliation within various churches and institutions and has mentored Young Adult Volunteers in Belfast for more than 15 years.



Courtesy of Jed Koball

EMPOWERING FAMILIES IN PERU

Jed Koball has seen cooperation transform lives in Peru. Peruvian artisans have partnered to work in groups to improve livelihoods. Together with Presbyterians in the United States they have developed Bridge of Hope, which helps them market their creations. These efforts are part of Peru's Joining Hands network, in which Jed serves as a companionship facilitator. The 200 participants in the various artisan groups have seen higher incomes

and improved livelihoods. Maria, a wife and a mother of three, now earns enough through her sewing cooperative to send a son with Down syndrome to a school for special-needs children.

Jed Koball, who helps facilitate the network "Uniendo Manos Contra Pobreza" (Joining Hands Against Poverty), shares a laugh with young friends.

COMMUNICATIONS AND FUNDS DEVELOPMENT

Karen L. Schmidt, Deputy Executive Director



We support the work of mission and ministry in the GAMC. Our role is to listen, tell, ask, and thank. Through church gatherings and visits, social media, and many other ways, we

listen for constituents' passions and God's calling in mission and ministry. We use publications, videos, e-newsletters, and other media to tell compelling stories of mission and ministry that engage Presbyterians and highlight the importance of their support. Our funds development ministry has learned that as we share these stories it is important to invite engagement. We have learned that Presbyterians are excited to engage in the mission and ministry of the church and are equally excited to give out of the resources that God has given them. Through our Special Offerings and other appeals, we ask church leaders and members to become involved in the church's work through vital financial support. Finally, we thank donors promptly for their abundant and much-needed generosity in stewarding God's gifts.

Karen L. Schmidt

CFD Ministry Areas

CFD Administration
Church Financial Campaign Services
Creative Services
Executive Office and Policy Communications
Funds Development Ministry
Mission Communications
Mission Resources
Presbyterian News Service
Relationship and Development Operations
Special Offerings
Stewardship



LIFTING UP STORIES OF IMPACT YEAR-ROUND

Through publications like *Presbyterians Today*, the *Presbyterian Mission Yearbook for Prayer & Study*, the *Presbyterian Planning Calendar*, and others, Mission Resources publishes the best “impact” stories to showcase the mission of the church and serve as an important ministry and stewardship tool for congregations. Financially self-sustaining, Mission Resources funds its operations through the sale of publications, subscriptions, and advertising.

www.pcusa.org/today

www.pcusa.org/missionyearbook

www.pcusa.org/planningcalendar

*In addition to the flagship publications above, in 2011 Mission Resources also produced a best-selling new resource, *What Presbyterians Believe*, which sold 100,000 copies in 2011 alone.*



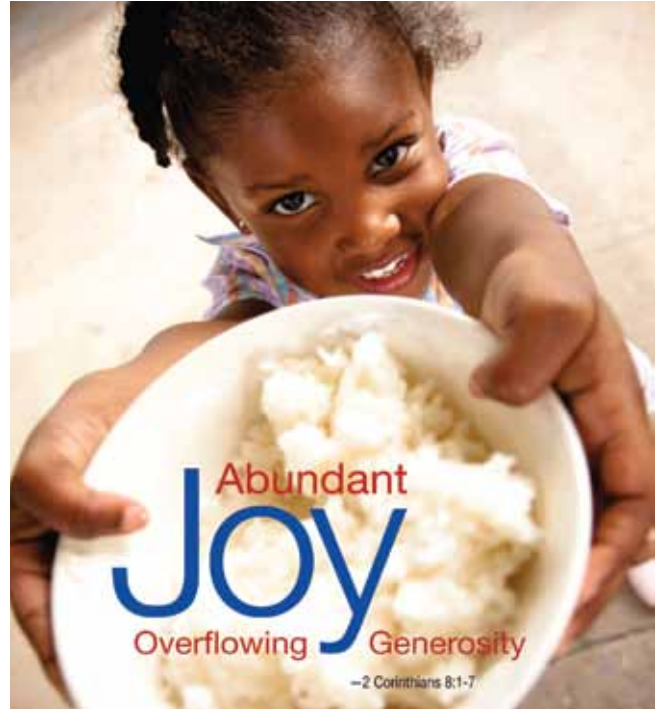
NEW WAYS TO SHARE GOD'S GIFTS

Marie Hippolite could only watch as her house collapsed during the 2010 earthquake in Haiti. She suddenly found herself homeless and on her own to care for her two children, a grandchild, and another orphaned child. But thanks to Presbyterian gifts, including One Great Hour of Sharing, and our work with partners in Haiti, she again has a home—and hope.

Through the four churchwide special offerings, the GAMC helps to feed the hungry, respond to disasters, bring hope to the poor and oppressed, minister to children and youth, support racial ethnic education, train young adult leaders, and work for peace in communities around the world. Presbyterians are giving generously to help others. In 2011 Special Offerings received 21,886 gifts totaling \$13,627,061.

www.pcusa.org/specialofferings

Mobile giving provides Presbyterians with an additional opportunity to support the many programs and ministries benefiting from the PC(USA) Special Offerings.



INSPIRED IDEAS TO FUND CHRIST'S MISSION

What are some of the great ways that congregations motivate people to give? At Forest Lake Presbyterian Church in Columbia, S.C., Margaret Harris sets up a birthday-card table in the church lobby once a month. Worshipers who stop by to select and sign a card for members also place in their envelope a gift for the Forest Lake Endowment Fund. The Stewardship website lists such tried-and-true ideas plus best practices and downloadable resources to encourage financial discipleship. Our monthly e-newsletter lifts up stewardship education opportunities. We've also partnered with Indiana University's Lake Institute on Faith and Giving to help presbyteries learn about the altered landscape of religious giving and tailor successful congregational stewardship programs.

www.pcusa.org/stewardship

The GAMC provides stewardship resources, including annual campaign themes and materials for congregations, in partnership with 18 other denominations in the United States and Canada, through the Ecumenical Stewardship Center.

SHARED SERVICES

Joey Bailey, Deputy Executive Director



The work of Shared Services isn't often in the spotlight, because our ministry is focused on undergirding the more visible ministries described in this report. But each day you will find Shared Services at work, often behind the scenes, providing the church with the highest quality services in support of mission. Our goal is excellence—in logistics, financial services, and information technology—so that more of the church's resources can be dedicated to Christ's mission.

Joey B. Bailey

Shared Services

Building Services
Finance & Accounting
Information Technology
Mail/Print Center
Presbyterian Distribution Service/Hubbard Press



Courtesy of Communications and Funds Development



Carol Johnson



Dana McMahon

SERVING CONGREGATIONS FOR 100 YEARS

In 1911 the Rev. William H. Hubbard began printing church offering envelopes in a bowling alley as a low-cost and customizable alternative for congregations. When he died in 1913, his widow turned press operations over to the Presbyterian Church as a continued service to its congregations. The service continues to this day. In 2011 Hubbard Press moved from Findlay, Ohio, to join with Presbyterian Distribution Service in Louisville, Ky. The move means labor sharing, creative collaboration

on additional printing projects, and lower annual costs, thereby allowing the press both to continue one of the most competitive offering envelope programs for small congregations and to make an annual financial contribution to GAMC mission.

James Calking and Wayne Moore shown working at Hubbard Press, which produces offering envelopes at low cost to more than 5,000 congregations.

EXECUTIVE DIRECTOR'S OFFICE

Vincent M. Patton, Executive Administrator



The Executive Director's Office provides coordination for the work of the General Assembly Mission Council, including support for meetings of elected Council members, regular leadership team

meetings, collaboration with other Assembly agencies, and corporate functions such as legal services, human resources, internal audit, and risk management.

Our work is guided by a commitment to CARE (collaboration, accountability, responsiveness, and excellence) in all we do. Highlights in 2011 include the beginnings of a 2013–2016 strategy process and increased communication between the advocacy committees and the General Assembly Mission Council.

Vincent Patton

Executive Director's Office

Advocacy Committee Support (Advocacy Committee for Women's Concerns and Advocacy Committee for Racial Ethnic Concerns)

Human Resources

Internal Audit

Legal and Risk Management Services

Mid Council Relations

DIVERSE LEADERSHIP FOR A DIVERSE CHURCH

The Diversity in Leadership Network launched at Big Tent in June 2011. The immediate response was inspiring, as many Presbyterians completed the registration while at Big Tent and in the days, weeks, and months that followed. The Diversity in Leadership Network is a collaborative effort among the six agencies of the PC(USA). It was formed because of our desire to become a diverse and multicultural community of faith that offers employment opportunities at all levels



to women and men of all backgrounds and nationalities. In addition to providing a recruitment tool to identify individuals with leadership qualities, the network provides a variety of resources for managing and advancing diversity and inclusion within the church.

A group of representatives from the six General Assembly agencies, gathered for conversation during the "One Church, One Field, One Staff" meeting in January 2011

EVEN BIGGER TENT

Buoyed by increased attendance and a warm welcome from the Presbytery of Whitewater Valley in Indianapolis, Ind., Big Tent featured nine conferences: Clergywomen's Leadership Institute and Young Women's Leadership Development, Evangelism and Church Growth Conference, Healthy Ministry Conference, National Elders Conference, National Multicultural Conference, Peacemaking Conference, Presbyterian Communicators Network National Conference, Racial Ethnic and Immigrants Convocation, and World Mission

Matters. GAMC staff helped plan and provide leadership for each conference. The more than 1,700 Presbyterians who attended joined together in worship, prayer, and celebration and were inspired to heed God's call to grow Christ's church deep and wide.

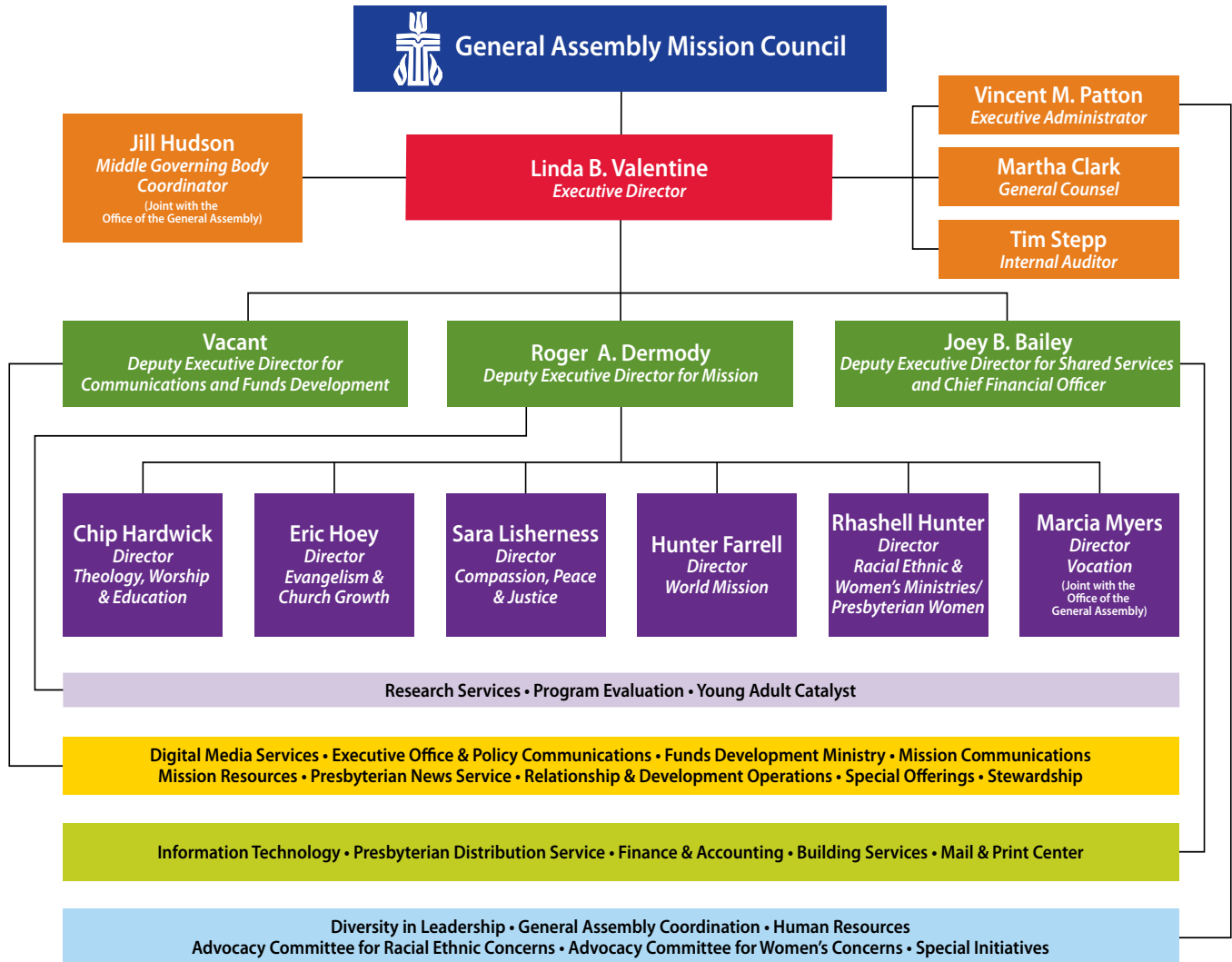
Big Tent II brought more than 1,700 Presbyterians to Indianapolis for three days of worship, workshops, and conversations.



Erin Dunigan

GENERAL ASSEMBLY MISSION COUNCIL ORGANIZATIONAL CHART

As of May 2012



GENERAL ASSEMBLY MISSION COUNCIL MEMBERS

As of May 2012

Executive Committee

Steve Aeschbacher
Clark Cowden
Alan Ford
Roger Gench
Michael Kruse (c)
Carolyn McLarnan (vc)
Marta Rodriguez
Matthew Schramm
Joyce Smith
Linda Valentine (ex officio)

Discipleship Committee

Steve Aeschbacher (c)
Molly Baskin*
Rachel “Mihee” Kim-Kort
Jung Nam Lee*
Kears Pollock
Ethan Powell
Marta Rodriguez (vc)
Glen Snider

Evangelism Committee

Clarence Antioquia
Melissa DeRosia (vc)
Sue Ezell
Vicki Garber*
Heath Rada
Marianne Rhebergen*
Matthew Schramm (c)
Joyce Smith

Justice Committee

Rob Brink
Teresa Bryce Bazemore (vc)
Roger Gench (c)
Aleida Jernigan
Janet Martin
Bruce Reyes-Chow
Noelle Royer

Stewardship Committee

Arthur Canada
William Capel
Jean Demmler
Alan Ford (c)
Jack Hodges
Lavert Jones (vc)
Jack Shelver
Kathy Trott
Connie Tubb

Vocation Committee

Clark Cowden (c)
Jan Dowlearn
Marilyn Gamm*
Cruz Negron-Torres
Reginald Parsons
Cathryn Piekarski (vc)
Charles “Arlin” Talley

Audit Committee

Gordon Nielsen
Reginald Parsons (c)
Kears Pollock
Joyce Smith
Richard Allen Turpen

*With gratitude for their
service and ministry, we
acknowledge the following
former Council members
who served in 2011:*

Olanda Carr
Dhyan Cassie
Nancy Caudel
Thomas Gillespie
(deceased)
Philip Hougen
Robert James
Michael Kinnamon
Jacquie Lyman

Corresponding Members

Gloria Albrecht, Advisory Committee on Social Witness Policy
Deborah Block, Presbyterian Publishing Corporation
Stephen Hsieh, Advocacy Committee for Racial Ethnic Concerns
James L. Hudson, Presbyterian Investment and Loan Program
Leah Johnson, Committee on the Office of the General Assembly
Marc Lewis, Presbyterian Publishing Corporation
Robert W. Maggs Jr., Board of Pensions
Doug McArthur, Presbyterian Foundation
Thomas Paisley, Board of Pensions
Gradye Parsons, Office of the General Assembly
James B. Rea Jr., Presbyterian Investment and Loan Program
Belinda Rice, Advocacy Committee for Women’s Concerns
Tom Taylor, Presbyterian Foundation
Linda B. Valentine, General Assembly Mission Council

Ex Officio

Cynthia Bolbach, Moderator of the 219th General Assembly
(2010)

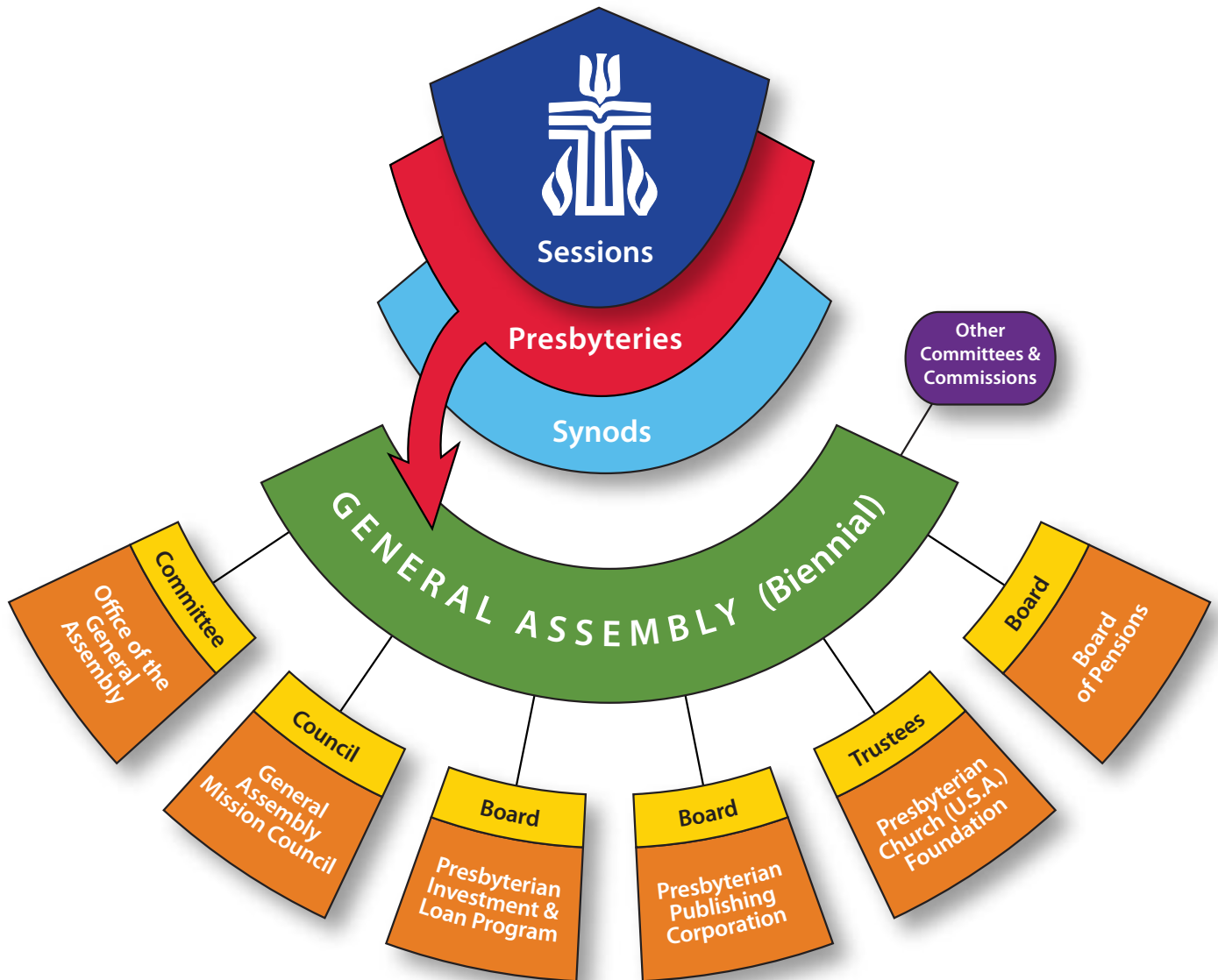
GAMC Ministry Leadership Team (MLT)

Joey B. Bailey, Deputy Executive Director of Shared Services**
Martha Clark, Director of Legal/Risk Management Services
and General Counsel
Barry Creech, Director of Executive Office and
Policy Communications
David Crittenden, Director of Stewardship
Roger A. Dermody, Deputy Executive Director for Mission**
Hunter Farrell, Director of World Mission
Denise Hampton, Controller
Chip Hardwick, Director of Theology, Worship and Education
Eric Hoey, Director of Evangelism and Church Growth
Jill Hudson, Coordinator of Mid Council Relations (GAMC/
OGA)**
Rhashell Hunter, Director of Racial Ethnic & Women’s
Ministries/Presbyterian Women
Sara Lisherness, Director of Compassion, Peace and Justice
Sam Locke, Director of Special Offerings
Marcia Myers, Director of Vocation (GAMC/OGA)
Vincent M. Patton, Executive Administrator**
Lisa Robbins, Director of Human Resources
Karen L. Schmidt, Deputy Executive Director of
Communications and Funds Development**
Dottie Smith, Director of Finance and Accounting
Michael Trier, Director of Information Technology
Linda B. Valentine, Executive Director**

(c) Chair; (vc) Vice Chair; * New in 2012

** Executive Leadership Team

PRESBYTERIAN CHURCH STRUCTURAL ORGANIZATION



BOARD OF PENSIONS

www.pensions.org

The Board of Pensions serves more than 50,000 ministers of the Word and Sacrament, other church workers, and dependents who participate in the Presbyterian Church (U.S.A.) benefits plan. The Board pledges to care for servants of the church throughout retirement and, after their deaths, for their dependents. The Board manages investments of \$6.8 billion and paid out almost \$308 million in pension benefits in 2011. The active medical plan paid nearly \$178 million in medical claims, while collecting nearly \$165 million in dues/contributions, and awarded more than 1,250 assistance grants totaling over \$5.3 million.

GENERAL ASSEMBLY MISSION COUNCIL

www.pcusa.org/gamc

The General Assembly Mission Council is the mission and ministry agency of the Presbyterian Church (U.S.A.). In countless ways and countless places, the spirit of the Great Commission—coupled with the charge by the 2008 and 2010 General Assemblies to “Grow Christ’s Church Deep and Wide”—renewed the GAMC in its call to inspire, equip, and connect Presbyterians to join in God’s mission for the transformation of the world. Six ministry areas carry out the GAMC’s mission work: Compassion, Peace and Justice; Evangelism and Church Growth; Racial Ethnic & Women’s Ministries/Presbyterian Women; Theology, Worship and Education; Vocation; and World Mission.

OFFICE OF THE GENERAL ASSEMBLY

www.pcusa.org/oga

Empowered by the Holy Spirit, the Office of the General Assembly (OGA) encourages the Presbyterian Church (U.S.A.) to be a people of hope—seeking the mind of Christ, working for justice and mercy, and participating in God’s continual reformation of the church. Under the leadership of the stated clerk, the OGA serves as the denomination’s ecclesiastical arm, helping the church be the church as defined by the PC(USA) constitution. The OGA offers support for the church’s governance and structure and seeks to bring alive a clear, common calling to actively engage with and respond to the reality of a changing church.

PRESBYTERIAN FOUNDATION

www.presbyterianfoundation.org

The Presbyterian Foundation was established in 1799 to raise, safeguard, and distribute funds for mission. A vital part of the Presbyterian Church (U.S.A.), the Foundation is committed to strengthening congregations, presbyteries, synods, the General Assembly, seminaries, colleges and universities, retirement communities, and other church entities by developing gifts and managing funds on their behalf and working with them to build communities of generosity among their members and constituents. We provide all Presbyterians an avenue to realize their philanthropic goals through a variety of giving options and maintain a strong focus on the Reformed values that guide our stewardship and investment.

PRESBYTERIAN INVESTMENT AND LOAN PROGRAM

www.pcusa.org/pilp

The Presbyterian Investment and Loan Program Inc. (PILP) provides low-cost loans to Presbyterian churches and entities that are building, expanding, remodeling, or reshaping ministry space. Funds come from PC(USA) endowments and investments from members, churches, and church governing bodies. Investors participate by purchasing interest-bearing term notes. PILP uses these investments to make loans to churches for capital projects. The churches repay the loans with interest, some of which goes back to investors. The remainder covers PILP’s operating costs and provides capital to fund more loans.

PRESBYTERIAN PUBLISHING CORPORATION

www.ppcbooks.com

Building on the Reformed tradition, the Presbyterian Publishing Corporation (PPC) seeks to glorify God by contributing to the spiritual and intellectual vitality of Christ’s church. The Presbyterian Publishing Corporation publishes resources that advance religious scholarship, stimulate conversation about moral values, and inspire faithful living. PPC publishes under four imprints: Westminster John Knox Press, Geneva Press, The Thoughtful Christian, and The Presbyterian Leader. The Presbyterian Publishing Corporation releases approximately 50 new titles each year and has a backlist of more than 1,800 titles.

INTRODUCTION TO FINANCIAL DATA

In 2011 more than \$73 million was generated and disbursed for mission and ministry under the stewardship of the General Assembly Mission Council.

Overall, receipts for 2011 were \$2 million below budget; however, thanks to careful management, expenses were \$3 million below budget. We ended the year with a favorable position for our Presbyterian Mission Program Fund (unrestricted reserves used for additional ministries and to manage cash flow and contingencies).

For the past decade unrestricted receipts have continued a downward trend. We experienced exceptions in 2006 and 2010 due to large bequests. Restricted receipts have also been in decline for this period, except for 2005 and 2010, which showed upturns because of large disaster assistance. In view of these trends, the GAMC has reduced or reconfigured staff and programs to closely match expenses with available revenue.

The charts and graphs on the pages that follow provide greater detail about the sources and uses of funds for each ministry area. This information is provided as part of our commitment to be accountable, transparent, and responsible stewards of the funds entrusted to us for the mission and ministry work of the whole church.

The Stewardship of Mission Funds

According to our audited 2011 financial statements, the GAMC's operating expenses by functional classification for 2011 are as follows:

Program expenses	94%
Management and general expenses	1%
Fundraising expenses	3%
Payments to affiliates ¹	2%
Total	100%

Independent Auditor's Opinion

The full set of audited financial statements and notes is available at our website, www.pcusa.org/financials. Crowe Horwath LLP has expressed an unqualified opinion on the consolidated financial statements of the Presbyterian Church (U.S.A.), A Corporation, as of December 31, 2011, and for the year then ended.

¹ Includes Christmas Joy Offering receipts paid to the Board of Pensions, National Mission Partnership Funds paid to synods, and designated ECO gifts paid to affiliated organizations.

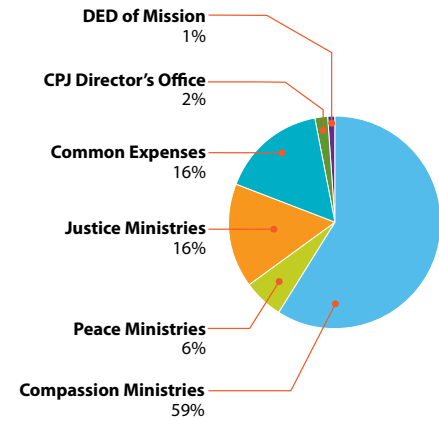


Photos by Jolea Brown

COMPASSION, PEACE AND JUSTICE

2011 Actual

Uses of Funds

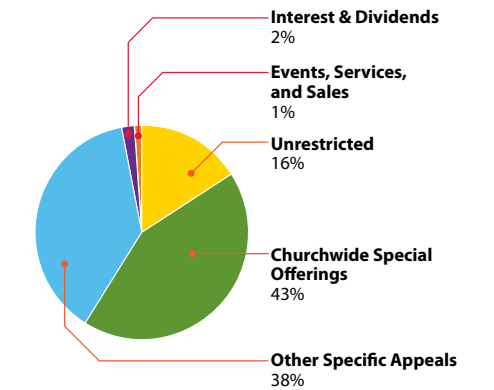


Sources of Funds

(\$ Thousands)

Uses of Funds	UNRESTRICTED							RESTRICTED		TOTAL
	Shared Mission and Interest & Dividends	Churchwide Special Offerings	Other Specific Appeals	Additional Forms of Giving	Directed Mission Support	Interest & Dividends	Events, Services, and Sales	Total Restricted		
Compassion Ministries		5,099	6,813			3		11,916	11,916	
Peace Ministries	597	439	13	6		113	32	603	1,200	
Justice Ministries	417	2,273	397	14		280	1	2,965	3,382	
CPJ Director's Office	22	342				6		348	370	
Deputy Executive Director's Office	94			50	3	6	521	112	206	
Common Expenses (See note, page 38)	2,033							1,146	3,179	
	3,163	8,153	7,223	70	3	408	84	17,090	20,253	

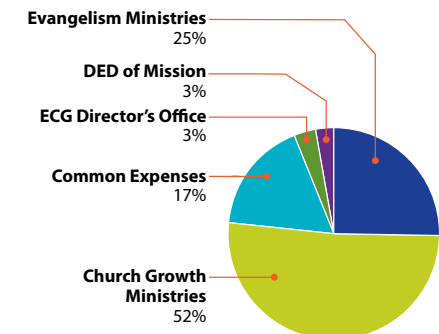
Sources of Funds



EVANGELISM AND CHURCH GROWTH

2011 Actual

Uses of Funds

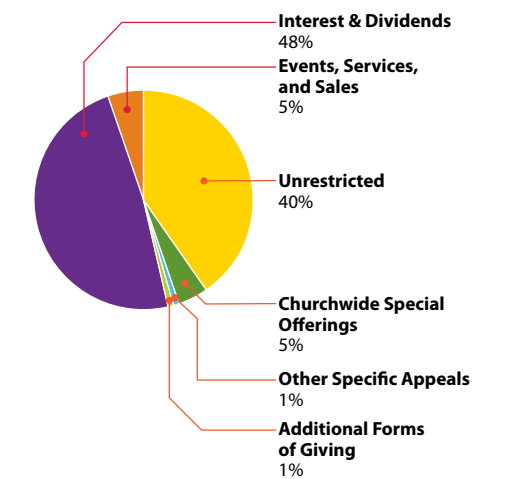


Sources of Funds

(\$ Thousands)

Uses of Funds	UNRESTRICTED							RESTRICTED		TOTAL
	Shared Mission and Interest & Dividends	Churchwide Special Offerings	Other Specific Appeals	Additional Forms of Giving	Directed Mission Support	Interest & Dividends	Other	Events, Services, and Sales	Total Restricted	
Evangelism Ministries	291	250	31		4	885		83	1,253	1,544
Church Growth Ministries	1,182		10			1,798		151	1,959	3,141
ECG Director's Office	135	10	5		18	31		6	70	205
Deputy Executive Director's Office	94			50	3	6	1	52	112	206
Common Expenses (See note, page 38)	767								237	1,004
	2,469	260	46	50	25	2,720	1	292	3,631	6,100

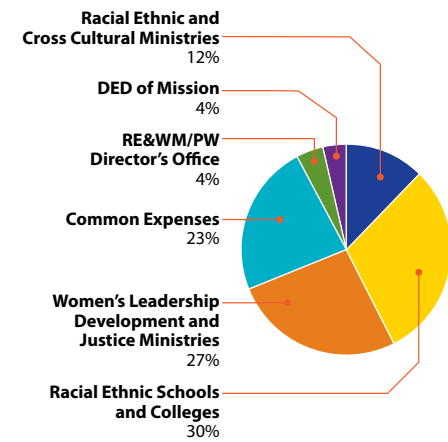
Sources of Funds



RACIAL ETHNIC & WOMEN'S MINISTRIES/PW

2011 Actual

Uses of Funds

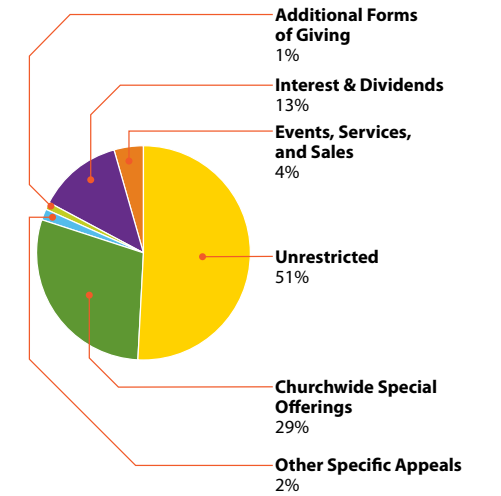


Sources of Funds

(\$ Thousands)

Uses of Funds	UNRESTRICTED								RESTRICTED		TOTAL
	Shared Mission and Interest & Dividends	Churchwide Special Offerings	Other Specific Appeals	Additional Forms of Giving	Directed Mission Support	Interest & Dividends	Other	Events, Services, and Sales	Total Restricted		
Racial Ethnic and Cross Cultural Ministries	562	21		9		51		61	142	704	
Racial Ethnic Schools and Colleges		1,457		2		269			1,728	1,728	
Women's Leadership Development and Justice Ministries	1,022	7	75			321		83	486	1,508	
RE&WM/PW Director's Office	214				2	1		20	23	237	
Deputy Executive Director's Office	94			50	3	6	1	52	112	206	
Common Expenses (See note, page 38)	1,009								322	1,331	
	2,901	1,485	75	61	5	648	1	216	2,813	5,714	

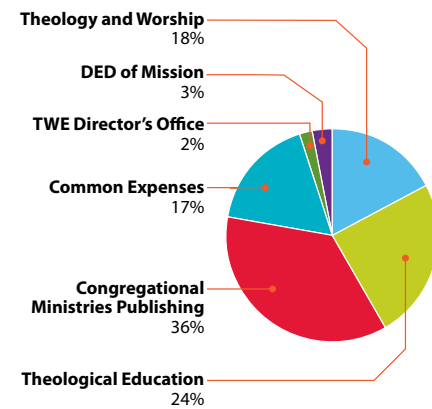
Sources of Funds



THEOLOGY, WORSHIP AND EDUCATION

2011 Actual

Uses of Funds

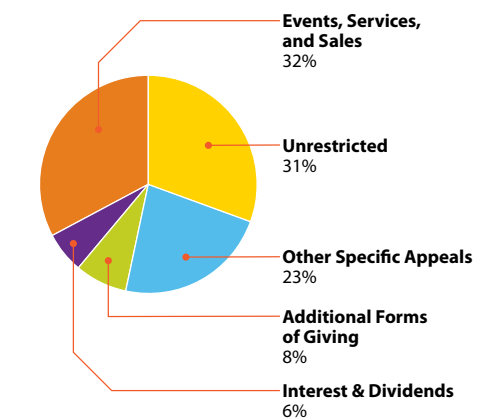


Sources of Funds

(\$ Thousands)

Uses of Funds	UNRESTRICTED							RESTRICTED		TOTAL
	Shared Mission and Interest & Dividends	Other Specific Appeals	Additional Forms of Giving	Directed Mission Support	Interest & Dividends	Other	Events, Services, and Sales	Total Restricted		
Theology and Worship	586	28	481	3	103		91	706	1,292	
Theological Education	238	1,557						1,557	1,795	
Congregational Ministries Publishing	193	16			329		2,137	2,482	2,675	
Interfaith Relations						14		14	14	
TWE Director's Office	144								144	
Deputy Executive Director's Office	94		50	3	6	1	52	112	206	
Common Expenses (See note, page 38)	1,014							261	1,275	
	2,269	1,601	531	6	438	15	2,280	5,132	7,401	

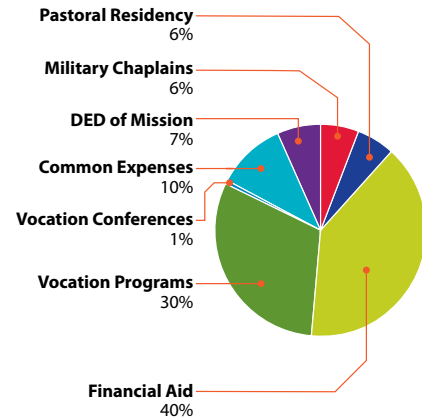
Sources of Funds



OFFICE OF VOCATION

2011 Actual

Uses of Funds

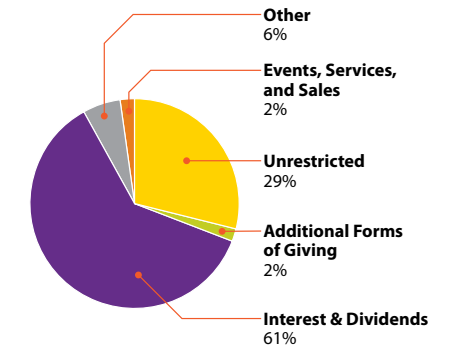


(\$ Thousands)

Uses of Funds	UNRESTRICTED	RESTRICTED						TOTAL	
	Shared Mission and Interest & Dividends	Other Specific Appeals	Additional Forms of Giving	Directed Mission Support	Interest & Dividends	Other	Events, Services, and Sales	Total Restricted	
Military Chaplains	183								183
Pastoral Residency					51	107		158	158
Financial Aid		2			1,224	10		1,236	1,236
Vocation Programs					19	12		31	31
Vocation Conferences					19			19	19
Deputy Executive Director's Office	94		50	3	6	1	52	112	206
Common Expenses (See note, page 38)	326							(2)	324
	603	2	50	3	1,319	130	52	1,554	2,157

*The Office of Vocation is a shared ministry with the Office of the General Assembly, and a large part of its budget is funded by per capita.

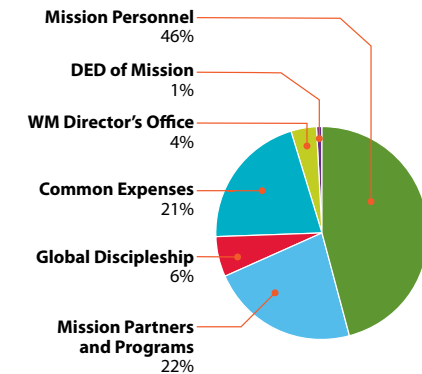
Sources of Funds



WORLD MISSION

2011 Actual

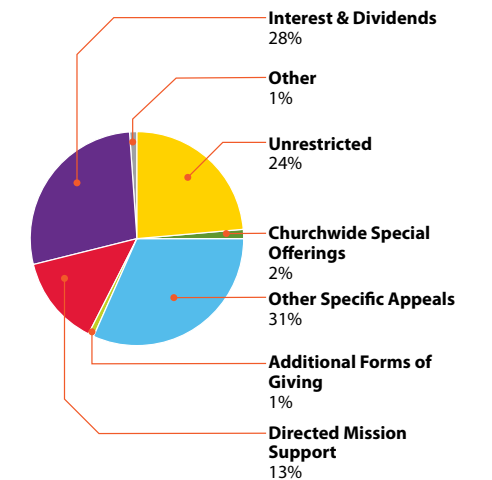
Uses of Funds



(\$ Thousands)

Uses of Funds	UNRESTRICTED	RESTRICTED						TOTAL		
	Shared Mission and Interest & Dividends	Churchwide Special Offerings	Other Specific Appeals	Additional Forms of Giving	Directed Mission Support	Interest & Dividends	Other	Events, Services, and Sales	Total Restricted	
Mission Personnel	909	3	4,402	6	2,610	2,650	180		9,851	10,760
Mission Partners and Programs	710		1,401	84		2,327			3,812	4,522
Global Discipleship	794	304	199	6	5	56	13	42	625	1,419
WM Director's Office	487		104	2		349			455	942
Deputy Executive Director's Office	94				50	3	6	52	112	206
Common Expenses (See note, page 38)	2,502								3,021	5,523
	5,496	307	6,106	148	2,618	5,388	194	94	17,875	23,371

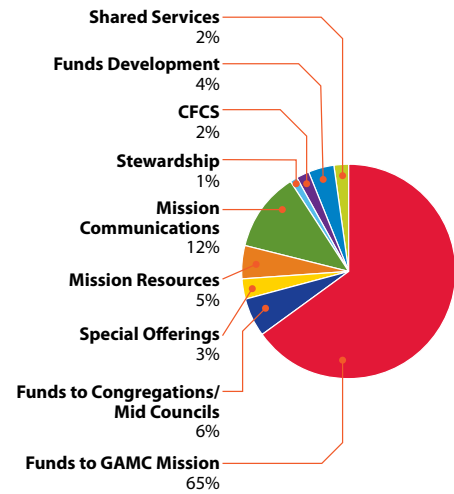
Sources of Funds



COMMUNICATIONS AND FUNDS DEVELOPMENT

2011 Actual

Uses of Funds

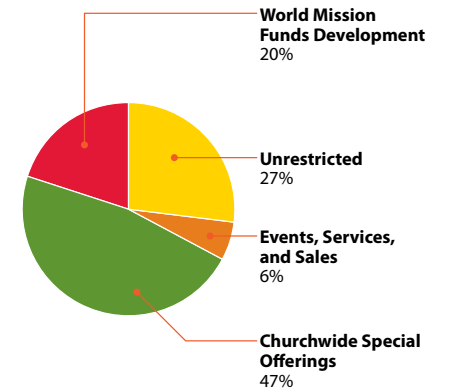


Distribution and Uses of Funds

(\$ Thousands)

Distribution and Uses of Funds	UNRESTRICTED	RESTRICTED				TOTAL	
	Shared Mission	Events, Services, and Sales	Additional Forms of Giving	Churchwide Special Offerings	World Mission Funds Development	Total Restricted	
Funds to GAMC Mission	7,514			11,963	4,847	16,810	24,324
Funds to Congregations/Mid Councils	921			1,431		1,431	2,352
Special Offerings				1,012		1,012	1,012
Mission Resources	238	1,581	25			1,606	1,844
Creative Services			12			12	12
Mission Communications	3,004		1,524			1,524	4,528
Stewardship	313						313
Church Financial Campaign Services	139	352	22			374	513
Funds Development					1,412	1,412	1,412
Relationship & Development Operations					88	88	88
Shared Services				649	164	813	813
Common Expenses (See note, page 38)	(3,317)		(1,524)			(1,524)	(4,841)
	8,812	1,933	59	15,055	6,511	23,558	32,370

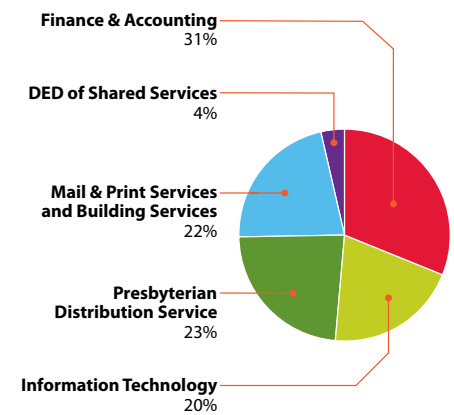
Sources of Funds



SHARED SERVICES

2011 Actual

Uses of Funds

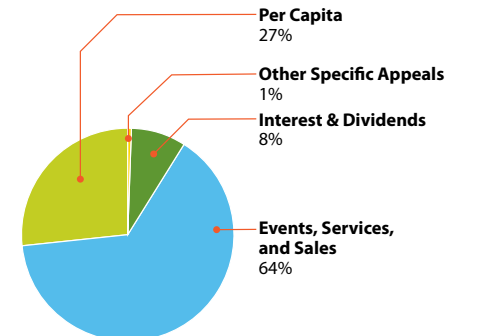


Uses of funds

(\$ Thousands)

Uses of funds	UNRESTRICTED	RESTRICTED					TOTAL	
	Shared Mission and Interest & Dividends	Other Specific Appeals	Interest & Dividends	Other	Events, Services, and Sales	Per Capita	Total Restricted	
Finance & Accounting	431	37	486	4	1,484	226	2,237	2,668
Information Technology	1,405				278	50	328	1,733
Presbyterian Distribution Service	597				1,399		1,399	1,996
Mail & Print Services and Building Services	1,007		3	17	524	302	846	1,853
Deputy Executive Director's Office						308	308	308
Common Expenses (See note, page 38)	(3,440)						(1,779)	(5,219)
	0	37	489	21	3,685	886	3,339	3,339

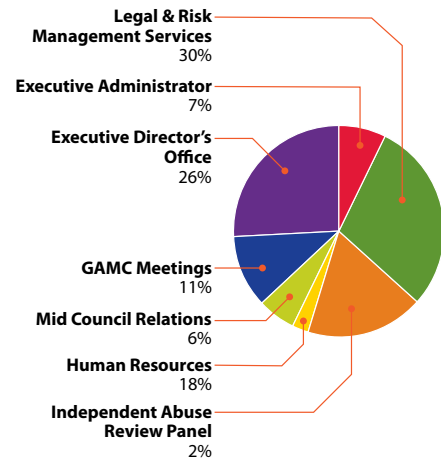
Sources of Funds



EXECUTIVE DIRECTOR'S OFFICE

2011 Actual

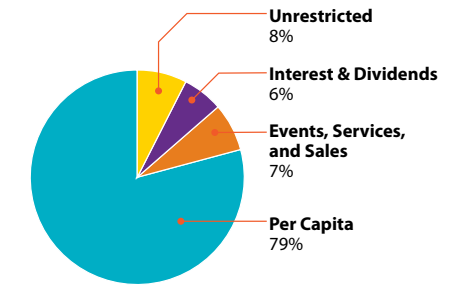
Uses of Funds



Uses of Funds

Uses of Funds	SOURCES OF FUNDS					TOTAL
	UNRESTRICTED	RESTRICTED				
	Shared Mission and Interest & Dividends	Interest & Dividends	Events, Services, and Sales	Per Capita	Total Restricted	
Executive Administrator	76			172	172	248
Legal & Risk Management Services	37	169	235	561	965	1,002
Human Resources	435		56	125	181	616
Independent Abuse Review Panel		79			79	79
Mid Council Relations				204	204	204
GAMC Meetings				379	379	379
Executive Director's Office				870	870	870
Common Expenses (See note, page 38)	(325)				(153)	(478)
	223	248	291	2,311	2,698	2,920

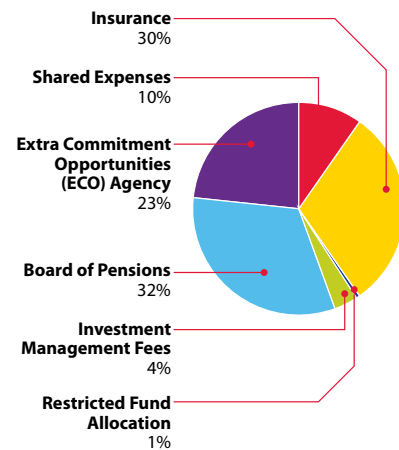
Sources of Funds



OTHER

2011 Actual

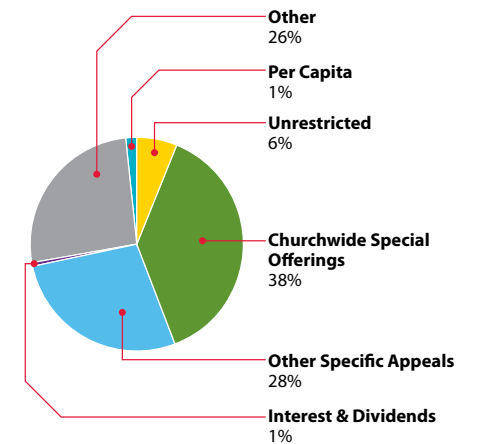
Uses of Funds



Uses of Funds

Uses of Funds	SOURCES OF FUNDS							TOTAL
	UNRESTRICTED	RESTRICTED						
	Shared Mission and Interest & Dividends	Churchwide Special Offerings	Other Specific Appeals	Interest & Dividends	Other	Per Capita	Total Restricted	
Shared Expenses	487					78	78	565
Insurance	485				1,256		1,256	1,741
Restricted Fund Allocation				33			33	33
Investment Management Fees	209							209
Board of Pensions		1,835					1,835	1,835
Extra Commitment Opportunities (ECO) Agency			1,327				1,327	1,327
Common Expenses (See note, page 38)	(860)						340	(520)
	321	1,835	1,327	35,562	1,256	78	4,869	5,190

Sources of Funds



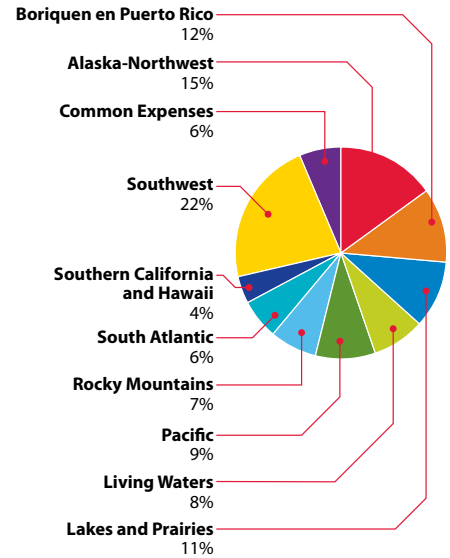
NATIONAL MISSION PARTNERSHIP FUNDS

2011 Actual

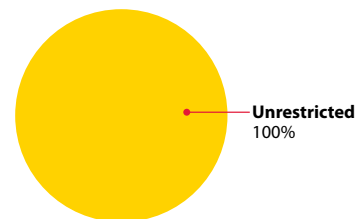
Sources of funds (\$ Thousands)

<i>Uses of funds</i>	UNRESTRICTED	TOTAL
	Shared Mission and Interest & Dividends	
Synod of Alaska-Northwest	375	375
Synod of Boriquen en Puerto Rico	286	286
Synod of Lakes and Praires	257	257
Synod of Living Waters	201	201
Synod of the Pacific	225	225
Synod of the Rocky Mountains	176	176
Synod of South Atlantic	155	155
Synod of Southern California and Hawaii	104	104
Synod of the Southwest	552	552
Common Expenses (<i>See note below</i>)	156	156
	2,487	2,487

Uses of Funds



Sources of Funds



Note to Financial Statements

Common expenses are the indirect expenses necessary to support each ministry, including facilities, human resources, communications support, finance and accounting, legal and risk management, and insurance.

FUNDING PRESBYTERIAN MISSION

Mission funding comes from many sources. Gifts that support the church's work fund general and specific mission.

Unrestricted Funds

Unrestricted funds, about 25% of our funding, demonstrate our connection as Presbyterians and provide resources for the church to be a collective witness to Christ. Sources of unrestricted funds include Shared Mission Support, endowments, interest and dividends, and bequests and annuities.

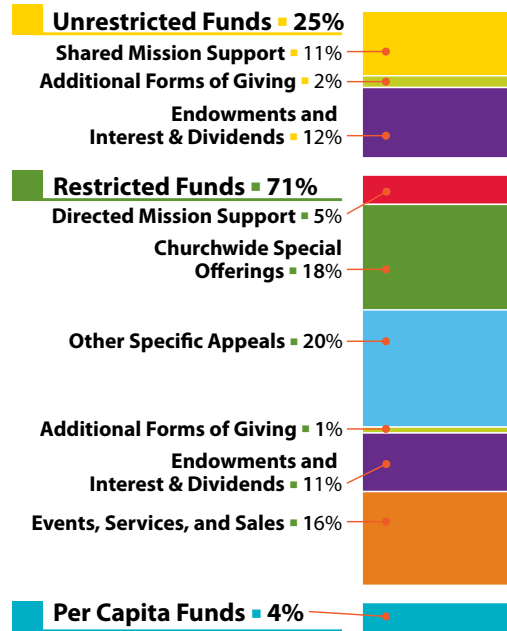
Restricted Funds

Restricted funds, about 71% of our funding, celebrate the particular commitments to mission made by members and congregations as they are called by God. Sources of restricted funds include Directed Mission Support, churchwide special offerings, other specific appeals (such as those for Presbyterian Disaster Assistance and extra commitment opportunities), endowments, bequests, and sales of resources and services.

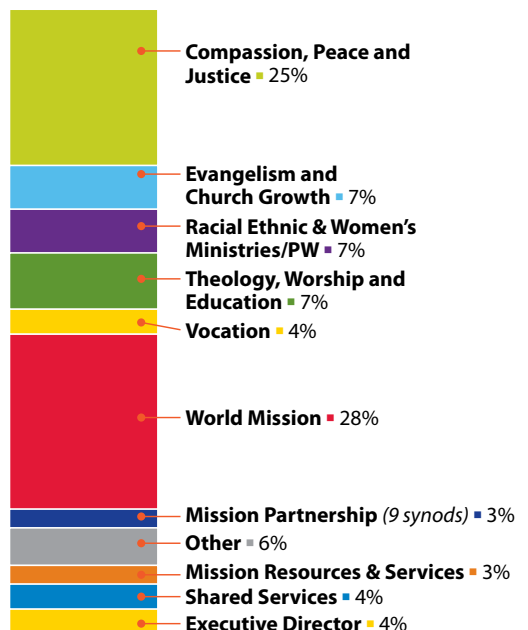
Per Capita Funds

Per capita funds, about 4% of the GAMC budget, are used for GAMC meetings, the Executive Director's Office, and other GAMC coordination; the office of Mid Council Relations (shared with the Office of the General Assembly); and advocacy and advisory committees.

How Presbyterian Mission Is Funded



How Your Funds Are Used



GENERAL ASSEMBLY MISSION

2011 Actual Sources of Funds

	MISSION BUDGET		(\$ Thousands)
	Unrestricted	Restricted	Total
Basic Mission Support	8,812	3,560	12,372
Shared Mission Support	8,812		8,812
Directed Mission Support		3,560	3,560
Churchwide Special Offerings		13,627	13,627
Christmas Joy		4,125	4,125
One Great Hour of Sharing		7,732	7,732
Peacemaking		1,009	1,009
Pentecost		758	758
Witness		3	3
Other Specific Appeals		15,589	15,589
Emergency and Disaster Relief		5,714	5,714
Extra Commitment Opportunity (ECO)		7,323	7,323
Mission Initiative: Joining Hearts & Hands		263	263
Special Missionary Support		222	222
Presbyterian Hunger Program		742	742
Theological Education Fund		1,325	1,325
Additional Forms of Giving	1,138	560	1,698
Presbyterian Women	410	413	823
Bequests and Annuities	728	77	805
Other Gifts		38	38
Validated Mission Support		11	11
Grants from Outside Foundations		21	21
Endowments and Interest & Dividends	9,156	8,079	17,235
PC(USA) Restricted Endowment Funds		5,832	5,832
PC(USA) Unrestricted Endowment Funds	7,007		7,007
Presbyterian Mission Program Fund	184	168	352
Outside Trusts	1,343	114	1,457
Jinishian Fund		1,703	1,703
Short-Term Investments	622	262	884
Other	26	12,536	12,562
Partner Churches and Other		164	164
Hubbard Press	15	38	53
Sales: Curriculum		2,482	2,482
Sales: Program Services		8,020	8,020
Sales: Resources	11	1,832	1,843
Total Receipts	19,132	53,951	73,083
Prior Year Accumulations	1,002	3,786	4,788
2011 Per Capita			3,275
Total Sources of Funding	20,134	57,737	81,146

GENERAL ASSEMBLY MISSION

2011 Actual Expenditures by Entity

	MISSION BUDGET		(\$ Thousands)	
	Unrestricted	Restricted	Per Capita Budget	Total
Executive Director's Office	223	387	2,311	2,921
Executive Administrator	223	387	172	782
Executive Director's Office			870	870
GAMC Meetings			379	379
Legal Services and Internal Audit			686	686
Mid Council Relations			204	204
Communications and Funds Development	377	1,992		2,369
Creative Services		12		12
Mission Resources	238	1,606		1,844
Church Financial Campaign Services	139	374		513
Mission	16,901	48,095		64,996
Compassion, Peace and Justice	3,163	17,090		20,253
Evangelism and Church Growth	2,469	3,631		6,100
Racial Ethnic & Women's Ministries/PW	2,901	2,813		5,714
Theology, Worship and Education	2,269	5,132		7,401
Vocation	603	1,554		2,157
World Mission	5,496	17,875		23,371
Shared Services		2,453	886	3,339
Finance and Accounting		252	226	478
Information Technology		278	50	328
Presbyterian Distribution Service		1,399		1,399
Mail and Print Services		145	302	447
Building Services		379		379
Deputy Executive Director for Shared Services			308	308
Other	2,727	4,716	78	7,521
Shared Expenses			78	78
Restricted Fund Allocation		33		33
Insurance		1,256		1,256
Board of Pensions	177	2,044		2,221
ECO Agency	63	1,383		1,446
Mission Partnership	2,487			2,487
Total Expenditures	20,228	57,643	3,275	81,146



**General Assembly
Mission Council**

100 Witherspoon Street

Louisville, KY 40202

www.pcusa.org/gamc