



PRESBYTERIAN MISSION AGENCY

# Annual Report 2015



- 1 About the Presbyterian Mission Agency
- 2 Message from Tony De La Rosa and Marilyn Gamm
- 3 A Word from Our Ministry Areas: 2015 in Review
- 5 The Work and Ministries of the Presbyterian Mission Agency
- 7 Healing a Hurting World: Compassion, Peace, and Justice
- 11 Raising Up Leaders: Racial Ethnic & Women's Ministries
- 15 Grace and Gratitude—Go, Disciple, Live: Theology, Formation, and Evangelism
- 18 Lifetime of Change: Youth and Young Adult Ministries
- 20 God's Faithfulness Endures: World Mission
- 24 Harbingers of Hope: Funds Development
- 26 Presbyterian Mission Agency Organizational Chart
- 27 Presbyterian Mission Agency Board Members
- 28 Presbyterian Church (U.S.A.) Organizational Chart
- 29 Overview of General Assembly Agencies
- 31 Financial Information

**On the cover:** Easter worship at 4Pointes Church, a new worshipping community formed by Peter Lim to serve second-generation Asian Americans in Atlanta | Photo courtesy of 4Pointes Church



At Presbyterian Youth Triennium, a young man remembers his baptism into the body of Christ. Thousands of youth will gather again for Triennium this summer in 2016.

### About the Presbyterian Mission Agency

*But those who drink of the water that I will give them will never be thirsty. The water that I will give will become in them a spring of water gushing up to eternal life. —John 4:14*

For more than 200 years, Presbyterians have been responding to the call of Jesus Christ, proclaiming and living out their faith, calling the church to do justice, and inviting all who thirst to drink the water of eternal life.

Today, the Holy Spirit is still on the move, calling us to share in what God is doing in the world. As your partner in Christ's service and the mission arm of the Presbyterian Church (U.S.A.), the Presbyterian Mission Agency is faithfully working to inspire, equip, and connect all Presbyterians to do Christ's mission, bringing together congregations, worshiping communities, mission networks, and other parts of the church ecosystem as they nurture and shape disciples and serve Christ in the world.

We share the love of Christ by working with you to eradicate hunger, support farmers, train peacemakers, educate children, assist with disaster recovery, end human trafficking, encourage cultural humility, engage in theological conversation, and raise up diverse leaders to meet the needs of a changing world—all while proclaiming the good news of God's saving grace.

As you'll read in these pages, our work is shared among four ministry areas that together help carry out our mission to inspire, equip, and connect Presbyterians to serve Christ in the world: Compassion, Peace and Justice; Racial Ethnic & Women's Ministries; Theology, Formation, and Evangelism; and World Mission.

As you see the faces and read the stories of the many dedicated people who partner with us, we hope that you will see yourself among the thousands of mission co-workers, facilitators, pastors, teachers, professors, volunteers, and members of mission networks who are sharing Christ's hope and healing. We hope that you will be inspired to join with us in God's mission for the transformation of the world. You can learn more by visiting our website at [presbyterianmission.org](http://presbyterianmission.org) or by finding many of our mission areas on Facebook and Twitter. We look forward to connecting with you as together we drink deeply of Christ's living water and call the world to join with us.



### Message from Tony De La Rosa and Marilyn Gamm

*I am about to do a new thing; now it springs forth, do you not perceive it? I will make a way in the wilderness and rivers in the desert. —Isaiah 43:19*

Throughout salvation history and everywhere in sacred story, faithful people have known deserts. In Exodus, the Holy One of Israel led God’s people through an uninhabited land of deserts into a land of plenty. Our Gospels recount Jesus being tempted in the desert. And we, too, know deserts. Both of us have lived and ministered in deserts. At times the conditions can seem unbearable—dry, barren, hopeless. And then, in what seems like an instant, new life springs forth. And rivers run.

Deserts in Scripture, whether literal or figurative, are always places of trial and testing, challenge and change. And the Presbyterian Mission Agency knows deserts.

2015 was a year of upheaval within the life of our denomination and within the agency. And yet, in that same year, the Presbyterian Church (U.S.A.) chartered new congregations as a vision of hope for the future of Christ’s witness. The 1001 New Worshiping Communities initiative is thriving. At the close of 2015, we announced that 13 new worshiping communities—made up of self-professed “geeks,” millennials, Arabic worshippers—would receive more than \$200,000 in mission program grants.

Rivers run in the desert.

Early in 2015, the agency was facing a significant financial challenge for 2016 and 2017 in World Mission. And yet by year’s end, we saw an increase in the number of individuals, congregations, and mid councils making financial gifts and trusting World Mission to help them make a lasting difference in the world.

Rivers run in the desert.

As we reflect on 2015, we are neither discouraged nor deterred, for we know and claim the desert, where seasons of change and challenge continually usher in new opportunities and new life. May God’s rivers ever run in the desert, as we—upheld by our creative, wise, loving, delivering, and gracious God—serve Christ in the world together with you, our partners in God’s mission.

Faithfully yours,

**Tony De La Rosa**, Interim Executive Director  
Presbyterian Mission Agency

**Marilyn S. Gamm**, Board Chair  
Presbyterian Mission Agency

### A Word from Our Ministry Areas: 2015 in Review



*Sara Lisherness, director of Compassion, Peace, and Justice, speaks with an Iraqi refugee in Kirkuk.*

#### Compassion, Peace, and Justice

##### Advocating for positive change

In many ways, 2015 was a painful reminder of the challenges facing the church. Gun violence continues to wreak havoc on communities across the United States, while war and hate drive millions of people from their homes in the Middle East. Around the world, communities

are facing starvation and health issues due to climate change and industrial pollution.

But the ministries of Compassion, Peace, and Justice are hopeful for change through the love and power of Jesus Christ.

#### Racial Ethnic & Women’s Ministries

##### Ending racism, empowering women, building intercultural communities

In Racial Ethnic & Women’s Ministries, we envision a world in which all communities have an equal voice and fully participate in church and society. To create such a world, we focus on leadership development, racial justice, women’s empowerment, intercultural ministries, and church growth and transformation.

In 2015, we provided grants for new worshiping communities, more than 50 percent of which are racial-ethnic or new immigrant, with a large

number led by women. We also participated in racial-ethnic Presbyterian Women’s gatherings, began a study on the status of women, and facilitated a churchwide conversation on race, racism, ethnicity, and ethnocentrism.

We affirm that “in sovereign love God created the world good and makes everyone equally in God’s image, male and female, of every race and people, to live as one community” (A Brief Statement of Faith).



*Rhaskell Hunter, director of Racial Ethnic & Women’s Ministries, leads Bible study at Big Tent.*

## A Word from Our Ministry Areas: 2015 in Review

### Theology, Formation, and Evangelism

#### Forming and transforming disciples

In 2015 the former ministry area of Theology, Worship, and Education was combined with the Evangelism and Church Growth area to create Theology, Formation, and Evangelism. This shift promises to bring together ministries that form and transform disciples, leaders, congregations, and new worshiping communities. Our ministries

are diverse but each empowers a unique witness to Jesus Christ: 1001 New Worshiping Communities, the Company of New Pastors, Congregational Ministries Publishing, Financial Aid for Service, Evangelism, New Beginnings, Theological Education, Theology and Worship, and Youth/College/Young Adult ministries.



Chip Hardwick, director of Theology, Formation, and Evangelism, preaches.

### World Mission

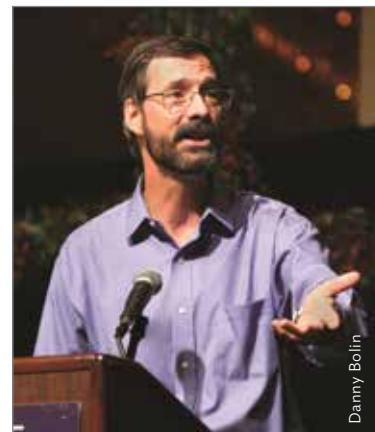
#### All things are possible

In a year of widespread turmoil, Presbyterian mission co-workers and church partners in 50 countries continued to passionately minister in word and deed, believing that all things are possible through Jesus Christ.

When budget shortfalls threatened to call home as many as 40 mission co-workers, Presbyterians responded with energy and creativity. Although there is still much work to be done, we are grateful for the prayers and gifts that will help us keep mission co-workers in service.

We also see hope in other parts of the world. In Egypt, there is an unprecedented openness, and 14 new churches are under construction. In South Sudan, we are bringing quality education to more than 40,000 children. Globally, we are working to end sexual violence against women and children and striving for environmental justice in Peru and Bolivia.

Please join us in praying fervently for peace and reconciliation in 2016.



Hunter Farrell, director of World Mission, speaks at the World Mission Celebration in Cincinnati.



#### The Work and Ministries of the Presbyterian Mission Agency

On the pages that follow, we celebrate the work of our friends, partners, and colleagues around the world, serving through the ministries of Compassion, Peace, and Justice; Racial Ethnic & Women's Ministries; Theology, Formation, and Evangelism; and World Mission. If you'd like to know more, please visit us at [presbyterianmission.org](http://presbyterianmission.org).

# Our Work and Ministries

# Advocacy

## Combating pollution in Peru

La Oroya, Peru, has the distinction of being one of the 10 most contaminated cities in the world. The small town is home to an extractive mining industry that emits toxins and other wastes into the land, air, and water. The town is also home to 11,000 children, nearly all of whom between the ages of six and 12 suffer from lead poisoning, lung issues, and other health problems as a result of the arsenic and other heavy metals spewed into the local environment.

Joining Hands-Peru, a Presbyterian Hunger Program partner, has long leveraged the concern of Presbyterians to improve laws and practices in La Oroya. Hundreds of Presbyterians engaged in a 2015 letter-writing campaign that opened a dialogue with government officials and resulted in the funding of new and improved health facilities for La Oroya and communities like it across Peru.

For more: [pcusa.org/joininghands](http://pcusa.org/joininghands)

Presbyterians from the United States join Peruvians in marching for justice during a Climate Change Reflection-Action trip, sponsored by Compassion, Peace, and Justice.

ACUERDOS Y ACCION  
CON JUSTICIA

Jed and Jenny Koball



Presbyterian Disaster Assistance volunteers install flooring in a home being repaired following Hurricane Katrina.

Dwight K. Morita

# Recovery

## Healing a Hurting World: Compassion, Peace, and Justice

### More than \$1.2 million in disaster relief

The year 2015 featured a multitude of disasters throughout the United States. There was a deluge of flooding in Texas and South Carolina. The Northeast saw record snows early in the year, including more than 100 inches in the Boston area, which left snow piles into June.

Wildfires consumed nearly 1,000 homes in Washington and Oregon.

Presbyterian Disaster Assistance relief teams traveled across the country to aid in these and other disasters. Nearly 100 volunteers were

deployed to 59 natural and human-caused disasters. In total, PDA disbursed more than \$1.2 million to 13 synods and 38 presbyteries in order to help congregations and individuals in their greatest time of need.

For more: [pcusa.org/pda](http://pcusa.org/pda)

### Healing from gun violence

In 2015, violence ripped through communities in California, Oregon, South Carolina, Colorado, and across the United States, as the lives of college students, church members, parents, sons, and daughters came to an abrupt end by gunfire.

Presbyterians have been at the forefront to help communities heal and to urge Congress to strengthen legislation. Presbyterian Disaster Assistance's National Response Team has provided skilled volunteers to support healing communities.

Renewed interest in *Trigger*, a church-produced documentary on the impact of gun violence, has provided an opportunity for congregations and communities to work together. Seminars



have helped churches understand General Assembly policy on gun violence. And Ferncliff Camp and Conference Center is sharing its 20 years of experience operating post-gun-violence healing camps with a new network so that similar camps can be offered across the country.



Erica Lafferty and Richard Martinez at a Ferncliff gathering for victims of gun violence

### Unlocking the refugee crisis

As the refugee crisis deepens, the church has embraced the biblical mandate to welcome the stranger and follow Jesus, who was himself a child refugee. Thousands of immigrants remain locked in US detention centers while refugees from the Middle East flee for their lives.

In 2015, the Office of Public Witness led efforts in lobbying the White House to respond to the crisis with greater compassion. The Presbyterian Ministry at the United Nations raised awareness through seminars, and Presbyterian Disaster Assistance's award-winning new documentary, "Locked in a Box," explored the crisis of detention and invited people of faith to open their hearts.

PDA funds provided relief in Syria and Lebanon and supported Syrians in transit through Europe. PDA is working alongside congregations and mid councils as they receive refugees, visit detainees, and train volunteers to support welcome.



Syrian refugees receive relief kits.



Amgad Beblawi, area coordinator for World Mission in the Middle East and Europe, with Assyrian children at a refugee camp in Iraq

# Refuge

# Equality



Approximately 1,000 Presbyterians gather at Montreat to commemorate the 50th anniversary of Martin Luther King Jr.'s appearance on the campus.

Joseph Williams

## Raising Up Leaders: Racial Ethnic & Women's Ministries

### *Presbyterians confront racism*

At the direction of the 221st General Assembly (2014), a churchwide conversation was held to explore solutions to visible and invisible discrimination.

Selected from throughout the Presbyterian Church (U.S.A.), 40 participants gathered at Stony Point Conference Center for a discussion on race, ethnicity, racism, and ethnocentricity.

"This churchwide conversation is very significant at this time in our nation," said Rhashell Hunter, director of Racial Ethnic & Women's Ministries. "I am hopeful that we will find willing partners who can commit to the achievable goal of ending racism, becoming a more culturally humble church, and creating an environment of equality for all of God's children."

This was the first conference of its kind for the PC(USA) sponsored by Racial Ethnic & Women's Ministries. A report on the conference will be submitted to the 222nd General Assembly (2016) in Portland.

## *Ghanaian women share hopes and dreams*

"For many new immigrant women, the only places they may find leadership opportunities are in their women's groups, which are often very insular. I want the women I'm speaking with to understand they have the power to change that. Their voices need to be heard across the church," said Terri Ofori, pastor and keynote speaker at the 14th annual Ghanaian Presbyterian Women's Fellowship Gathering.

Sponsored in partnership with Racial Ethnic

& Women's Ministries, the gathering, which is used as a platform for leadership development, brought together more than 300 African immigrant women from across the Presbyterian Church (U.S.A.) and the Presbyterian Church of Canada for three days of worship, workshops, fellowship, and business.

In 2014, the women raised \$6,300 through a silent auction, which will help provide textbooks for schools across the Afram Plains District.



Ghanaian Presbyterian Women

*Ghanaian Presbyterian Women's Fellowship Gathering*

# Community



A rally during the United Nations Commission on the Status of Women

Racial Ethnic & Women's Ministries

# Dialogue

## Exploring women's leadership

Women from across the Presbyterian Church (U.S.A.) gathered in Chicago for the Study on the Status of Women Theological Consultation to examine how to feed the flames of women's leadership in the church.

"We know relatively little about the experience of women who serve the church," said Elizabeth Hinson-Hasty, professor and chair of theology

at Bellarmine University. "Conversations like the one you'll have here will help shed light on the true experience of women in the church."

The consultation requires a commitment for action beyond the gathering. Attendees will continue to hold discussions and gatherings over the coming months, and will work closely with Racial Ethnic & Women's Ministries staff.

# Training



## Spreading God's love in Georgia

"As a pastor who works primarily with new immigrants, it can be difficult to find courses and training that specifically address the needs we see on a daily basis. The training offered through Racial Ethnic & Women's Ministries—through leadership development institutes and coaching programs—is so critical to help meet the needs that other training programs may not offer," says Ozeas Silva, pastor of the new worshiping community Swainsboro Presbyterian Church.

Silva and his wife, Elman, originally from Brazil, work with families who have experienced religious persecution because of their faith in Jesus Christ.

Many new immigrant worshiping communities serve refugees from countries that do not allow freedom of Christian religious practices.



# Scholarships



Nicky Story

## Grace and Gratitude— Go, Disciple, Live: Theology, Formation, & Evangelism

### *Scholarship helps immigrant son thrive*

Caleb Chincoya-Velasco wouldn't have been able to go to college if it weren't for friends in the Presbytery of Denver, who connected him with the Office of Financial Aid for Service. Thanks to his scholarship, he is now a senior at the Presbyterian-related University of Dubuque.

Chincoya-Velasco, who moved with his mother and uncle to the United States from Mexico when he was six years old, played the drums as a child as part of a Hispanic fellowship's music team. He now shares in his campus ministry's worship leadership.

"The people in our church show love for what God is calling them to do, which is to share opportunities with others," says Chincoya-Velasco.

In 2015, Financial Aid distributed a total of \$938,334 in 356 awards.

For more: [pcusa.org/financialaid](http://pcusa.org/financialaid)

*Caleb Chincoya-Velasco with his guitar after undergraduate chapel at the University of Dubuque*

## *Church educator serves children while meeting life's challenges*

Joshua Archey sees the role of the Christian educator as vital not only to his congregation, First Presbyterian Church in Farmington Hills, Michigan, but also to the larger body of Christ.

Archey's commitment to teaching children that they are unique is reflected in the denomination's new children's curriculum, *Growing in Grace & Gratitude*. Published by Congregational Ministries Publishing, it explores the foundation of Presbyterian identity: God's grace and the responsive gratitude of God's people. It also

offers church leaders support for children with disabilities and special needs by providing ways for all children to participate in activities.

The inclusion aspect is important to Archey for another reason. He has mild cerebral palsy.

"Everyone deserves an equal opportunity," says Archey. "Everybody has challenges; they're just in different forms."

For more: [growinggracegratitude.org](http://growinggracegratitude.org)



Frank Hibbard

*Joshua Archey teaches a morning Bible study class, including Greta and J. T. Gidley.*

# Education

# Vision



Ebenezer Boateng

## **Gift of space and finances for Ghanaian congregation**

Westminster Presbyterian Church in Houston had a problem. Its predominantly Caucasian neighborhood had changed, but the congregation had stayed essentially the same.

Down to 25 worshipers, the congregation decided to go through New Beginnings, a discernment service provided by the Presbyterian Mission Agency.

One of 115 congregations assessed in 2015, Westminster sold its building, rented a storefront, and eventually reassigned its 14-month lease to Redeemer Presbyterian, a Ghanaian worshiping community that had been looking for a building. Westminster also gave what was left in its trust fund (\$350,000) to the Presbytery of New Covenant, to help Redeemer—and other new and struggling communities of faith.

Westminster leaders says they are very satisfied knowing ministry will continue in their neighborhood. The Ghanaians say they will do their best to make sure Westminster’s work wasn’t in vain.

For more: [pcusa.org/newbeginnings](http://pcusa.org/newbeginnings)

*Pastor Ebenezer Boateng presents a child for baptism at Presbyterian Church of the Redeemer in its new storefront worship space.*

## **Man finds his way back to church after 30-year absence**

When Greg Wolford left home in 1983 he stopped going to church. No longer wanting the “fire and brimstone” approach, he began a lifelong quest for faith.

Wolford wasn’t satisfied until he heard Edwin Lacy talking about a new worshiping community, Wild Goose, located in a remote corner of the Appalachians in southwest Virginia.

One of 316 new worshiping communities, Wild Goose received start-up funding (\$7,500) from the

Presbyterian Mission Agency. Lacy also received coaching from the 1001 team, which helped start 72 new worshiping communities in 2015.

Drawn to what Lacy was describing, Wolford drove 55 miles one way to experience church in a new way. Now, in spite of the distance, he rarely misses a service. “Like new grass being sown,” he says, “it needs water,” which is what Wild Goose is giving him.

For more: [onethousandone.org](http://onethousandone.org)

# Faith



*Worship at Wild Goose includes rocking chairs and banjos.*

Edwin Lacy

### Reaching youth who are bullied

Calvin Rogers, 25, divides his life into two time periods: before Presbyterian Youth Triennium and after.

Before Triennium, Rogers was in despair. He says he was constantly being bullied. But then, in 2007, Rogers went to Triennium, a massive conference drawing upwards of 5,000 youth for worship, community building, and mission. The experience was like receiving “700 hugs a day,” he says. It got him excited about God.

Back home, the bullying continued, but the love he’d received gave him a different perspective. Noticing the difference, kids who’d made fun of Rogers began asking for his forgiveness. Motivated to share his story, Rogers started his own youth conference. More than 700 kids came.

Rogers, who plans, he says, on going to every Triennium “until I die,” is on the 2016 production team—which began planning for the event in 2015 with help from the Presbyterian Mission Agency’s office of Ministries with Youth.

For more: [presbyterianyouthtriennium.org](http://presbyterianyouthtriennium.org)

## Grace



Team building moment at a planning gathering for the 2016 Presbyterian Youth Triennium

Andrew Yeager-Buckley

### Lifetime of change:

#### Youth and young adult ministries

##### Young Adult Volunteer program growing

Presbyterian World Mission’s Young Adult Volunteer experience continues to grow, with new national and expanding international sites. In 2015, 85 young adults, between 19 and 30, committed to a year of service for a lifetime of change. While living in intentional community and deepening their faith, they began to address critical global initiatives, including poverty alleviation, reconciliation in cultures of violence, and sharing the good news of Jesus Christ.

New York City is hosting a YAV community for the first time. A new site in Asheville, North Carolina, is empowering YAVs to serve the city’s homeless community. The YAV program expanded internationally as well, with four YAVs in Northern Ireland and four in Scotland.

For more: [pcusa.org/yav](http://pcusa.org/yav)

*Hanbyeol Nam, a Young Adult Volunteer from South Korea, is one of the first Korean YAVs serving in the Community Home Repair Project in Tucson, Arizona.*

## Service



Dustin Schaber



Grace Presbytery

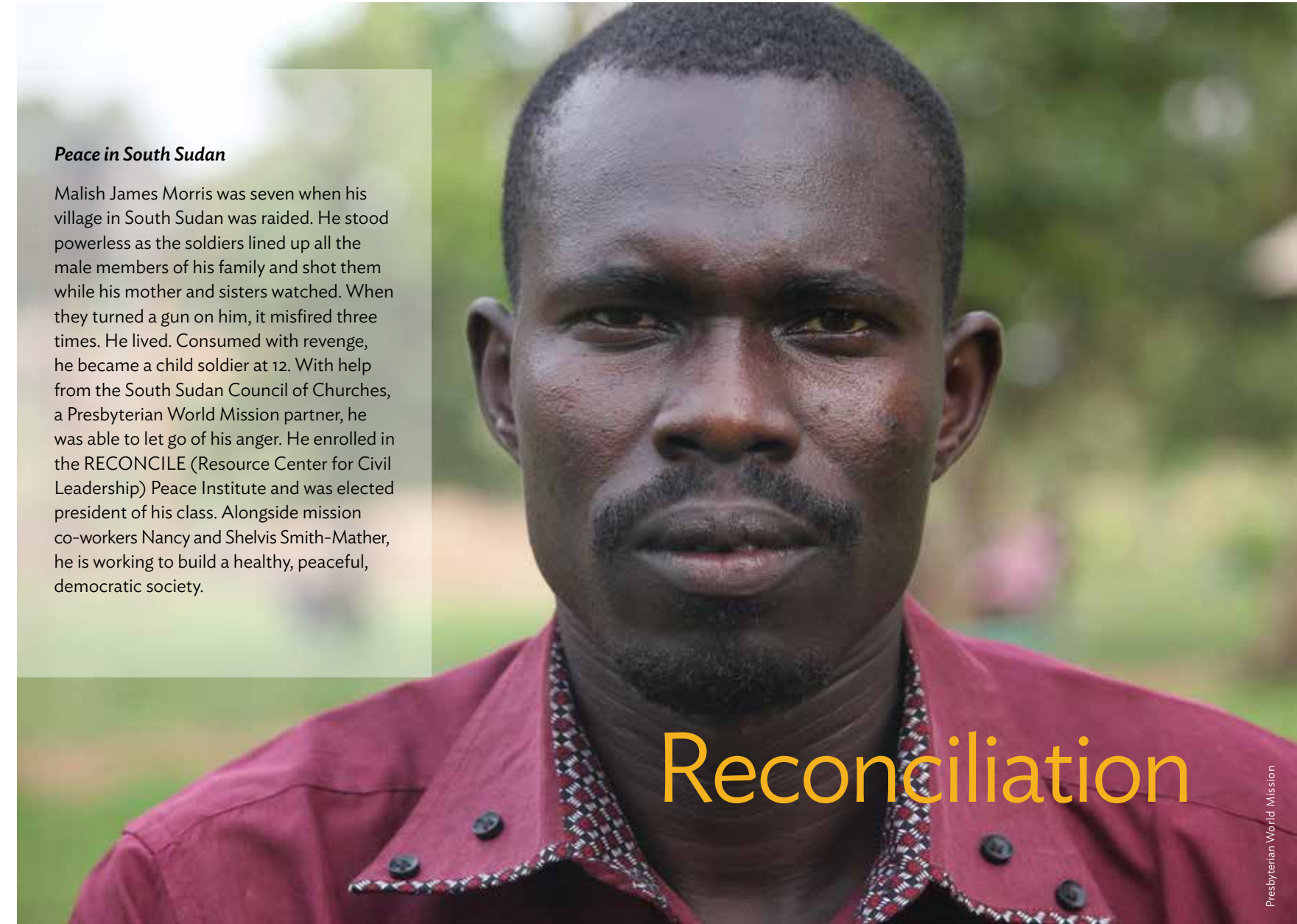
# Solidarity

## God's Faithfulness Endures: World Mission

### *Standing with our mission co-workers*

Presbyterians have responded in unique and creative ways to keep mission co-workers in service around the world after Presbyterian World Mission announced a major funding shortfall in April that could force the recall of 40 mission co-workers. A gift from Grace Presbytery in central and northeast Texas will fund in perpetuity half the cost of two mission co-workers and fully fund 20 Young Adult Volunteer scholarships, totaling \$2.85 million. Inspired by their mission relationships in Peru, Malawi, and Congo, Broad Street Presbyterian Church in Columbus, Ohio, raised \$10,376. Myers Park Presbyterian Church in Charlotte, North Carolina, voted to send \$100,000 in support. Randy Webb, interim executive presbyter of Abingdon Presbytery, challenged every church in the presbytery to support a mission co-worker, driving to each church in his RV and camping in the parking lot.

*Grace Presbytery snaps a joyous photo after pledging a sizable gift to Presbyterian World Mission.*



Presbyterian World Mission

### *Peace in South Sudan*

Malish James Morris was seven when his village in South Sudan was raided. He stood powerless as the soldiers lined up all the male members of his family and shot them while his mother and sisters watched. When they turned a gun on him, it misfired three times. He lived. Consumed with revenge, he became a child soldier at 12. With help from the South Sudan Council of Churches, a Presbyterian World Mission partner, he was able to let go of his anger. He enrolled in the RECONCILE (Resource Center for Civil Leadership) Peace Institute and was elected president of his class. Alongside mission co-workers Nancy and Shelvis Smith-Mather, he is working to build a healthy, peaceful, democratic society.

# Reconciliation

*Malish James Morris, a former child soldier and a South Sudan Education and Peacebuilding Project scholarship recipient, became president of the 2015 RECONCILE Peace Institute student body.*



Graduates of Evangelical Theological Seminary in Cairo

ETSC

**Unprecedented growth in Egypt**

Because of Egypt's revolution in January 2011, there is an unprecedented openness to the church's role in Egyptian society. So much so that the Egyptian government has given land to the Evangelical Presbyterian Church to build 14 new churches and has made the process to obtain building permits much simpler. For legal, cultural, and security reasons, worshiping communities cannot meet or function outside a church building.

In addition, the Evangelical Theological Seminary in Cairo is working to train pastors to serve congregations in Egypt and around the world. Jim Davis, a member of Miami Shores Presbyterian Church in Florida, gave \$1 million to get the project started immediately.

For more: [pcusa.org/egypt](http://pcusa.org/egypt)

# Evangelism



Children in a schoolhouse in Zambia, supported by Presbyterian World Mission

Presbyterian World Mission

**Mission co-workers called to serve**

Three mission co-worker couples prepared to enter service in 2015. David Cortez-Fuentes and Josefina Saez-Acevedo are the first Presbyterian mission co-workers living and working in Cuba since the 1959 revolution. Although the Presbyterian Church (U.S.A.) has ties to Cuba that began with ministry in Havana in 1890, all but one Presbyterian missionary left Cuba after the revolution. Cortez-Fuentes is teaching New Testament and Greek at the Evangelical

Theological Seminary in Matanzas, and Saez-Acevedo is assisting the Cuban church's Christian education ministries. Elsewhere in the world, in Southeast Asia, Cathy Chang and Juan-Carlos Lopez Carrasco are addressing human trafficking issues, while Charles and Melissa Johnson are working on community development and food security issues in Zambia.

For more: [pcusa.org/missionconnections](http://pcusa.org/missionconnections)

# Calling

## Harbingers of Hope: Funds Development

### Generous Presbyterians demonstrate mission commitment

Amid changing funding patterns and the choppy waters of contemporary denominational life, Presbyterians continued to bear witness to their faith through generous giving.

While financial challenges remain, Presbyterian generosity last year gave testimony to the mission commitment of Presbyterians. Individuals, congregations, and presbyteries

responded to a financial shortfall in World Mission with imaginative fund-raising and openhanded giving. Scores of Presbyterians became “Pillars of the Church” through a new sustained-giving opportunity for the Presbyterian Mission Agency. Special Offering ambassadors across the country volunteered their time to urge support for the four churchwide offerings.

Thousands of Presbyterians are expressing support for their church’s mission through giving and praying. While budgetary challenges are not easily solved, generous Presbyterians are demonstrating that the flame of mission commitment is not easily extinguished.

For more: [pcusa.org/give](http://pcusa.org/give)



Drawing more than 5,000 young people, Presbyterian Youth Triennium is one of many causes supported by the Pentecost Offering.

### Gifts of every size

A modest gift came to the Presbyterian Mission Agency in 2015 from a widow who apologized for her inability to give more to her church’s worldwide mission.

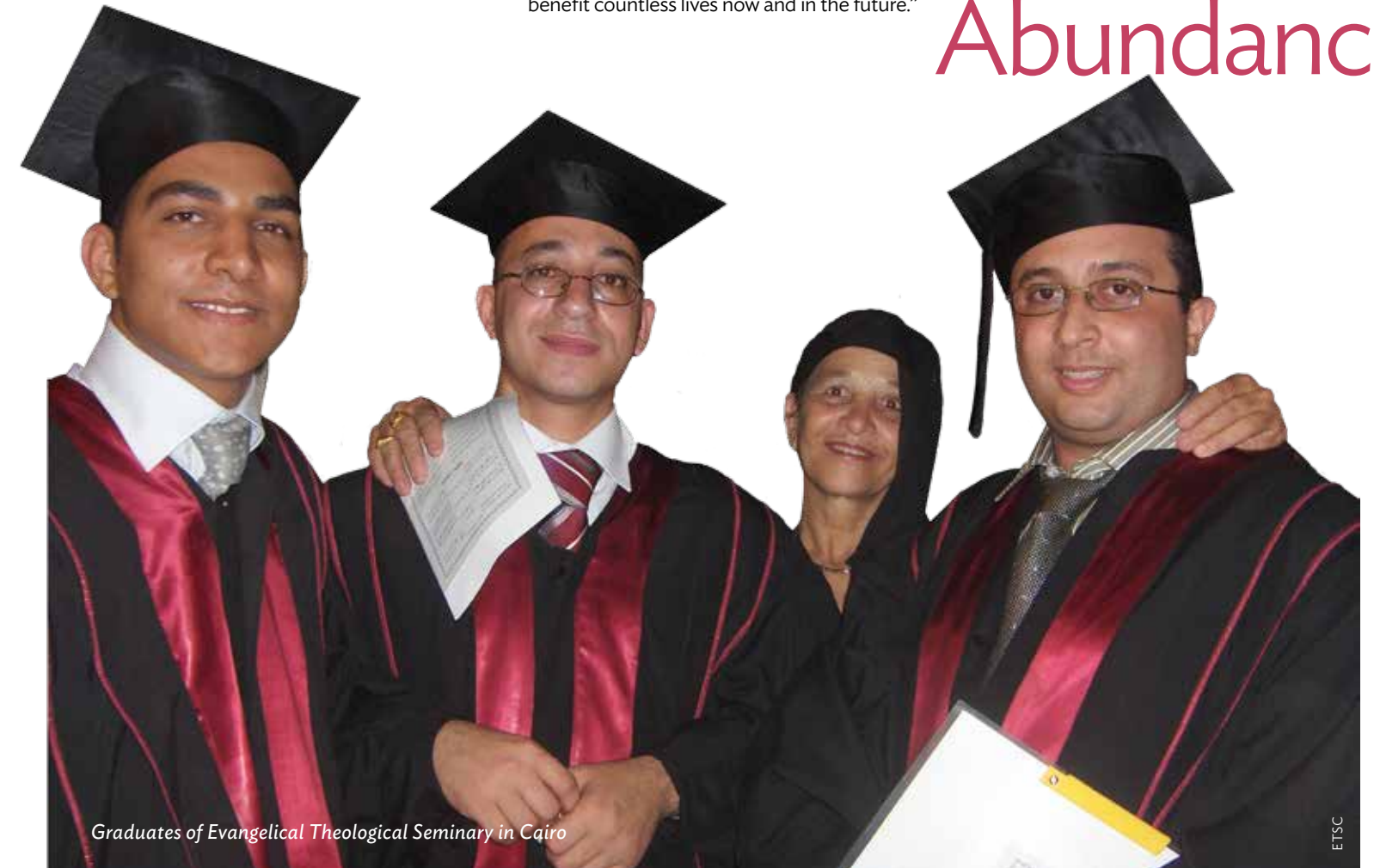
Just days later, a \$1 million gift arrived from Florida Presbyterian Jim Davis to support

theological education, church construction, and mission co-workers in Egypt.

“We gave thanks to God for these two gifts, as their juxtaposition reminded us that gifts of all sizes matter,” says Terri Bate, senior director of Funds Development. “Both support ministries that will benefit countless lives now and in the future.”

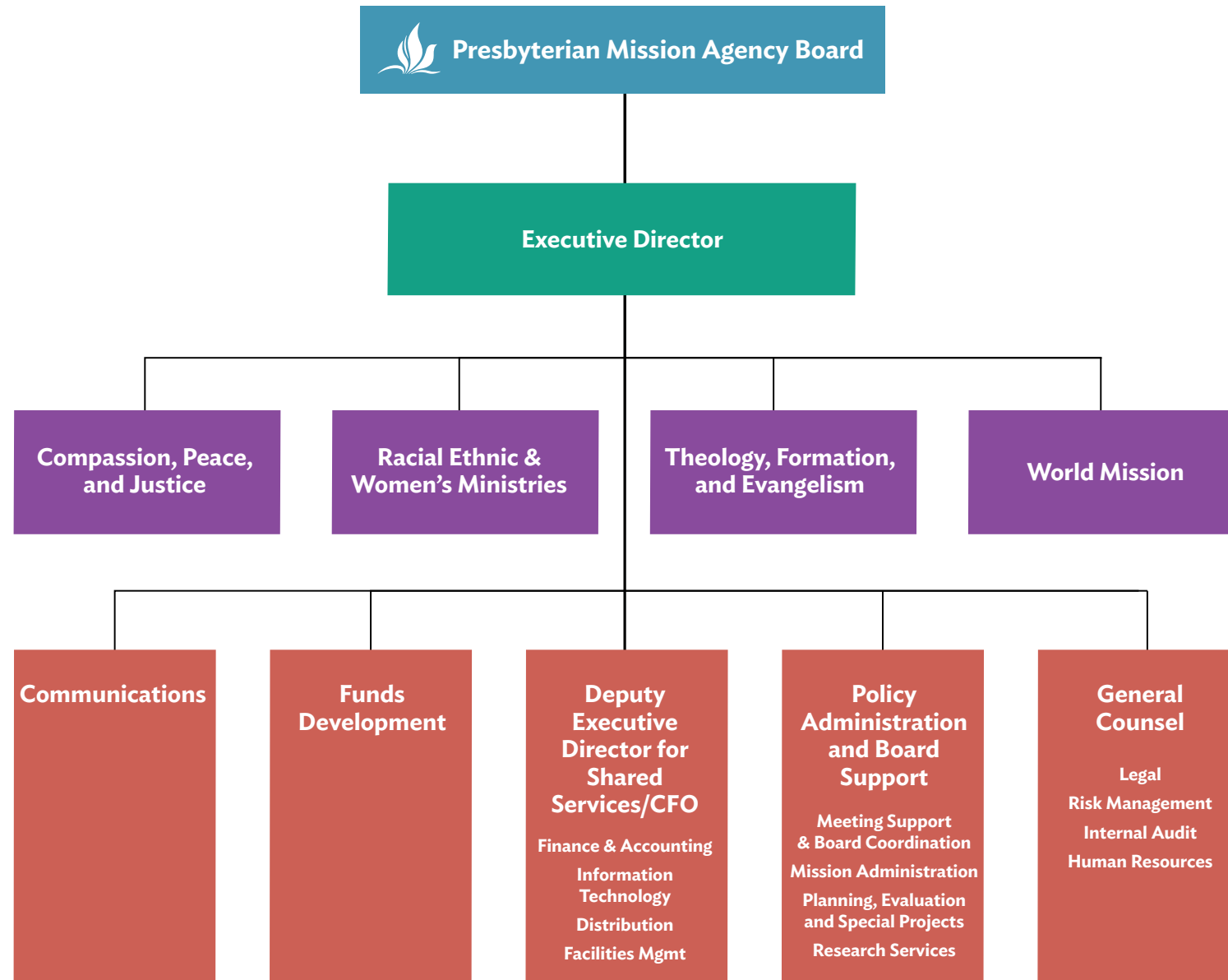
Presbyterian mission giving brings to mind the boy who brought Jesus five loaves and two fish, Bate says. Jesus blessed the offering, and 5,000 people were fed. Jesus still blesses gifts given for the gospel’s sake. Such gifts work together for the physical and spiritual nourishment of the world.

## Abundance



Graduates of Evangelical Theological Seminary in Cairo

## Presbyterian Mission Agency Organizational Chart



## Presbyterian Mission Agency Board Members as of March 2016

**Marilyn S. Gamm**, Chair  
**Josephene D. Stewart**, Vice Chair  
**Heath K. Rada**, Moderator of the 221st General Assembly (2014)

**Executive Committee**  
 Marsha Z. Anson  
 Tony De La Rosa, (ex officio)  
 James R. Ephraim Jr.  
 Marilyn S. Gamm (c)  
 Chad A. Herring  
 Rachel "Mihee" Kim-Kort  
 Melinda Lawrence Sanders  
 David W. Shinn  
 Josephene D. Stewart (vc)

**Finance Committee**  
 Mary C. Baskin  
 Marvin Brangan  
 Thomas O. Fleming Jr. (vc)  
 Kenneth H. Godshall  
 Chad A. Herring (c)  
 Jeffrey C. Joe  
 Alice Ridgill  
 Melinda Lawrence Sanders  
 Raul Felipe Santiago-Rivera (at large)  
 Glen E. Snider  
 Wendy S. Tajima  
 Kathryn Trott (at large)

**Justice Committee**  
 Cecil E. Corbett  
 James R. Ephraim Jr. (c)  
 James E. Foucher Jr.  
 Lindsay Harren-Lewis  
 Joseph L. Morrow  
 Susan H. Osoinach (vc)  
 Kears K. Pollock  
 Noelle Royer  
 Kathy M. Terpstra  
 Carol Winkler

**Leadership Committee**  
 Mark S. Brainerd  
 Harold M. Delhagen  
 Marcella "Marci" Auld Glass  
 Rafael A. Medina  
 Neal D. Presa  
 Nancy J. Ramsay (c)  
 Shannan Vance Ocampo  
 Landon Whitsitt

**Worshiping Communities Committee**  
 Marsha Z. Anson (vc)  
 Andrew N. Barron  
 Gregory L. Chan  
 David E. Ezekiel  
 Vicki T. Garber  
 Rachel "Mihee" Kim-Kort  
 Regina Meester  
 Marianne O. Rhebergen  
 David W. Shinn (c)  
 Patsy R. Smith

**Audit Committee**  
 Mary C. Baskin (vc)  
 Ellen P. Cason (at large)  
 Thomas O. Fleming Jr.  
 Eileen Lindner (COGA rep.)  
 Kears K. Pollock (c)  
 Richard A. Turpen (at large)

**Corresponding Members**  
 Adlai Amor, Presbyterian Publishing Corporation  
 COTE Representative  
 Tony De La Rosa, Presbyterian Mission Agency  
 John Hamm, Board of Pensions  
 Marilee Hopkins, Presbyterian Foundation  
 Margaret H. Jorgensen, Presbyterian Investment and Loan Program  
 Marc Lewis, Presbyterian Publishing Corporation  
 Eileen Lindner, Committee on the Office of the General Assembly (COGA)  
 Gradye M. Parsons, Office of the General Assembly

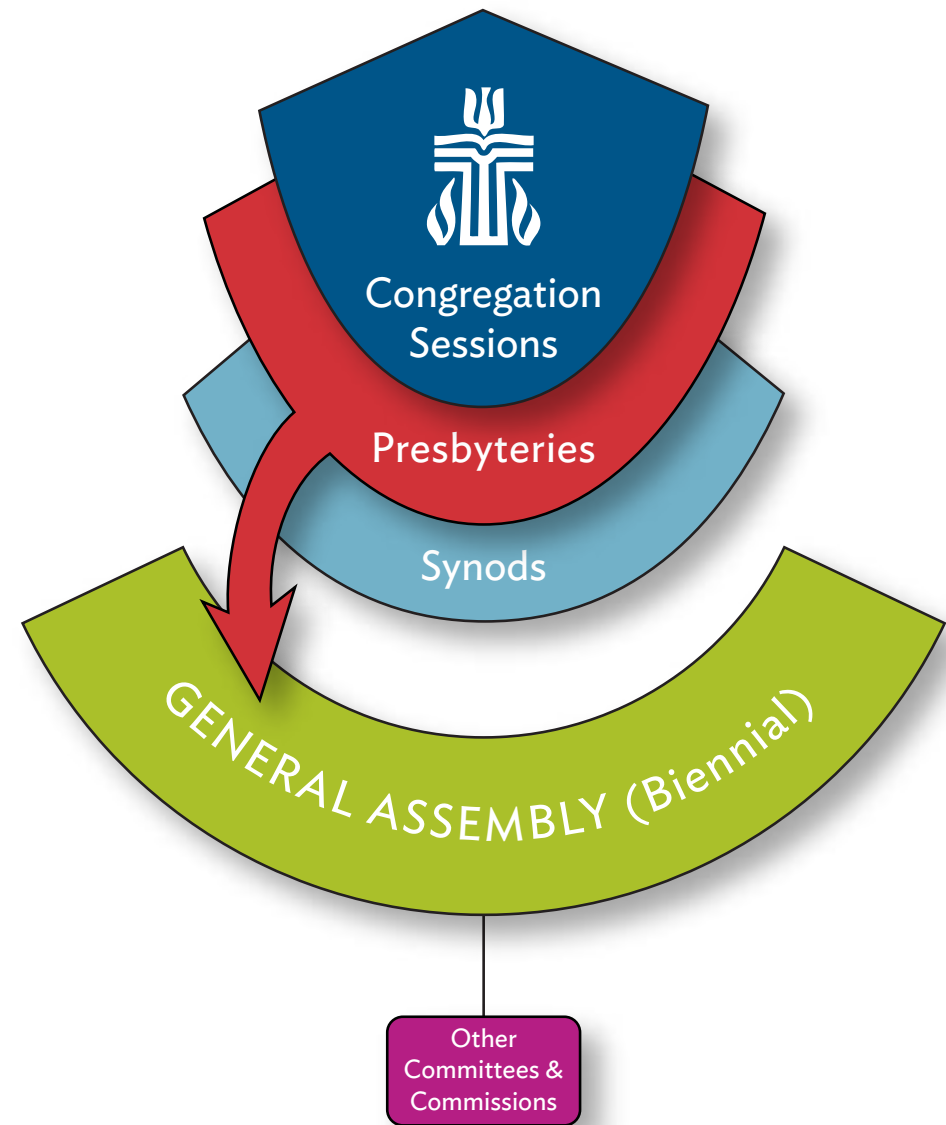
James Rissler, Presbyterian Investment and Loan Program  
 Ray Roberts, Advisory Committee on Social Witness Policy  
 Frank C. Spencer, Board of Pensions  
 Thomas F. Taylor, Presbyterian Foundation  
 Floretta Watkins, Advocacy Committee for Women's Concerns  
 Raafat L. Zaki, Advocacy Committee for Racial Ethnic Concerns

(c) Chair; (vc) Vice Chair

*With gratitude for their service and ministry, we acknowledge the following board members who also served in 2015:*

Mary C. Jorgenson  
 Corey Schlosser-Hall  
 Linda B. Valentine  
 Kevin R. Yoho

## Presbyterian Church (U.S.A.) Organizational Chart



### Board of Pensions

[pensions.org](http://pensions.org)

The Board of Pensions upholds the promise of pension and medical benefits made to teaching elders. It serves those who serve the church, administering benefits and providing financial assistance and vocational training. Board University provides educational resources to help Benefits Plan members make the most of their finances, benefits, and retirement and to assist their employers in advising them. The Board serves about 54,000 church workers, retired church workers, and family members. As of December 31, 2015, it was managing investments of \$9 billion. In 2015, the Pension Plan collected \$66 million in dues and paid out \$346 million in benefits. The Medical Plan paid \$153 million in benefits and expenses and collected \$185 million in dues/contributions. More than 1,294 assistance grants, totaling \$5 million, were awarded. The Board committed \$4.8 million in housing supplements for residents of El Sombroso Oaks, the last remaining Board-owned retirement housing, sold in 2015.

### Office of the General Assembly

[oga.pcusa.org](http://oga.pcusa.org)

Empowered by the Holy Spirit, the Office of the General Assembly encourages the Presbyterian Church (U.S.A.) to be a people of hope—seeking together the mind of Christ, working for justice and mercy in the world, and participating in God’s continual reformation of the church. Under the leadership of the stated clerk, OGA serves as the denomination’s ecclesiastical arm, offering support for the church’s governance and structure. It carries out its mission through three primary ministry areas: Churchwide Ministries, Ecclesial and Ecumenical Ministries, and Mid Council Ministries.

### Presbyterian Foundation

[presbyterianfoundation.org](http://presbyterianfoundation.org)

The Presbyterian Foundation was established in 1799 to gather, steward, and distribute funds for mission. The Foundation is committed to strengthening congregations, mid councils, and other church entities by developing gifts and managing funds on their behalf and working with them to build communities of generosity. We provide all Presbyterians an avenue to realize their philanthropic goals through a variety of giving options and maintain a strong focus on the Reformed values that guide our stewardship and investment. The Foundation raised more than \$53 million in new gifts and investments in 2015. Through the generosity of faithful Presbyterians, more than \$300 million has been made available over the past five years for the work and mission of the church.

### Presbyterian Investment and Loan

[pilp.pcusa.org](http://pilp.pcusa.org)

The Presbyterian Investment and Loan Program provides low-cost loans to Presbyterian churches and entities that are building, expanding, remodeling, or reshaping ministry space. Funds come from PC(USA) endowments plus investments from members, churches, and church governing bodies. Investors participate by purchasing interest-bearing term notes. PILP uses these investments to make loans to churches for capital projects. The churches repay the loans with interest, some of which goes back to investors. The remainder covers PILP’s operating costs and provides capital to fund more loans.

### Presbyterian Mission Agency

[presbyterianmission.org](http://presbyterianmission.org)

The Presbyterian Mission Agency is the mission and ministry arm of the Presbyterian Church (U.S.A.). Guided by the Spirit, the agency inspires, equips, and connects the PC(USA) and its many expressions to serve Christ in the world through new and existing communities of faith, hope, love, and witness. In very real and practical ways, the Presbyterian Mission Agency lives into its vision of joyfully engaging in God’s mission for the transformation of the world through the work of the agency’s four ministry areas: Compassion, Peace, and Justice; Racial Ethnic & Women’s Ministries; Theology, Formation, and Evangelism; and World Mission.

### Presbyterian Publishing Corporation

[ppcbooks.com](http://ppcbooks.com)

Building on the Reformed tradition, the Presbyterian Publishing Corporation seeks to glorify God by contributing to the spiritual and intellectual vitality of Christ’s church. The Presbyterian Publishing Corporation publishes resources that advance religious scholarship, stimulate conversation about moral values, and inspire faithful living. PPC publishes under two main imprints, Westminster John Knox Press and Geneva Press, and sells books online to Presbyterians and a broader ecumenical audience through [TheThoughtfulChristian.com](http://TheThoughtfulChristian.com) and [pcusastore.com](http://pcusastore.com). PPC is also the publisher of *Glory to God*, the denominational hymnal. PPC releases approximately 60 new titles each year and has a backlist of more than 2,000 titles.





**Introduction to Financial Data**

In 2015, about \$72 million was generated for mission and ministry under the stewardship of the Presbyterian Mission Agency.

For the past decade, both restricted and unrestricted receipts have continued a downward trend. In response to these trends, the Presbyterian Mission Agency has reduced or reconfigured staff and programs to closely match expenses with available revenue and is undertaking increased funds-development efforts.

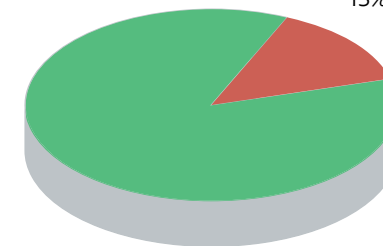
The charts and graphs on the pages that follow provide greater detail about the sources and uses of funds for each ministry area. This information is provided as part of our commitment to be accountable, transparent, and responsible stewards of the funds entrusted to us for the mission and ministry work of the whole church.

**The Stewardship of Mission Funds**

According to our audited 2015 financial statements, the Presbyterian Mission Agency’s operating expenses by functional classification for 2015 are as follows:

Program expenses	87%
Management and general expenses	7%
Fundraising expenses	6%
<b>Total</b>	<b>100%</b>

PROGRAM WORK 87%  
MANAGEMENT, GENERAL, AND FUNDRAISING 13%

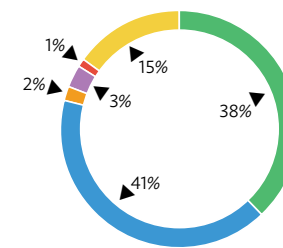


**Independent Auditor’s Opinion**

The full set of audited financial statements and notes is available at [pcusa.org/financials](http://pcusa.org/financials). Crowe Horwath LLP has expressed an unqualified opinion on the consolidated financial statements of the Presbyterian Church (U.S.A.), A Corporation, as of December 31, 2015, and for the year then ended.

### Compassion, Peace, and Justice

▼ Uses of Funds	Sources of Funds ►	(\$ Thousands)			
		Unrestricted	Restricted	Per Capita	Total
Compassion Ministries			6,919		6,919
Peace Ministries		726	423		1,148
Justice Ministries		402	2,274		2,676
Administrative and Common Expenses		609	3,504		4,113
<b>Total</b>		<b>1,737</b>	<b>13,120</b>		<b>14,856</b>

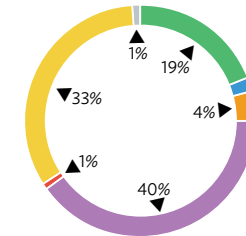


### Compassion, Peace, and Justice

- Churchwide Special Offerings
- Other Specific Appeals
- Additional Forms of Giving
- Interest and Dividends
- Events, Services, and Sales
- Unrestricted

### Racial Ethnic & Women's Ministries

▼ Uses of Funds	Sources of Funds ►	(\$ Thousands)			
		Unrestricted	Restricted	Per Capita	Total
Racial Ethnic and New Immigrant Ministries		533	111		644
Racial Ethnic Leadership			3,822		3,822
Women's Leadership Development and Justice Ministries		889	368	75	1,332
Administrative and Common Expenses		726	1,036		1,763
<b>Total</b>		<b>2,148</b>	<b>5,337</b>	<b>75</b>	<b>7,560</b>

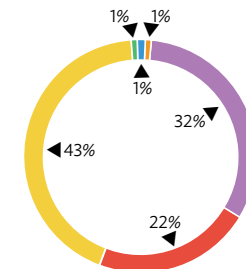


### Racial Ethnic & Women's Ministries

- Churchwide Special Offerings
- Other Specific Appeals
- Additional Forms of Giving
- Interest and Dividends
- Events, Services, and Sales
- Unrestricted
- Per Capita

### Theology, Formation, and Evangelism

▼ Uses of Funds	Sources of Funds ►	(\$ Thousands)			
		Unrestricted	Restricted	Per Capita	Total
Theology and Worship		481	1,352		1,833
Theological Education		132			132
Congregational Ministries Publishing		300	1,654		1,955
Interfaith Relations		6	47		53
Evangelism Ministries		664	571		1,234
Church Growth Ministries		275	1,130		1,405
Administrative and Common Expenses		1,840	2,019	20	3,879
<b>Total</b>		<b>3,699</b>	<b>6,772</b>	<b>20</b>	<b>10,491</b>

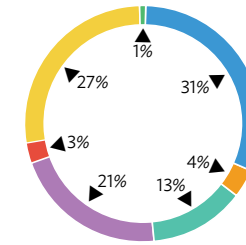


### Theology, Formation, and Evangelism

- Churchwide Special Offerings
- Other Specific Appeals
- Additional Forms of Giving
- Interest and Dividends
- Events, Services, and Sales
- Unrestricted

## World Mission

▼ Uses of Funds	Sources of Funds ►	(\$ Thousands)			
		Unrestricted	Restricted	Per Capita	Total
Mission Personnel		1,116	9,143		10,259
Mission Partners and Programs		754	4,098		4,852
Global Discipleship		857	715		1,572
Critical Global Issues		24	560		584
Administrative and Common Expenses		2,741	3,951		6,692
Total		5,492	18,467		23,958

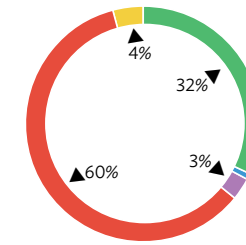


## World Mission

- Churchwide Special Offerings
- Other Specific Appeals
- Additional Forms of Giving
- Directed Mission Support
- Interest and Dividends
- Events, Services, and Sales
- Unrestricted

## Communications and Funds Development

▼ Uses of Funds	Sources of Funds ►	(\$ Thousands)			
		Unrestricted	Restricted	Per Capita	Total
Communications		957	2,403		3,360
Funds Development		732	4,267	2	5,001
Administrative and Common Expenses		(1,437)	(5,332)		(6,769)
Total		252	1,337	2	1,592

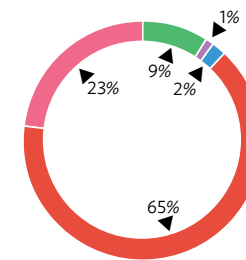


## Communications and Funds Development

- Churchwide Special Offerings
- Other Specific Appeals
- Interest and Dividends
- Events, Services, and Sales
- Unrestricted

## Shared Services

▼ Uses of Funds	Sources of Funds ►	(\$ Thousands)			
		Unrestricted	Restricted	Per Capita	Total
Finance and Accounting		481	1,558	841	2,881
Information Technology		741	903	253	1,897
Presbyterian Distribution Service		239	1,292	233	1,765
Mail & Print Services and Building Services		571	1,243	193	2,007
Administrative and Common Expenses		(2,032)	(3,039)		(5,071)
Total		0	1,958	1,520	3,478



## Shared Services

- Churchwide Special Offerings
- Interest and Dividends
- Other
- Events, Services, and Sales
- Per Capita

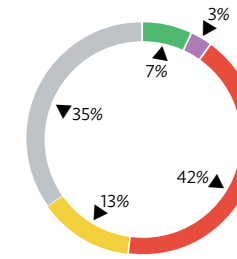
## Executive Director's Office

(\$ Thousands)

▼ Uses of Funds	Sources of Funds ►	Unrestricted	Restricted	Per Capita	Total
Policy Administration and Board Support		290	572	373	1,235
Executive Director's Office			190	392	582
Presbyterian Mission Agency Board Meetings				168	168
General Assembly and Presbyterian Mission Agency Related				53	53
General Counsel		430	1,531	308	2,269
Mid Council Relations				195	195
Common Expenses		(141)	(618)		(759)
<b>Total</b>		<b>579</b>	<b>1,676</b>	<b>1,489</b>	<b>3,744</b>

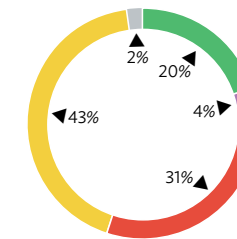
## Other

▼ Uses of Funds	Sources of Funds ►	Unrestricted	Restricted	Per Capita	Total
Shared Expenses		3,400	472	103	3,975
Insurance		217	1,707		1,924
Restricted Fund Allocation			245		245
Investment Management Fees		66	101	38	204
Board of Pensions			1,222		1,222
National Mission Partnership Funds			10		10
Administrative and Common Expenses		(713)	(519)		(1,232)
<b>Total</b>		<b>2,971</b>	<b>3,236</b>	<b>140</b>	<b>6,347</b>



## Executive Director's Office

- Churchwide Special Offerings
- Interest and Dividends
- Events, Services, and Sales
- Unrestricted
- Per Capita



## Other

- Churchwide Special Offerings
- Interest and Dividends
- Events, Services, and Sales
- Unrestricted
- Per Capita

Presbyterian Mission Agency | 2015 Actual Sources of Funds

(\$ Thousands)

	Unrestricted	Restricted	Per Capita	Total
<b>Basic Mission Support</b>	<b>5,747</b>	<b>4,171</b>		<b>9,918</b>
Shared Mission Support	5,747			5,747
Directed Mission Support		4,171		4,171
<b>Churchwide Special Offerings</b>		<b>11,416</b>		<b>11,416</b>
Christmas Joy Offering		3,271		3,271
One Great Hour of Sharing Offering		5,999		5,999
Peace and Global Witness/Peacemaking Offering		873		873
Special Offering Catalogs		616		616
Pentecost Offering		657		657
Witness Offering		2		2
<b>Other Specific Appeals</b>		<b>14,428</b>		<b>14,428</b>
Emergency and Disaster Relief		4,290		4,290
Extra Commitment Opportunities (ECO)		9,070		9,070
Special Missionary Support		639		639
Hunger		429		429
<b>Additional Forms of Giving</b>	<b>203</b>	<b>651</b>		<b>854</b>
Presbyterian Women		346		346
Bequests and Annuities	203	81		284
Other Gifts		98		98
Grants from Outside Foundations		125		125
<b>Endowments and Interest &amp; Dividends</b>	<b>7,321</b>	<b>9,733</b>		<b>17,053</b>
PC(USA) Endowment Funds	5,255	8,112		13,367
Presbyterian Mission Program Fund	39	192		231
Outside Trusts	1,685	80		1,765
Jinishian Fund		1,252		1,252
Short-Term Investments	341	98		439

Presbyterian Mission Agency | 2015 Actual Sources of Funds

(\$ Thousands)

	Unrestricted	Restricted	Per Capita	Total
<b>Events, Services and Sales</b>	<b>79</b>	<b>18,396</b>		<b>18,475</b>
Hubbard Press	75	156		231
Sales: Curriculum		1,893		1,893
Sales: Program Services		14,554		14,554
Sales: Resources	4	1,791		1,796
Other Income		2		2
<b>Total Receipts</b>	<b>13,350</b>	<b>58,795</b>		<b>72,145</b>
Prior-Year Accumulations	3,527	(6,892)		(3,365)
<b>2015 Per Capita</b>			<b>3,247</b>	
<b>Total Sources of Funding</b>	<b>16,877</b>	<b>51,903</b>	<b>3,247</b>	<b>72,027</b>

Presbyterian Mission Agency | 2015 Actual Expenditures by Entity

(\$ Thousands)

	Unrestricted	Restricted	Per Capita	Total
<b>Executive Director's Office</b>	<b>579</b>	<b>1,676</b>	<b>1,489</b>	<b>3,744</b>
<b>Communications and Funds Development</b>	<b>252</b>	<b>1,337</b>	<b>2</b>	<b>1,592</b>
<b>Mission</b>	<b>13,075</b>	<b>43,696</b>	<b>95</b>	<b>56,865</b>
Compassion, Peace, and Justice	1,737	13,120		14,856
Racial Ethnic & Women's Ministries	2,148	5,337	75	7,560
Theology, Formation, and Evangelism	3,699	6,772	20	10,491
World Mission	5,492	18,467		23,958
<b>Shared Services</b>		<b>1,958</b>	<b>1,520</b>	<b>3,478</b>
<b>Other</b>	<b>2,971</b>	<b>3,236</b>	<b>140</b>	<b>6,347</b>
<b>Total Expenditures</b>	<b>16,877</b>	<b>51,903</b>	<b>3,247</b>	<b>72,027</b>

## Funding Presbyterian Mission

**Mission funding** comes from many sources. Gifts that support the church's work fund general and specific mission.

### Unrestricted Funds

Unrestricted funds, about 18% of our funding, demonstrate our connection as Presbyterians and provide resources for the church to be a collective witness to Christ. Sources of unrestricted funds include Shared Mission Support, endowments, interest and dividends, and bequests and annuities.

### Restricted Funds

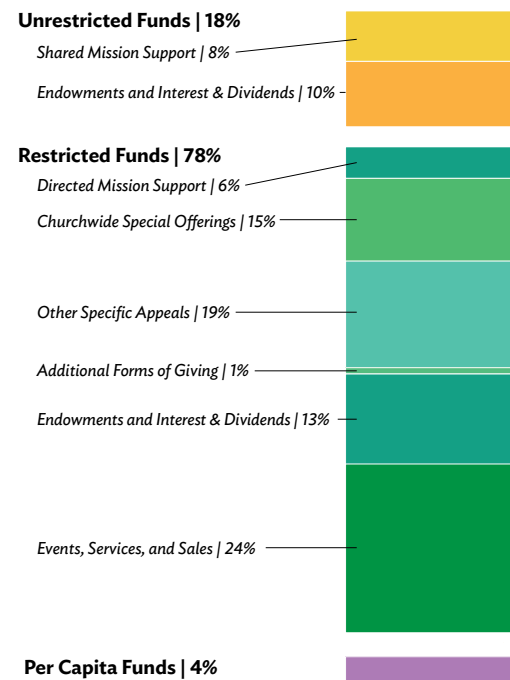
Restricted funds, about 78% of our funding, celebrate the particular

commitments to mission made by members and congregations as God calls them. Sources of restricted funds include Directed Mission Support, churchwide special offerings, other specific appeals (such as those for Presbyterian Disaster Assistance and extra commitment opportunities), endowments, bequests, and sales of resources and services.

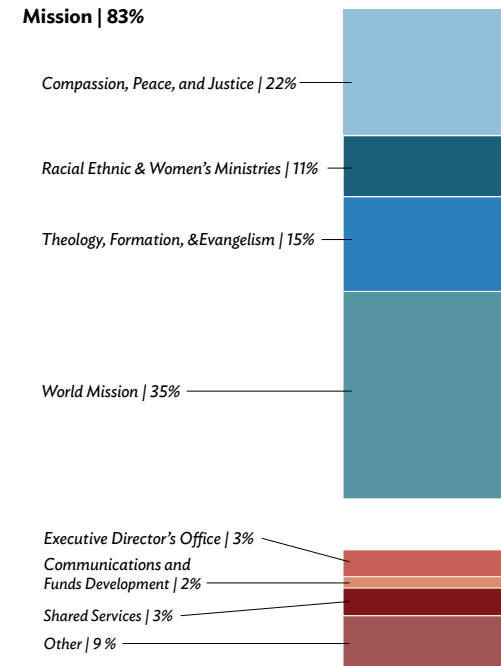
### Per Capita Funds

Per capita funds, about 4% of the Presbyterian Mission Agency budget, are used for Presbyterian Mission Agency Board meetings, the Executive Director's office, and other Presbyterian Mission Agency coordination; the office of Mid Council Relations (which is shared with the Office of the General Assembly); and advocacy and advisory committees.

### How Presbyterian Mission is funded



### How your funds are used





100 Witherspoon Street  
Louisville, KY 40202-1396  
[presbyterianmission.org](http://presbyterianmission.org)

To request additional copies of this annual report,  
contact Debbie Gardiner at 800-728-7228 x5988  
or [debbie.gardiner@pcusa.org](mailto:debbie.gardiner@pcusa.org).



[Facebook.com/pcusa](https://www.facebook.com/pcusa)



[Twitter.com/presbyterian](https://twitter.com/presbyterian)



[YouTube.com/presbyterianchurch](https://www.youtube.com/presbyterianchurch)

