

**& PRESBYTERIAN CHURCHES  
SOLAR ENERGY**



*Resource from the Presbyterian Hunger Program  
pcusa.org/solar*

TRINITY PRESBYTERIAN CHURCH, SANTA CRUZ, CA



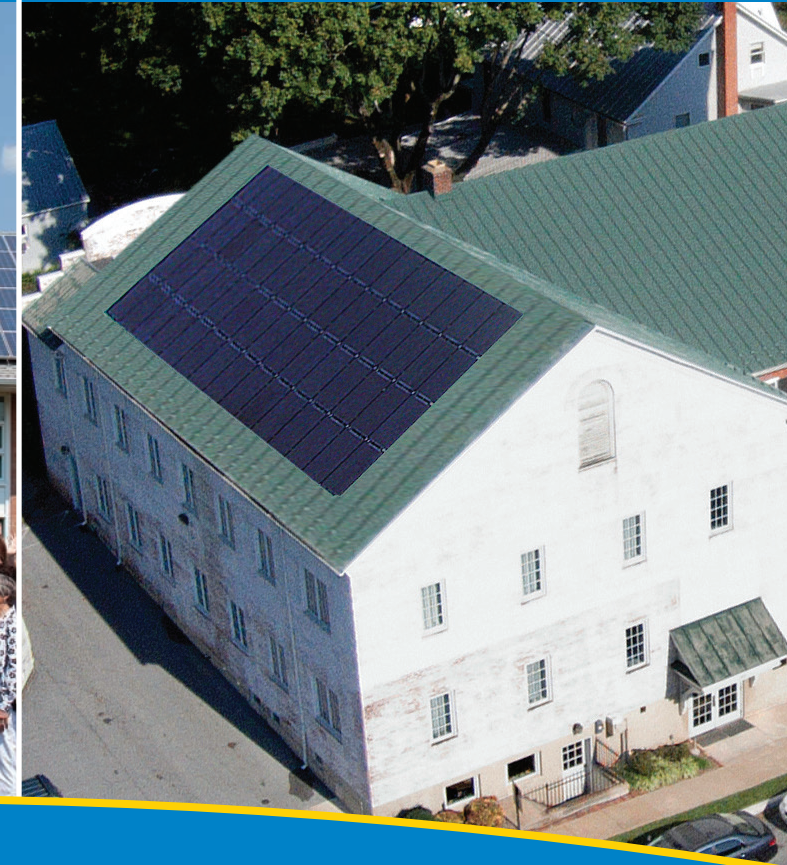
40 panels provide 98% electrical need. 10 year loan from the Synod of the Pacific, with payment roughly equal to previous electrical utility bill.

SOLAR DEDICATION, LIMESTONE PRESBYTERIAN CHURCH, WILMINGTON, DE



180 panels eliminate 90,000 lbs CO2 and save \$6,500 in annual energy costs. Financed through state rebates, community donations and PILP loan. Paid for itself within a decade, produces income through Renewable Energy Credit, and brings in new members.

SHEPHERDSTOWN PRESBYTERIAN CHURCH (WV)



60 panels cover 45% electrical need. 85 households participated in crowdsource fundraising, through a water heater project in households throughout the community.





## FACTORS TO CONSIDER:

**ENERGY EFFICIENCY:** Optimize your physical plant BEFORE considering solar. Decreasing energy demand means a smaller, less costly solar array.

**FAITH:** God's covenant extends to all creation and we are called to love our neighbors and care for "the least of these." Discuss in your church if and how solar power may be a faithful response to God's call.

**EVANGELISM:** Some churches have found that solar panels attract young adults and families to their congregation because they are a visible and intriguing witness of Christian discipleship.

**FINANCES:** Research options for your location, such as capital campaign/budget, state/presbytery or Presbyterian Investment and Loan Program loans (new in 2015!), leasing, crowdsourcing, renewable energy credits, or others.

**HARDWARE:** Decide size of array (kWh, number of panels, percentage of energy demand covered); aesthetics (some churches want it hidden, some want to show it off!); who will install (a contractor or church volunteers).

## FOR MORE INFORMATION

- Resources available from Presbyterian Hunger Program's Environmental Ministries at: [pcusa.org/solar](http://pcusa.org/solar)

## CONSIDER, ALSO:

- Certified PC(USA) Earth Care Congregations
- Eco-Palms
- Presbyterian Coffee Project
- Fair Trade
- Joining Hands

All available through [www.pcusa.org/hunger](http://www.pcusa.org/hunger)

*Light is sweet, and it is pleasant for the eyes to see the sun.*  
(Ecclesiastes 11:7)

Printed on FSC certified paper



Solar panels provide 60% energy demand. Upfront cost was \$500 with a monthly lease of \$100. 25 year lease then can purchase array for \$1. (Note: not all states have leasing options.)