

2013 Annual Report





Contents

- 1** Message from Linda Valentine and Matthew Schramm
- 2** Message from Roger Dermody
- 3** Mission Highlights
- 4** Compassion, Peace, and Justice
- 6** Evangelism and Church Growth
- 8** Racial Ethnic & Women's Ministries / Presbyterian Women
- 10** Theology, Worship, and Education
- 12** World Mission
- 14** Funds Development
- 16** Supporting the Ministry of the Presbyterian Mission Agency
- 18** Presbyterian Mission Agency Organizational Chart
- 19** Presbyterian Mission Agency Board Members
- 21** Overview of General Assembly Agencies
- 23** Financial Information

On the cover: Austin College students on spring break doing tornado-relief work in Ashville, Alabama | Photo courtesy of Austin College Service Station
Left: Young Adult Volunteer Catherine Freeland in Vihiga County, Kenya | Photo by Valentine Chabuga



Message from Linda Valentine and Matthew Schramm

Therefore, since we are surrounded by so great a cloud of witnesses, let us also lay aside every weight and the sin that clings so closely, and let us run with perseverance the race that is set before us, looking to Jesus the pioneer and perfecter of our faith.
—Hebrews 12:1–2a

For over 200 years, Presbyterians have been running the race of faith, taking the gospel into all the world and bearing witness to Christ's saving love.

Over the past few years—as the Presbyterian Mission Agency has moved from doing mission on the church's behalf to inspiring, equipping, and connecting the church for ministry—our new role has been welcomed with enthusiasm and excitement.

Because our forebears call us to continue to run the race of faith, we do so by cultivating and nurturing diverse, transformational leaders for Christ's mission. Our racial-ethnic leadership institutes have already led to new opportunities for women and people of color. We also join with young adults in the reformation of the church by providing greater opportunities for service and expanding our national and international Young Adult Volunteer sites.

Through grants and coaching, and events to inspire leaders, more than 220 new worshiping communities have been launched as part of the 1001 New Worshiping Communities movement endorsed by the General Assembly in 2012. Half of these are predominantly racial-ethnic or multicultural, and a third consist primarily of young adults.

We are called to ministries of compassionate and prophetic discipleship. Our Office of Public Witness and the Presbyterian Ministry at the United Nations have been providing leadership that has inspired Presbyterians to advocate for peace in the name of Jesus Christ. In September, when we encouraged and equipped Presbyterians to urge the US government not to take military action in Syria, over 7,000 people contacted their representatives within three days.

We support and respond to the General Assembly through a variety of initiatives. In one, congregations joined with us and the Presbyterian Foundation to contribute to livelihoods in Palestine through investments in education and microfinance.

We believe that these pages—which illustrate hopeful progress amid often unsettling and painful circumstances—provide ample proof that the race is not over!

Linda B. Valentine

Linda B. Valentine, Executive Director
Presbyterian Mission Agency

Matthew Schramm, Board Chair
Presbyterian Mission Agency



Message from Roger Dermody



Therefore, my beloved, be steadfast, immovable, always excelling in the work of the Lord, because you know that in the Lord your labor is not in vain.

—1 Corinthians 15:58

The Presbyterian Church (U.S.A.) has gone through sweeping changes over these past few years. But one thing has not changed: the awesomeness of God and God’s work within and through the Presbyterian Mission Agency.

While our church is ever evolving, the commitment of employees of this agency is unwavering. Daily we apply our talents to inspire, equip, and connect Presbyterian congregations around the world to show God’s love. Our work is possible only with the support we receive from you, our partners in ministry and mission. Every agency effort to equip and nurture followers of Christ to live out mission by sharing faith and doing justice is our mutual work.

Presbyterians have always engaged institutions and structures so that they might better reflect God’s kingdom come “on earth as it is in heaven.” Consistently we speak and act out the truth of the good news for all people—particularly for the poor, the oppressed, the widow, the orphan, the alien, and the stranger.

This telling *and* showing is the core of all the mission agency’s work. Presbyterian mission means going into local gun shops and the halls of Congress to advocate for an end to gun violence. It means supporting new leaders who feel called to be a part of the 1001 movement. It means responding to national and international disasters. And it means providing resources to churches and individuals to help them proclaim and live out the gospel.

But the list certainly doesn’t end there. In the pages ahead, you will read firsthand accounts from individuals across the world who have been impacted by the manifold work of the Presbyterian Mission Agency. Through the grace of God, and with the support of individuals like you, we continue to engage the whole church for mission, as together we strive to be steadfast, immovable, and always excelling in the work of the Lord.

Roger Dermody, Deputy Executive Director for Mission
Presbyterian Mission Agency

Mission Highlights

Guided by the policies of PC(USA) General Assemblies, the Presbyterian Ministry at the United Nations helps bring the voices of the church and its global partners to the UN community. This ministry supports Presbyterians as we advocate for justice for women and an end to the use of child soldiers and all forms of human trafficking. We also inspire young adults to serve in the public arena and offer seminars and educational events. These are but a few ways we help prepare Presbyterians to bear witness as disciples of Jesus across the globe and to advocate for peace and justice in the UN community.



Mark Koenig, Director
Presbyterian Ministry at the United Nations | presbyterianmission.org/un

Everyday, Presbyterians work toward interfaith harmony by meeting human needs, working for social justice, participating in mission and evangelism, pursuing peace, strengthening families, educating for greater understanding, nurturing diverse communities, valuing hospitality in congregations, and promoting respect in the workplace. Our Interfaith Relations ministry accompanies Presbyterians as they build and sustain creative and cooperative partnerships with people and communities of different cultural and religious traditions in these spheres of life. We especially seek to affirm, support, guide, and equip Presbyterians committed to cultivating interfaith partnerships for the common good. Our goal is to encourage interreligious relationships as a valuable part of our Christian witness in a shared world.



Christine Hong, Associate for Theology, Interfaith Relations
Theology, Worship, and Education | presbyterianmission.org/interfaith

The Young Adult Volunteer program invites people from 19 to 30 to engage in a year of service with the Presbyterian Church (U.S.A.) at sites throughout the United States and around the world. Participants work with partner organizations in positions that promote social justice, education, advocacy, community development, or faith-related service. YAVs live in intentional Christian communities, discerning their own vocation, touching lives, and spreading the love of Christ around them. The YAV program is growing—with six new sites for 2014—and attracts more participants each year. YAVs consistently tell us that the program is challenging, exhilarating, and life-changing—exactly what we hope for the entire PC(USA).



Richard Williams, Coordinator, Young Adult Volunteer Program
Presbyterian World Mission | presbyterianmission.org/yav

Equipping a multigenerational church to engage and join with young adults for Christ’s mission is the focus of the Young Adult Catalyst office. We connect young adults and those who work with them to Presbyterian Mission Agency ministries that touch young adults’ lives. We do this by facilitating the young adult ministries team, nurturing relationships, supporting multiministry initiatives, and speaking with churches, mid councils, and conferences about young adults and the ministries that exist to support them. We also listen intently to young adults in order to learn from them, and serve as a resource to help them put their faith into action.



Rob Fohr, Young Adult Catalyst
Presbyterian Mission Agency | WhatsNextWhatsNow.org



John Moore / Getty Images

Trigger turns the tide in gun-violence conversation

By Mary Ann Pedde, member of the Justice Committee, First Presbyterian Church, Iowa City

Reducing gun violence is admittedly a politically divisive and difficult issue with no easy answers or quick fixes. But can those who live in a country where someone dies by gunfire every 17 minutes afford to sit by idly?

After our church's Justice Committee viewed the documentary *Trigger: The Ripple Effect of Gun Violence*, a collaborative effort of Presbyterian Disaster Assistance, the Presbyterian Peacemaking Program, and the Office of Public Witness, we realized we had to act. As a way of fostering common ground on reducing gun violence, we decided to give our community a chance to see the film.

So we formed the group Ripples to Waves (ripples2waves.org), bringing together business representatives and friends from different backgrounds, life experiences, faith traditions, and political perspectives, and organized a large community event around *Trigger*. Participants have been able to see the real issues, identify areas of agreement and disagreement, and decide on ways to move forward together to reduce gun violence.

Thanks to *Trigger* and the Presbyterian Mission Agency ministries behind it, the tide of conversation about gun violence is turning in Iowa City.

Memorial for Christina Taylor Green, who was killed in the 2011 Tucson shooting

Sara Lisherness, Director



The ministries of Compassion, Peace, and Justice work to inspire, equip, and connect Presbyterians and ecumenical partners around the world to

- rebuild communities devastated by a natural or human-caused disaster;
- promote peace and resolution of conflict;
- educate and equip individuals and congregations to address the issues that perpetuate hunger;
- speak truth in love to power;
- help people help themselves;
- advocate for justice, freedom, and human fulfillment in the local, national, and international arena; and
- follow Christ to the ends of the earth.

Together, we are responding to God's call through the prophet Isaiah to be repairers of the breach, restorers of the streets to live in—truly making God's community livable for all.

Ministries of Compassion, Peace, and Justice

The Advisory Committee on Social Witness Policy
Child Advocacy
James N. Jarvie Commonweal Service
Mission Responsibility through Investment
Presbyterian Disaster Assistance
Presbyterian Health, Education, and Welfare Association
Presbyterian Hunger Program
Presbyterian Ministry at the United Nations
Presbyterian Office of Public Witness
Presbyterian Peacemaking Program
Self-Development of People

Working together to end violence in Syria

By Mary Mikhael, National Evangelical Synod of Syria and Lebanon

Day by day, the number of Syrians in need increases. Those in camps, mainly in neighboring countries, live under very difficult circumstances. When I see children in shacks and tents, misery on their faces, my heart breaks. The tragedy in Syria, and of those made refugees, is beyond description.



Douglas Dicks

Work with us for an end to the violence in Syria. Syria deserves life. That is what we wish for everybody, to live in peace and human dignity. Great help has come to Syrians from the Presbyterian Mission Agency—through the work of Presbyterian Disaster Assistance (PDA), the Presbyterian Ministry at the United Nations, and the Office of Public Witness. PDA and its partners continue to provide food, hygiene kits, bedding, and support to health workers and to help students continue their education, while the Office of Public Witness and the Ministry at the United Nations work to facilitate dialogues promoting peace. Thank you for all your support of the National Evangelical Synod of Syria and Lebanon and what you have been doing and continue to do for peace in Syria.

Syrian refugees at the Zaatari camp in Jordan

Evangelism and Church Growth

Ministry in an RV park

By Tamara John, Organizing Pastor, Hope for Life Chapel, Huntington Beach, California

I live in a fifth-wheel RV trailer with a chapel in the back, home to a new worshiping community with a mission to reach unloved and desperate people for Jesus.

The folks I minister with are facing money trouble, divorce, addictions, job loss, and home foreclosure. Many are dealing with shame, guilt, and despair and are ready to give up on God.

But gradually we are together learning to trust again—as Jesus makes us new, with all the old gone.

I thank God for the Presbyterian Mission Agency and its vision for 1,001 new worshiping communities in the Presbyterian Church (U.S.A.). Supporting and encouraging innovative leaders to make new disciples broadens the church's relevance in ways that are imperative in today's world.

Through Presbyterian Mission, and with the support of the Presbytery of Los Ranchos and my steering committee of elders and pastors in local churches, God continues to make this RV ministry possible.

Tamara John's RV-park new worshiping community brings the love of Jesus to folks who have "given up on God."

Courtesy of Hope for Life Chapel

Eric Hoey, Director



Evangelism and Church Growth ministries partners with congregations and mid councils to help fulfill God's redemptive plan for the church through faith in Jesus Christ.

By igniting a passion for Jesus and inspiring communities of faith to do church in new ways, the Holy Spirit is at work—making new disciples and transforming leaders for 21st-century ministry in the Presbyterian Church (U.S.A.).

Together, we are learning how to

- **go** beyond the walls of churches;
- **disciple**—learning what it means to be in relationship with God and each other; and
- **live**—practicing all that Jesus commanded and living life to the fullest, as God intended.

Evangelism Ministries

Evangelism/Engage
Collegiate Ministries
Camps and Conference Centers
Ministries with Youth
Presbyterian Military Chaplains

Church Growth Ministries

1001 New Worshiping Communities
Presbyterian Centers for New Church Innovation
Congregational Transformation / New Beginnings
Mission Program Grants
Older Adult Ministries



Courtesy of Light of Hope Presbyterian Church

Engaging in new life

By Edwin Gonzalez-Gertz, Pastor, Light of Hope Presbyterian Church, Marietta, Georgia

Thanks in part to the *Engage* resource from the Evangelism office of the Presbyterian Mission Agency, new life is springing up in the congregation I serve in Cobb County, Georgia.

Three churches located within six miles of each other decided to merge so that we could better use our resources to serve our diverse neighborhood—but we needed help.

At our adult vacation Bible school, Evangelism coordinator Ray Jones took us through part one of the curriculum, *Engage: Gospel*. We began to share and see how our personal stories of faith were connected to Scripture. We felt the Holy Spirit leading us. We became less afraid of change.

After baptizing Max, a local man without a home, members told me it was the most amazing thing they'd ever witnessed—truly life transforming. We thank God for Evangelism and Church Growth ministries partnering with us in our journey to better engage our neighborhood.

Thanks to the Evangelism resource Engage, three congregations learned how to become one to better serve their diverse neighborhood.

Racial Ethnic & Women's Ministries / Presbyterian Women

Finding a home away from home

By Johnson Kimúhu, Pastor, Church of Amazing Grace, Santa Ana, California

Finding a place to call home, a sense of belonging, is hard for new immigrants. Our church, Kanitha Wa Utugi Wa Magegania (Church of Amazing Grace), is a new worshiping community in Santa Ana, California, responding to the needs of Kenyan immigrants working to find their way. Racial Ethnic & Women's Ministries has provided grants and leadership-development

opportunities so that we can do evangelism and reach out to the community. In three years our church has grown from 30 to more than 100 worshipers! I feel a great sense of joy when I see the Kenyan women, men, and youth praising God in their own language (Gikuyu) and worshiping in ways unique to their community.

Johnson Kimúhu leading worship with women of the Church of Amazing Grace in Los Ranchos Presbytery



Luis Esparza

Rhashell Hunter, Director



Racial Ethnic & Women's Ministries / Presbyterian Women "abounds in hope" (Rom. 5:13) as it helps the church live out its call to be a more inclusive and diverse community. We empower racial ethnic, new-immigrant, and women leaders through training, coaching, leadership institutes, and networking and by providing grants to racial ethnic schools and colleges and racial ethnic and immigrant leaders. The newest growth in the church is among immigrants and certain racial ethnic communities. Racial Ethnic & Women's Ministries assists congregations and mid councils in their efforts to become more cross-cultural. And Presbyterian Women in the PC(USA) abounds in hope as it builds a caring community of women committed to strengthening the PC(USA).

Historically Racial Ethnic Congregational Support Offices

African American Congregational Support
Asian Congregational Support
Hispanic Latino-a Congregational Support, including Portuguese-Language Congregational Support
Native American Congregational Support

New Immigrants and Emerging Communities Offices

African Emerging Ministries
Korean Emerging Ministries, including Korean English Ministries
New Immigrants and Emerging Ministries, including Middle Eastern Ministries

Cross-Cultural and Multicultural Ministries Offices

Cross-Cultural Ministries
Multicultural Congregational Support

Racial Ethnic Leadership Development

Racial Ethnic Leadership Development
Racial Ethnic Schools and Colleges

Women's Leadership Development and Justice Ministries

Gender and Racial Justice
Women's Leadership Development and Young Women's Ministries

Presbyterian Women, Inc.

Learning from each other

By Loc Dai Nguyen, Minister of English Ministries, Vietnamese United Mission, Charlotte, North Carolina

Becoming a leader requires knowledge, connections, and relationships—exactly what the leadership institutes of Racial Ethnic & Women's Ministries provide. I had the opportunity to attend an institute for young adult new immigrants and gained a clear vision of the bigger picture of the Presbyterian Church (U.S.A). I met passionate leaders facing ministry challenges similar to



Presbyterian Mission Agency

my own who helped me see that they can be overcome. What a blessing it was to participate in this leadership institute—to gain new skills, learn from other leaders, and simply be with so many other young persons eager to serve the church.

Loc Dai Nguyen at the Young Adult New Immigrant Leadership Institute

Small churches equipped for ministry

By Paul Snyder, Pastor, Wilton First and Glencoe Sloan Memorial Presbyterian churches, North Dakota



I always knew I'd be a pastor of a rural church. When I read about the need of two North Dakota churches through the Small Church Residency Program (formerly, For Such a Time As This) of the office of Theology and Worship, I sensed I was exactly what they were seeking.

These churches had been without a full-time pastor for decades. Some of the members say they were at a do-or-die moment, but the program is allowing the churches to experience growth. Without the program, these

churches couldn't afford a full-time pastor. It has been a huge blessing! And its support group really helps in this growing process. Listening to other pastors makes me feel supported.

I am thrilled to be a part of this program and these two churches and look forward to our future of ministry together.

Paul Snyder stands at the door of First Presbyterian Church in Wilton, North Dakota, one of two churches he serves.

Charles B. "Chip" Hardwick, Director



The Theology, Worship, and Education ministry area encourages Presbyterians to think, pray, and live the faith by giving sustained attention to the grace of the Lord Jesus Christ, the love of God, and the communion of the Holy Spirit. Specifically, we inspire, equip, and engage the church for mission by providing Christian-education and discipleship materials, worship resources, leadership-development programs, and theological studies. We carry out this work through Congregational Ministries Publishing, the office of Theological Education, and the office of Theology and Worship. Our varied ministries—each animated by the conviction that what we believe shapes how we pray and how we pray shapes how we live—prepare clergy and all Christians to wrestle with issues of theology, discipleship, and worship.

Congregational Ministries Publishing

Feasting on the Word ecumenical curriculum for all ages
Being Reformed series for adult Sunday school and small groups
We Believe denominational curriculum for children
Korean, Spanish, and Braille language resources

Theological Education

Committee on Theological Education
Seminary Support Network
Theological Education Fund

Theology and Worship

Company of New Pastors
Interfaith Relations
Financial Aid for Service
Small Church Residency Program
Worship resources, including the *Call to Worship* journal

Total curriculum transforms Sunday mornings

By M. B. McCandless, Ministry Coordinator for Families, First Presbyterian Church, Elizabethtown, Kentucky

Our Sunday mornings have been transformed by the *Feasting on the Word* curriculum produced by Congregational Ministries Publishing! Focusing on one Sunday lectionary text for church school and worship has changed the way children, youth, parents, and grandparents interact—both before and after their time at church.

As a small, ever-changing, and growing congregation, we have found the 12-month Total Church Plan to be a cost-effective way to purchase resources for education and worship planning. It's all there! By having ready access to every age group, we can adapt the classes (midseason, if necessary) to suit the children and youth who actually attend.

Children's Sunday school at First Presbyterian Church in Elizabethtown, Kentucky





Cindy Corell

At home in Haiti

By Cassandra Nelson, Haitian ecovillage resident and mother of three, as told to mission coworker Cindy Corell

On January 12, 2010, when the earthquake struck Haiti, I lived in Croix-des-Bouquets, close to Port-au-Prince, with my one-year-old son, Jean Gerry, and his father. I ran for shelter with my son. I was also pregnant and already in labor. Someone found a tent for me, and, at eight o'clock that evening, Veronica Jean was born.

I kept hearing people say: "Hinche. Hinche. There are places to live in Hinche." So I went. A woman helped me to find a tent to live in. Then she told me about the ecovillages.

I moved into our house in an ecovillage built by Presbyterian Disaster Assistance and supported by

Presbyterian World Mission on September 24, 2013. I am very happy here. Port-au-Prince is not a good place to be.

I am working very hard to tend my garden and to keep my oldest son in school.

I want to say thank you very much to all the people who made this place possible for our family. I especially thank the mission coworkers from Presbyterian World Mission, who bring visitors to spend time with us and encourage us.

Cassandra Nelson with her children: Jean Gerry, five; Veronica Jean, four; and Schneider, two. They live in the second Haitian ecovillage, near Papaye, built with funds from Presbyterian Disaster Assistance.

Hunter Farrell, Director



The gospel invites us to share God's love through word and deed, and Presbyterian World Mission has been doing that successfully for over 177 years in more than 50 countries. It is an exciting ministry and one that invites God's people into rich mission locally, nationally, and globally.

More than 94 million Christians around the world now belong to churches that were founded or cofounded by Presbyterian Church (U.S.A.) mission workers. Our global church partners are equally engaged in sharing our faith and working to eliminate such critical social ills as poverty and violence. Over the years, Presbyterian missionaries have given birth to churches, built hospitals, and started schools on every continent. In 2013, Presbyterian World Mission identified three critical global initiatives—poverty, evangelism, and reconciliation—to engage Presbyterians around the world.

Mission Personnel

Recruitment and relations

Area Offices

Africa
Asia and the Pacific
Latin America and the Caribbean
Middle East, Central Asia, and Europe
Jinishian Memorial Program

Equipping for Mission Involvement

Resources for congregations
Connecting with mission workers

Young Adult Volunteers



Dave Herman

Bridging cultures with baskets

By Marsha Anson, Executive Presbyter, Glacier Presbytery, Montana | Member, Presbyterian Mission Agency Board

Supporting mission can be a simple act. Our presbytery, Glacier Presbytery in northwestern Montana, bought baskets from Roma women in Russia through Rachel Yates, church support associate for World Mission.

The baskets have become a meaningful and tangible way for us to connect to the plight of Roma women, who are often subject to discrimination and abuse and have little access to education. The women are able to make a living from creating baskets.

Nearly every church in our presbytery has found a way to use the beautiful handmade baskets, whether it's collecting the offering, holding prayer cards, or distributing Communion. Some of the congregations in our presbytery are small, with as few as 12 active members, so the baskets are a realistic gesture of support for mission.

Congregations now feel connected both to the women who made the baskets and to World Mission's ministry with the Roma people. Our hope is to extend support to other areas of mission in the future.

First Presbyterian Church in Great Falls, Montana, uses the baskets from the Roma women for Communion.

Funds Development



Terri Bate
Senior Director

The late Henri Nouwen, one of the 20th century's most revered writers on spirituality, called fundraising "a way of announcing our vision and inviting other people to join our mission." Through our Funds Development ministry, we

invite Presbyterians to participate in the work of the Presbyterian Mission Agency.

All of the wonderful ministries highlighted in these pages could not exist without the financial support of Presbyterians. Through their congregations, mid councils, and mission agency, Presbyterians form a communion of generosity that is changing lives in the name of Jesus Christ.

When the Presbyterian Mission Agency invites Presbyterians to give, we are calling on them to engage in ministries that bear witness to the gospel in word and deed. Through congregational basic mission support, special offerings, and other giving opportunities, Presbyterians are striving together to extend the reign of God.

May we continue to pray, give, and work together toward the full realization of Christ's vision for our world.

"In the same way, let your light shine before others, so that they may see your good works and give glory to your Father in heaven." —Matthew 5:16

Mission coworkers Jacob and Aliamma George serve in Malakal, South Sudan, where they teach at the Giffen Institute of Theology and serve in a Community Health Evangelism ministry.



Courtesy of Jacob and Aliamma George

Giving Catalog connects Presbyterians with the impact of their gifts

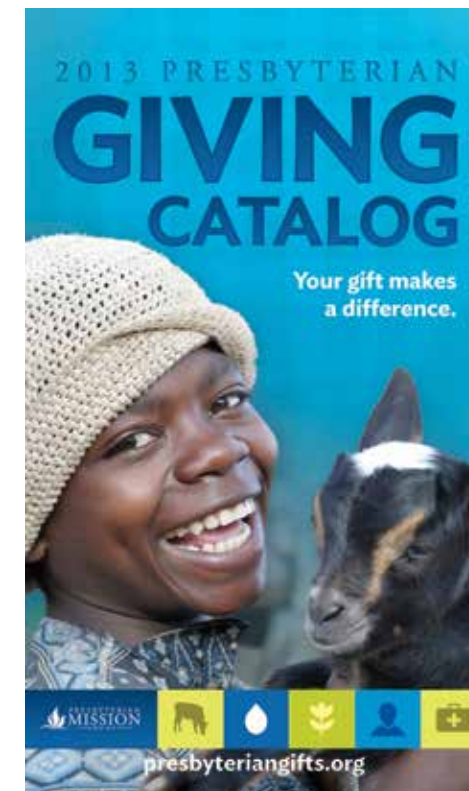
"Remember the words of the Lord Jesus, . . . 'It is more blessed to give than to receive.'" —Acts 20:35

Last year's inaugural Presbyterian Giving Catalog offered tangible examples of the many ways Presbyterian generosity makes an impact around the world. With such examples as goats, chicks, or new wells providing clean drinking water, the catalog helped Presbyterians connect their giving with its vital daily benefits to families and communities.

The catalog's collection exemplifies the work carried out by Presbyterian Mission Agency ministries supported by the PC (USA)'s four churchwide special offerings.

Through these special offerings, Presbyterians are addressing the needs of our sisters and brothers around the world.

Whether by helping a community recover in the wake of a disaster, assisting a pastor's family in a time of crisis, or making peace in classrooms through initiatives to prevent bullying, gifts to the special offerings continue to be a strong catalyst for positive transformation in the lives of others and serve as a visible witness to the gospel of Jesus Christ.



2013 Presbyterian Giving Catalog

WATER

GARDEN WELL
\$50/share
\$1,250/well
A well provides clean water for drinking, bathing, and irrigation to an entire community. Change the lives of countless people by giving them a reliable and clean source of water. Donate the cost of an entire well purchase a share. **Item OG10008**

PRESBYTERIAN YOUTH TRIENNIUM GLOBAL PARTNERS \$300
The Presbyterian Youth Triennium (PYT) unites thousands of youth from across the globe every three years for worship, prayer, play, and community. Our global participants can be hampered by travel expenses like visa fees. Your support could be the key piece that allows a hopeful global partner to participate. **Item PO20001**

PRESBYTERIAN YOUTH TRIENNIUM REGISTRATION \$475
Covering the PYT registration fee for a Presbyterian youth could provide an opportunity for a life-changing experience. Invest in the spiritual growth of a young follower of Christ through your gift. **Item PO20002**

give online | presbyteriangifts.org

4 Your gift makes a difference. 11

Shared Services: supporting the ministry of the Presbyterian Mission Agency



Earline Williams
Deputy Executive
Director

Now all glory to God, who is able, through his mighty power at work within us, to accomplish infinitely more than we might ask or think.
—Ephesians 3:20 (NLT)

The Shared Services team is committed to providing essential behind-the-scenes support to those called to serve the church at the Presbyterian Center in Louisville and around the world. The apostle Paul reminds the church that “God is able to provide you with every blessing in abundance, so that by always having enough of everything, you may share abundantly in every good work” (2 Cor. 9:8). As stewards of the Lord’s abundant blessings, Shared Services follows a deliverables model based on excellence in our responsibilities of financial services, printing, mailing, information technology, logistics, and work environment.

On the following page, you will read about the celebrations at Big Tent 2013. But what is not included in that narrative is information on the 2,500 accounting entries, the registration of 1,500 attendees, or the logistics of transporting the agency’s exhibits to and from the convention center, support services critical to the event’s success. These are some of the many ways Shared Services undergirds the work of the Presbyterian Mission Agency. We are honored to serve the church by supporting our peers engaged in the ministries to which God has called this agency that are highlighted throughout this report.



Randy Hobson



Randy Hobson

Big Celebrations

2013 was a year of big celebrations for the church! More than 1,500 people from across the country gathered in Louisville for Big Tent, which concluded with a community-wide street party outside the Presbyterian Center to celebrate two historic milestones: the 30th anniversary of the reunion that formed the Presbyterian Church (U.S.A.) and the church’s 25th year in Louisville. Young and old alike came together to learn and worship, and all left renewed and with a deep sense of community from having been among their family in faith.



Randy Hobson

Another Presbyterian family gathering took place last summer at Purdue University in West Lafayette, Indiana, where more than 5,000 youth made their way to participate in the five-day Presbyterian Youth Triennium. The “I AM” conference theme allowed young people to experience the deep connection between the divine “I AM” and the human “I am” as they explored their sense of God and self in today’s world.



David Young

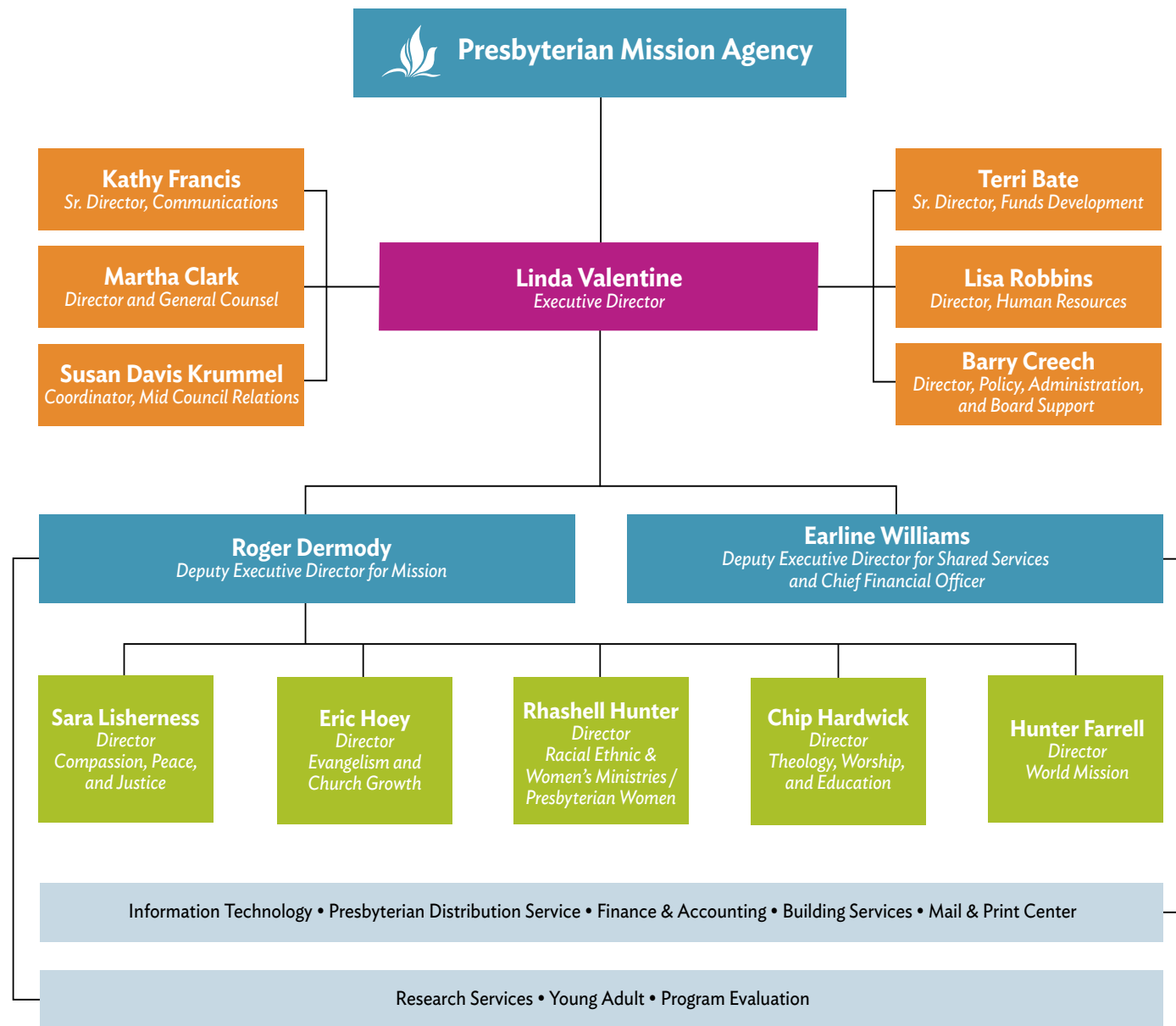


Randy Hobson

Big Tent and Youth Triennium celebrations, worship, and street party



Presbyterian Mission Agency Organizational Chart



Presbyterian Mission Agency Board Members

As of January 31, 2014

Matthew W. Schramm, Chair
Arthur W. Canada, Vice Chair
Neal D. Presa, Moderator of the 220th General Assembly (2012)

Executive Committee
 Steven J. Aeschbacher
 Arthur W. Canada (vc)
 William W. Capel
 Rachel "Mihee" Kim-Kort
 Cathryn C. Piekarski
 Heath K. Rada
 Noelle Royer
 Matthew W. Schramm (c)
 Joyce A. Smith
 Linda B. Valentine (ex officio)

Finance Committee
 Clarence Antioquia
 Mary C. Baskin
 William W. Capel (c)
 Clark D. Cowden
 Thomas O. Fleming Jr.
 Chad A. Herring
 Jack D. Hodges
 Jack D. Shelver (at large)
 Josephene D. Stewart (vc)
 Wendy S. Tajima
 Kathryn Trott (at large)

Justice Committee
 Melissa L. DeRosia
 James R. Ephraim Jr.
 David E. Ezekiel
 James E. Fother Jr.
 Roger J. Gench (vc)
 Mary C. Jorgenson
 Janet D. Martin
 Susan H. Osoinach
 Kears K. Pollock
 Noelle Royer (c)

(c) Chair; (vc) Vice Chair
 *New in 2014

Leadership Committee
 Cruz A. Negron Torres (vc)
 Cathryn C. Piekarski
 Nancy J. Ramsay
 Joyce A. Smith (c)
 Glen E. Snider
 Bruce G. Stevens
 Kevin R. Yoho

Worshiping Communities Committee
 Steven J. Aeschbacher
 Marsha Zell Anson
 Andrew N. Barron
 Marilyn S. Gamm (vc)
 Vicki T. Garber
 Rachel "Mihee" Kim-Kort (c)
 Heath K. Rada
 Marianne O. Rhebergen
 David W. Shinn
 Charles Arlin Talley

Audit Committee
 Mary C. Baskin (c)
 Ellen P. Cason (at large)
 Thomas O. Fleming Jr.
 Kears K. Pollock
 Christopher E. Rhodes (COGA Rep.)
 Richard A. Turpen (at large)

Corresponding Members
 Stephen A. Bacon, Presbyterian Investment and Loan Program
 John M. Buchanan, Presbyterian Publishing Corporation
 David A. Davis, Presbyterian Foundation
 James L. Hudson, Presbyterian Investment and Loan Program
 Marc Lewis, Presbyterian Publishing Corporation
 Robert W. Maggs Jr., Board of Pensions
 Thomas C. Paisley, Board of Pensions

Gradye M. Parsons, Office of the General Assembly
 Jacob Parsons-Wells, Advocacy Committee for Women's Concerns
 Carmen M. Rosario, Advocacy Committee for Racial Ethnic Concerns
 Marcia Mount Shoop, Committee on the Office of the General Assembly (COGA)
 Thomas F. Taylor, Presbyterian Foundation
 Linda B. Valentine, Presbyterian Mission Agency
 Raafat L. Zaki, Advisory Committee on Social Witness Policy

Ex Officio
 Neal D. Presa, Moderator of the 220th General Assembly (2012)

With gratitude for their service and ministry, we acknowledge the following board members who also served in 2013:

Jan Dowlearn
 Jung Nam Lee



2013 Presbyterian Mission Agency Board (for a full list of board members, see p. 19)

Introduction to Financial Data

In 2013, about \$80 million was generated for mission and ministry under the stewardship of the Presbyterian Mission Agency.

For the past decade, both restricted and unrestricted receipts have continued a downward trend. In response to these trends, the Presbyterian Mission Agency has reduced or reconfigured staff and programs to closely match expenses with available revenue and is undertaking increased funds-development efforts.

The charts and graphs on the pages that follow provide greater detail about the sources and uses of funds for each ministry area. This information is provided as part of our commitment to be accountable, transparent, and responsible stewards of the funds entrusted to us for the mission and ministry work of the whole church.

The Stewardship of Mission Funds

According to our audited 2013 financial statements, the Presbyterian Mission Agency's operating expenses by functional classification for 2013 are as follows:

Program expenses	90%
Management and general expenses	6%
Fundraising expenses	4%
Total	100%

Independent Auditor's Opinion

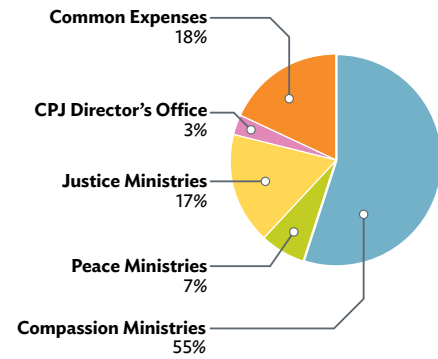
The full set of audited financial statements and notes is available at our website, pcusa.org/financials. Crowe Horwath LLP has expressed an unqualified opinion on the consolidated financial statements of the Presbyterian Church (U.S.A.), A Corporation, as of December 31, 2013, and for the year then ended.

John Fitzgerald

Compassion, Peace, and Justice

2013 Actual

Uses of Funds



Uses of Funds

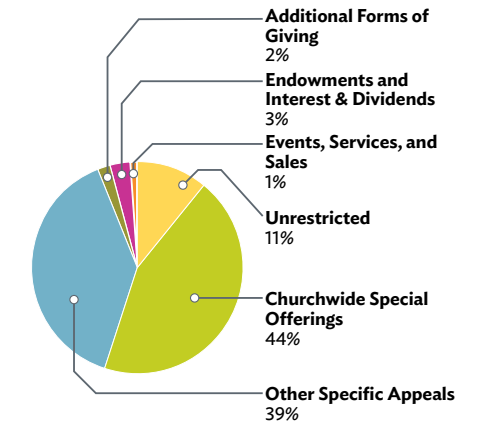
Compassion Ministries	
Peace Ministries	
Justice Ministries	
CPJ Director's Office	
Common Expenses	

Sources of Funds

(\$ Thousands)

	UNRESTRICTED	RESTRICTED				Directed Mission Support	Endowments and Interest & Dividends	Events, Services, and Sales	Total Restricted	TOTAL
		Churchwide Special Offerings	Other Specific Appeals	Additional Forms of Giving						
Compassion Ministries		3,997	5,527	301		125		9,950	9,950	
Peace Ministries	550	576	67	4		88	79	814	1,364	
Justice Ministries	421	1,886	467	14	2	239	9	2,617	3,038	
CPJ Director's Office	3	455		8		12	9	484	487	
Common Expenses	779							2,431	3,210	
	1,753	6,914	6,061	327	2	464	97	16,296	18,049	

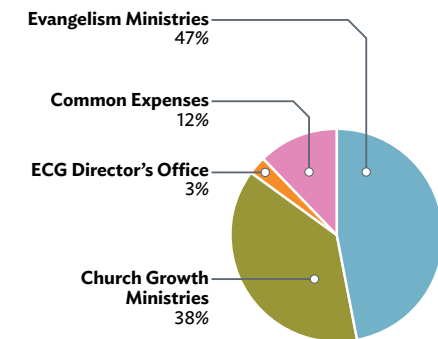
Sources of Funds



Evangelism and Church Growth

2013 Actual

Uses of Funds



Uses of Funds

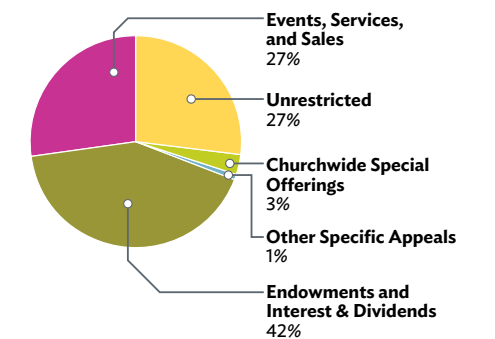
Evangelism Ministries	
Church Growth Ministries	
ECG Director's Office	
Common Expenses	

Sources of Funds

(\$ Thousands)

	UNRESTRICTED	RESTRICTED			Directed Mission Support	Endowments and Interest & Dividends	Events, Services, and Sales	Total Restricted	TOTAL
		Churchwide Special Offerings	Other Specific Appeals	Additional Forms of Giving					
Evangelism Ministries	1,142	245	2	2	2	694	1,979	2,924	4,066
Church Growth Ministries	609		53			2,480	130	2,663	3,272
ECG Director's Office	123		6		19	117	8	150	273
Common Expenses	302							732	1,034
	2,176	245	61	2	21	3,291	2,117	6,469	8,645

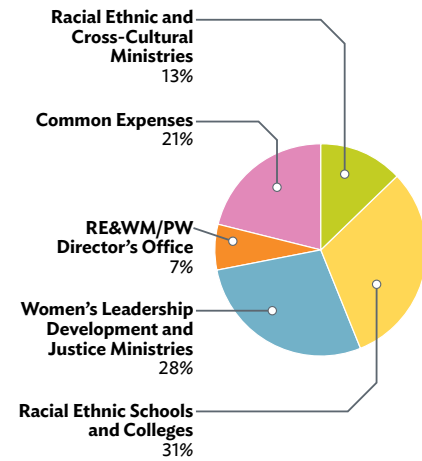
Sources of Funds



Racial Ethnic & Women's Ministries / Presbyterian Women

2013 Actual

Uses of Funds



Uses of Funds

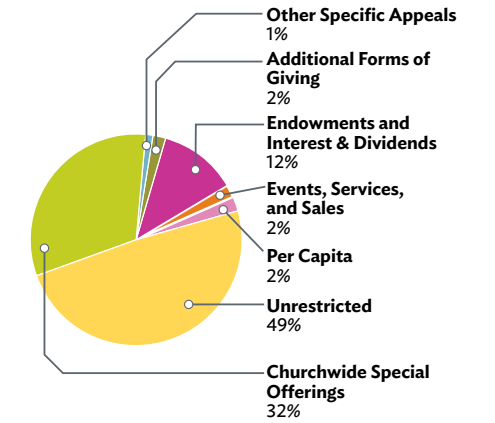
Uses of Funds	Sources of Funds			
	UNRESTRICTED	Churchwide Special Offerings	Other Specific Appeals	Additional Forms of Giving
Racial Ethnic and Cross-Cultural Ministries	513	1	10	21
Racial Ethnic Schools and Colleges		1,356	1	
Women's Leadership Development and Justice Ministries	1,039		18	86
RE&WM/PW Director's Office	214			
Common Expenses	289			
TOTAL	2,055	1,357	29	107

Sources of Funds

(\$ Thousands)

	RESTRICTED				TOTAL
	Endowments and Interest & Dividends	Events, Services, and Sales	Per Capita	Total Restricted	
	65	34		131	644
	184			1,541	1,541
	234	14		352	1,391
	24	20	75	119	333
				720	1,009
	507	68	75	2,863	4,918

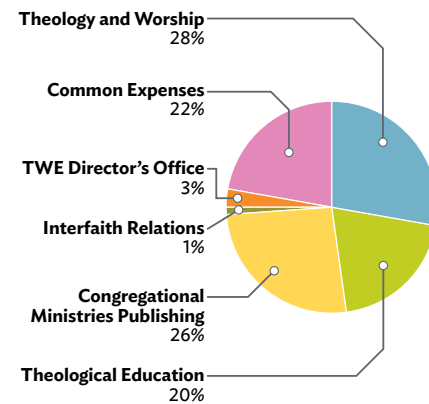
Sources of Funds



Theology, Worship, and Education

2013 Actual

Uses of Funds



Uses of Funds

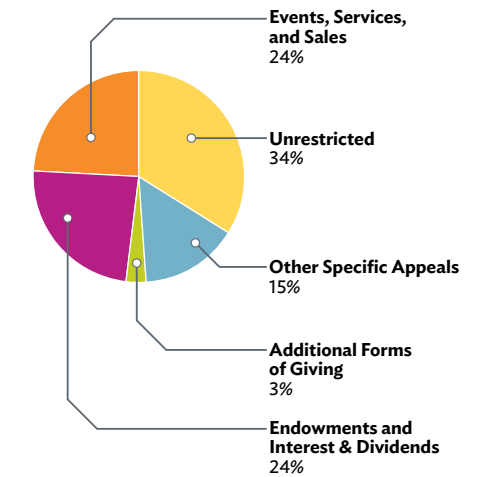
Uses of Funds	Sources of Funds			
	UNRESTRICTED	Other Specific Appeals	Additional Forms of Giving	Endowments and Interest & Dividends
Theology and Worship	667		202	1,181
Theological Education	454	994		94
Congregational Ministries Publishing	331	17		222
Interfaith Relations	16		20	63
TWE Director's Office	229			
Common Expenses	507			
TOTAL	2,204	1,011	222	1,560

Sources of Funds

(\$ Thousands)

	RESTRICTED			TOTAL
	Other	Events, Services, and Sales	Total Restricted	
	3	145	1,531	2,198
		6	1,094	1,548
		1,411	1,650	1,981
			83	99
		4	4	233
			1,182	1,689
	3	1,566	5,544	7,748

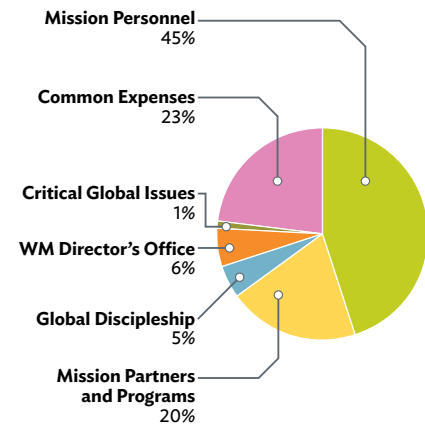
Sources of Funds



World Mission

2013 Actual

Uses of Funds



Uses of Funds

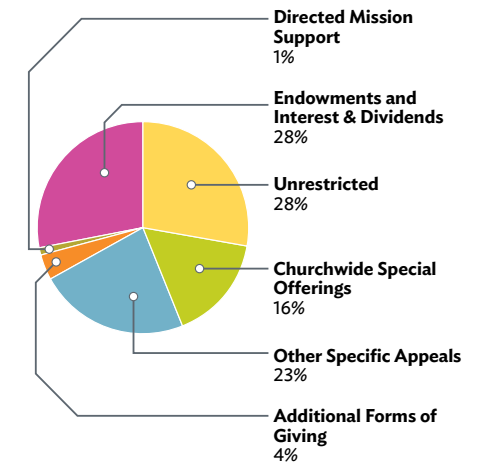
Uses of Funds	Sources of Funds			
	UNRESTRICTED	RESTRICTED	Additional Forms of Giving	TOTAL
Mission Personnel	2,136	2,988	506	5,630
Mission Partners and Programs	653	1,256	100	2,009
Global Discipleship	751	123	189	1,063
Critical Global Issues	15	103		118
WM Director's Office	646	121	39	806
Common Expenses	1,110			1,110
Total	5,311	3,111	834	9,256

Sources of Funds

(\$ Thousands)

Sources of Funds	UNRESTRICTED				RESTRICTED				TOTAL
	Directed Mission Support	Endowments and Interest & Dividends	Other	Events, Services, and Sales	Churchwide Special Offerings	Other Specific Appeals	Additional Forms of Giving	Total Restricted	
Mission Personnel	82	1,817	64	4	8,336			10,472	
Mission Partners and Programs		2,715		27	4,098			4,751	
Global Discipleship	1	57			473			1,224	
Critical Global Issues	87	180			267			282	
WM Director's Office		538		19	717			1,363	
Common Expenses					4,161			5,271	
Total	170	5,307	64	50	18,052			23,363	

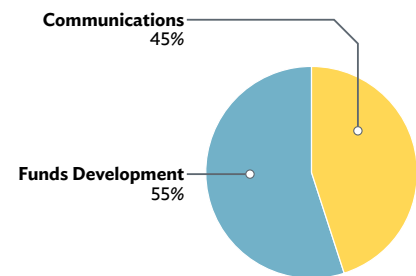
Sources of Funds



Communications and Funds Development

2013 Actual

Uses of Funds



Uses of Funds

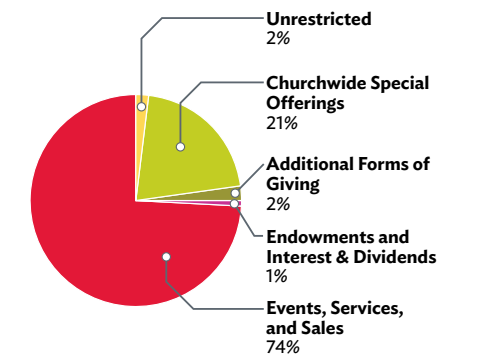
Uses of Funds	Sources of Funds			
	UNRESTRICTED	RESTRICTED	Additional Forms of Giving	TOTAL
Communications	316			316
Funds Development	301	1,450	115	1,856
Common Expenses	(482)			(482)
Total	135	1,450	115	1,834

Sources of Funds

(\$ Thousands)

Sources of Funds	UNRESTRICTED				RESTRICTED			TOTAL
	Endowments and Interest & Dividends	Events, Services, and Sales	Additional Forms of Giving	Total Restricted				
Communications		2,957		2,957			3,273	
Funds Development	47	2,093		3,719			4,020	
Common Expenses				(4,977)			(5,459)	
Total	47	5,050		1,699			1,834	

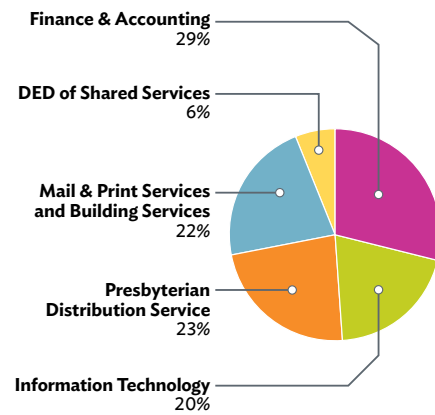
Sources of Funds



Shared Services

2013 Actual

Uses of Funds

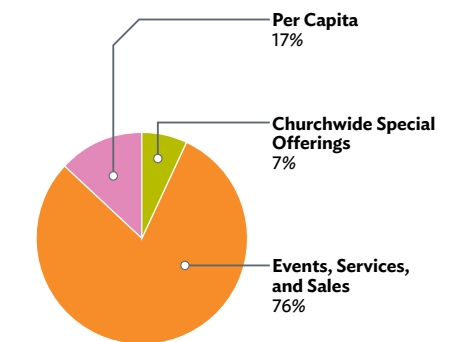


Uses of funds

Uses of funds	Sources of Funds				Total Restricted	TOTAL
	UNRESTRICTED	RESTRICTED	Churchwide Special Offerings	Events, Services, and Sales		
Finance & Accounting	537	53	1,757	279	2,089	2,626
Information Technology	851	35	862	53	950	1,801
Presbyterian Distribution Service	95	393	1,603		1,996	2,091
Mail & Print Services and Building Services	434	4	1,145	324	1,473	1,907
Deputy Executive Director's Office				519	519	519
Common Expenses	(1,917)				(3,598)	(5,515)
	0	485	5,367	1,175	3,429	3,429

(\$ Thousands)

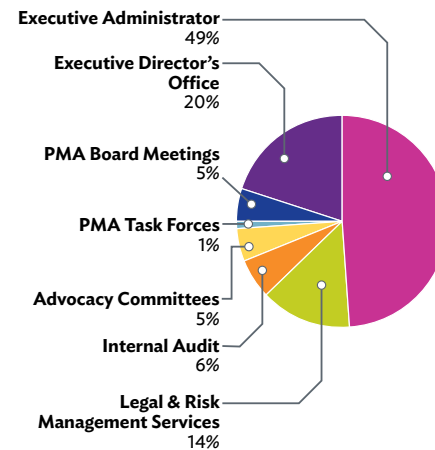
Sources of Funds



Executive Director's Office

2013 Actual

Uses of Funds

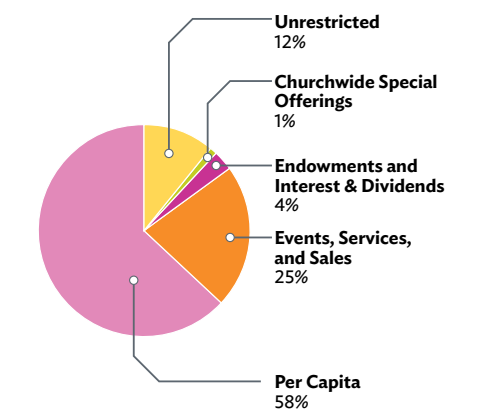


Uses of Funds

Uses of Funds	Sources of Funds				Per Capita	Total Restricted	TOTAL
	UNRESTRICTED	RESTRICTED	Churchwide Special Offerings	Endowments and Interest & Dividends			
Executive Administrator	609	28	133	862	179	1,202	1,811
Legal & Risk Management Services					499	499	499
Internal Audit					236	236	236
Advocacy Committees					172	172	172
PMA Task Forces					27	27	27
Mid Council Relations					14	14	14
PMA Board Meetings					166	166	166
Executive Director's Office					753	753	753
Common Expenses	(175)					112	(63)
	434	28	133	862	2,046	3,181	3,615

(\$ Thousands)

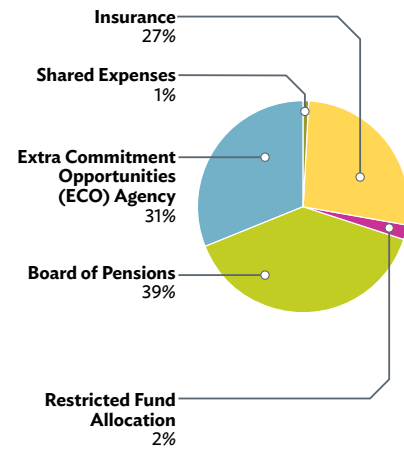
Sources of Funds



Other

2013 Actual

Uses of Funds



Uses of Funds

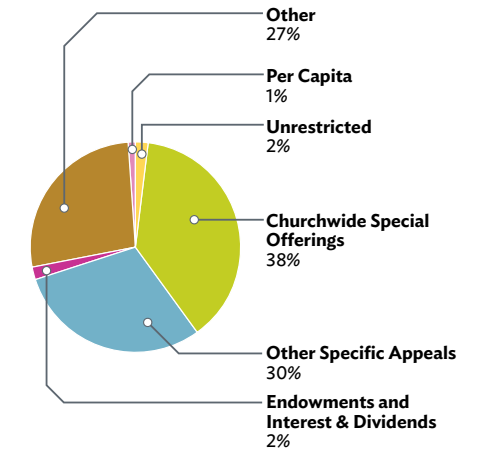
Uses of Funds	Sources of Funds			
	UNRESTRICTED	RESTRICTED		
Shared Expenses				
Insurance				
Restricted Fund Allocation				92
Board of Pensions	55	1,842		
Extra Commitment Opportunities (ECO) Agency	36		1,481	
	91	1,842	1,481	92

Sources of Funds

(\$ Thousands)

Sources of Funds	RESTRICTED			TOTAL
	Other	Per Capita	Total Restricted	
		52	52	52
	1,317		1,317	1,317
			92	92
			1,842	1,897
			1,481	1,517
	1,317	52	4,784	4,875

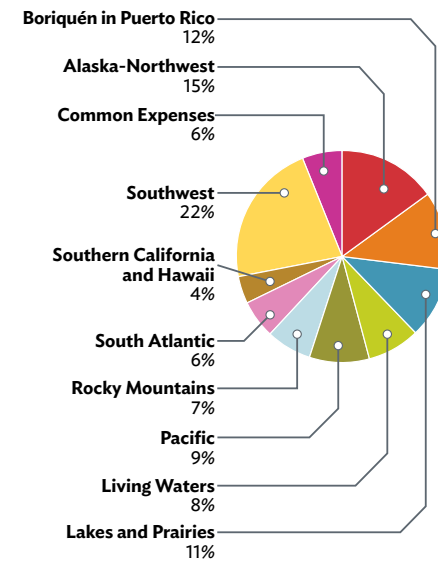
Sources of Funds



National Mission Partnership Funds

2013 Actual

Uses of Funds

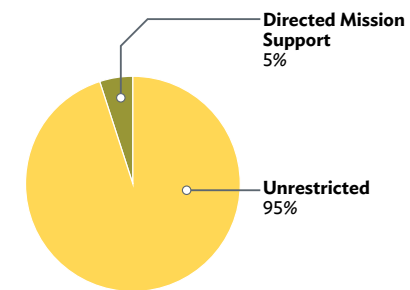


Uses of Funds

Uses of Funds	Sources of Funds (\$ Thousands)		
	UNRESTRICTED	RESTRICTED	TOTAL
Synod of Alaska-Northwest	317	5	322
Synod Boriquén in Puerto Rico	245		245
Synod of Lakes and Prairies	220		220
Synod of Living Waters	173		173
Synod of the Pacific	193		193
Synod of the Rocky Mountains	151		151
Synod of South Atlantic	133		133
Synod of Southern California and Hawaii	89		89
Synod of the Southwest	473		473
Common Expenses	34	92	126
	2,028	97	2,125

Sources of Funds (\$ Thousands)

Sources of Funds



Presbyterian Mission Agency

2013 Actual Sources of Funds

	MISSION BUDGET		Total
	Unrestricted	Restricted	
Basic Mission Support	7,087	3,696	10,783
Shared Mission Support	7,087		7,087
Directed Mission Support		3,696	3,696
Churchwide Special Offerings		12,269	12,269
Christmas Joy		3,921	3,921
One Great Hour of Sharing		6,519	6,519
Peacemaking		1,003	1,003
Pentecost		824	824
Witness		2	2
Other Specific Appeals		14,446	14,446
Emergency and Disaster Relief		5,813	5,813
Extra Commitment Opportunity (ECO)		6,536	6,536
Mission Initiative: Joining Hearts & Hands		384	384
Special Missionary Support		283	283
Hunger		367	367
Theological Education Fund		1,063	1,063
Additional Forms of Giving	675	4,124	4,799
Presbyterian Women		421	421
Bequests and Annuities	675	880	1,555
Other Gifts		2,010	2,010
Validated Mission Support		57	57
Grants from Outside Foundations		756	756
Endowments and Interest & Dividends	7,951	10,082	18,033
PC(USA) Restricted Endowment Funds		8,317	8,317
PC(USA) Unrestricted Endowment Funds	5,918		5,918
Presbyterian Mission Program Fund	9	149	158
Outside Trusts	1,415	96	1,511
Jinishian Fund		1,408	1,408
Short-Term Investments	609	112	721
Other	23	21,142	21,165
Partner Churches and Other		72	72
Enterprise Fund, Hubbard Press	15	150	165
Sales: Curriculum		2,065	2,065
Sales: Program Services		16,821	16,821
Sales: Resources	8	2,034	2,042
Total Receipts	15,736	65,761	81,497
Prior-Year Accumulations	1,152	(6,144)	(4,992)
2013 Per Capita			3,367
Total Sources of Funding	16,888	59,617	79,871

Presbyterian Mission Agency

2013 Actual Expenditures by Entity

	MISSION BUDGET		Per Capita Budget	Total
	Unrestricted	Restricted		
Executive Director's Office	434	1,135	2,046	3,615
Executive Administrator	609	1,023	179	1,811
Legal and Risk Management Services			499	499
Internal Audit			236	236
Advocacy Committees			172	172
Presbyterian Mission Agency Task Forces			27	27
Mid Council Relations			14	14
Presbyterian Mission Agency Board Meetings			166	166
Executive Director's Office			753	753
Common Expenses	(175)	112		(63)
Communications and Funds Development	135	1,699		1,834
Communications	316	2,957		3,273
Funds Development	301	3,719		4,020
Common Expenses	(482)	(4,977)		(5,459)
Mission	14,199	49,699	94	63,992
Compassion, Peace, and Justice	1,753	16,296		18,049
Evangelism and Church Growth	2,176	6,469		8,645
Racial Ethnic & Women's Ministries / PW	2,055	2,788	75	4,918
Theology, Worship, and Education	2,204	5,544		7,748
World Mission	5,311	18,052		23,363
Deputy Executive Director, Mission	699	550	19	1,268
Shared Services	0	2,254	1,175	3,429
Finance and Accounting	537	1,810	279	2,626
Information Technology	851	897	53	1,801
Presbyterian Distribution Service	95	1,996		2,091
Mail & Print Services and Building Services	434	1,149	324	1,907
Deputy Executive Director, Shared Services			519	519
Common Expenses	(1,917)	(3,598)		(5,515)
Other	91	4,732	52	4,875
Shared Expenses			52	52
Insurance		1,317		1,317
Restricted Fund Allocation		92		92
Board of Pensions	55	1,842		1,897
ECO Agency	36	1,481		1,517
National Mission Partnership Funds	2,028	97		2,125
Total Expenditures	16,888	59,617	3,367	79,871

Funding Presbyterian Mission

Mission funding comes from many sources. Gifts that support the church's work fund general and specific mission.

Unrestricted Funds

Unrestricted funds, about 19% of our funding, demonstrate our connection as Presbyterians and provide resources for the church to be a collective witness to Christ. Sources of unrestricted funds include Shared Mission Support, endowments, interest and dividends, and bequests and annuities.

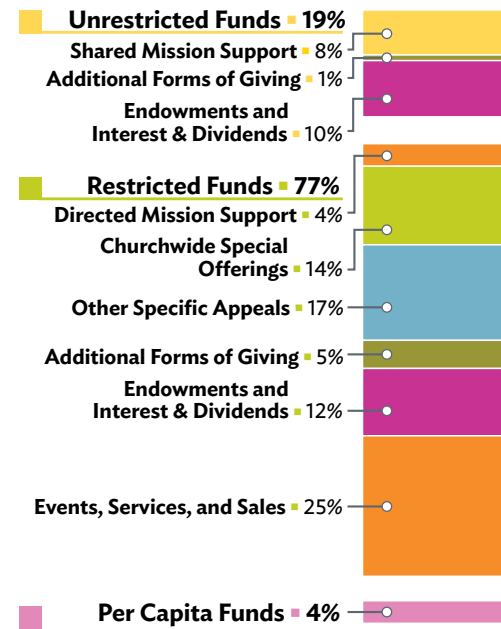
Restricted Funds

Restricted funds, about 77% of our funding, celebrate the particular commitments to mission made by members and congregations as God calls them. Sources of restricted funds include Directed Mission Support, churchwide special offerings, other specific appeals (such as those for Presbyterian Disaster Assistance and extra commitment opportunities), endowments, bequests, and sales of resources and services.

Per Capita Funds

Per capita funds, about 4% of the Presbyterian Mission Agency budget, are used for Presbyterian Mission Agency Board meetings, the Executive Director's office, and other Presbyterian Mission Agency coordination; the office of Mid Council Relations (which is shared with the Office of the General Assembly); and advocacy and advisory committees.

How Presbyterian Mission is funded



How your funds are used





Courtesy of Heartland Center

The labyrinth at Heartland Center in Missouri illuminated for evening worship

100 Witherspoon Street
Louisville, KY 40202-1396
presbyterianmission.org

PDS 15104-14-002

 [YouTube.com/presbyterianchurch](https://www.youtube.com/presbyterianchurch)

 [Facebook.com/pcusa](https://www.facebook.com/pcusa)

 [Twitter.com/presbyterian](https://www.twitter.com/presbyterian)

